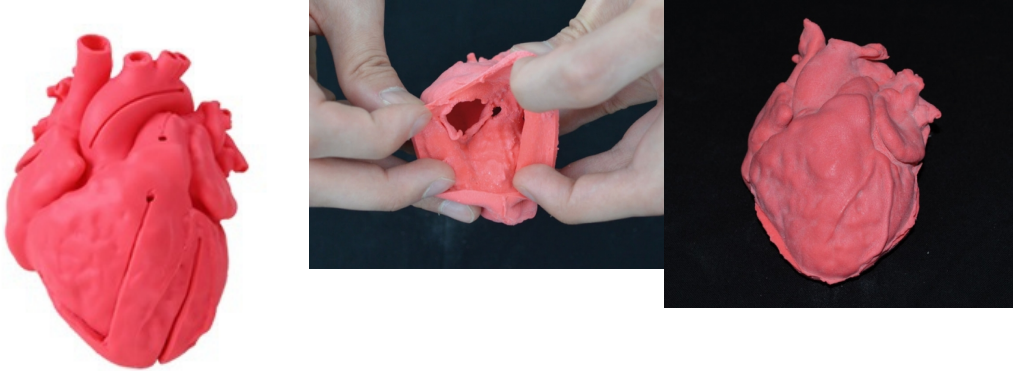


## **Pediatric heart with ventricular septal defect (VSD) G550EZ**

**Price inquiry:** +48 605999769, [kontakt@openmedis.pl](mailto:kontakt@openmedis.pl)

Product code: MA00929



The pediatric congenital heart disease model is based on actual CT data, and is a precisely produced, urethane based, soft model. This product was created with the intention of being a support tool for doctors performing treatments which require advanced skills and considerable experience. The parts listed below are reproduced along with disease specific areas: right ventricle, left ventricle, right atrium, left atrium, coronary arteries, coronary veins, aorta, superior vena cava, inferior vena cava, pulmonary vein, mitral valve, tricuspid valve, aortic valve, pulmonary valve, papillary muscle and coronary sinus.

Size: 7.4 x 7.1 x 6.6 cm