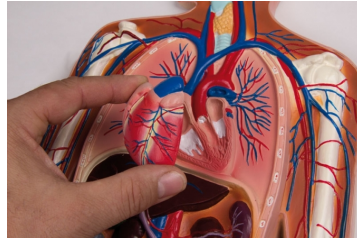


## Circulatory System, relief model, 1/2 life size

**Price inquiry:** +48 605999769, [kontakt@openmedis.pl](mailto:kontakt@openmedis.pl)

Product code: MA00927



Model of human circulatory system on base basis. Ideal for demonstrating and understanding the mechanism of blood circulation in the human body. The model clearly shows lung circulation, the heart with ventricles, arteries and valves, large vessels and blood supply to the limbs. It also contains internal organs such as the liver, kidneys, spleen and part of the intestine. The anterior wall of the heart can be removed. To locate the vessels, the model shows the skeleton, enabling understanding of the three-dimensional paths of the vessels. Also suitable for hanging.

Size: 90 x 35 x 5 cm