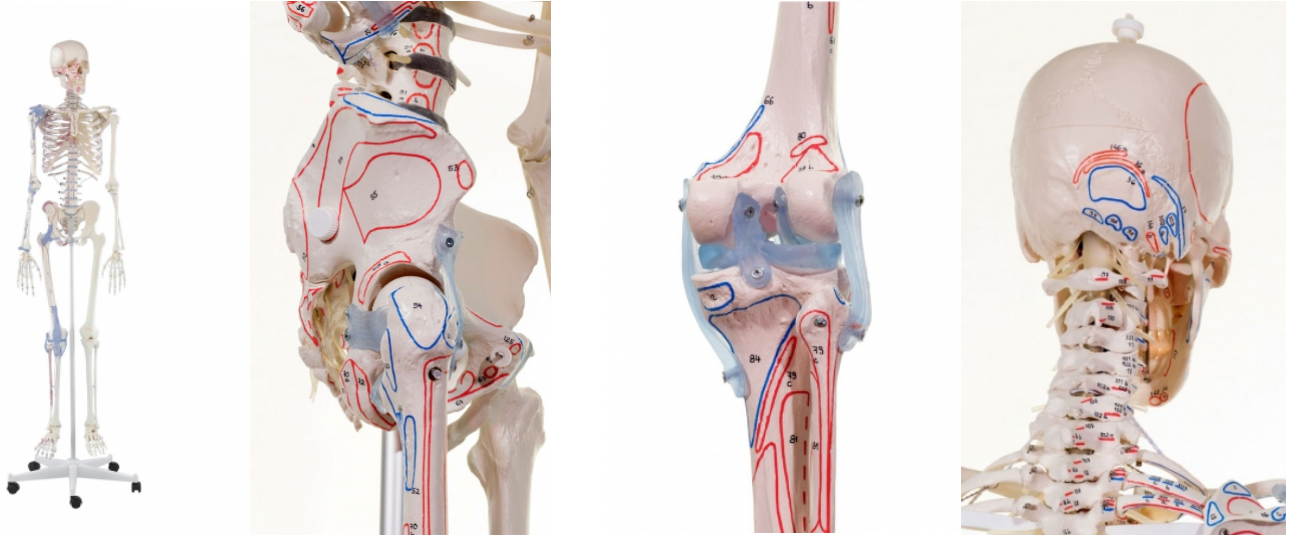


Skeleton Bert with muscle markings and ligaments

Price inquiry: +48 605999769, kontakt@openmedis.pl

Product code: MA00088



Anatomical skeleton with articular ligaments as well as muscle marking. All anatomical structures and details are represented in detail.

The model has the following characteristics:

- Natural casting of a human skeleton
- Representation of all anatomical details, fissures, foramina and processes
- Skull can be dismantled in three parts
- Removable arms and legs
- Gliding joints in shoulder, hip and ankle
- Leg can be dismantled at the knee
- Removable foot
- Movable shoulder blades
- 5-leg, safety castor-mounted stand
- Articular ligaments of knee, hip, elbow and shoulder on one side
- Marking of muscle origins and insertion points on one body side

With detailed manual.

- Size: 176 cm,
- weight: 9.5 kg