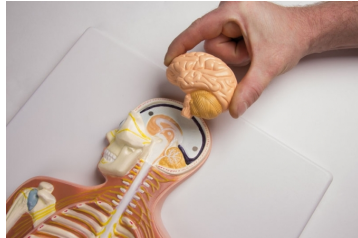


Nervous System, 1/2 life-size

Price inquiry: +48 605999769, kontakt@openmedis.pl

Product code: MA00730



This approximately half life-size relief model shows a general view of the peripheral and central human nervous system: the head is open to remove a brain half with cerebellum; the pathway of the main nerves is well illustrated in relation to the skeleton. Mounted on board.

Size: 90 x 31 x 12 cm, weight: 4.3 kg