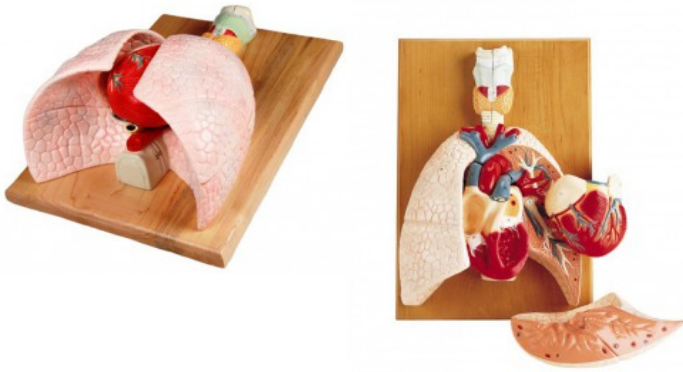


## Cardiopulmonary System

**Price inquiry:** +48 605999769, [kontakt@openmedis.pl](mailto:kontakt@openmedis.pl)

Product code: MA00663



This life-size anatomical model shows the lungs, heart, trachea, esophagus, larynx with vocal cords in their natural position. The right half of the larynx can be extended, as well as the heart and half of the left lung, thanks to which the bifurcation of the trachea, bronchial tree, pulmonary arteries and veins can be observed. The heart divides into two halves to show the 4 chambers and valves, and thus provides an understanding of the directional blood flow through the blood vessels and the heart. The pulmonary blood flow can be easily traced thanks to the illustrated main blood vessels. Additional information: The model is delivered with an educational card containing 58 numbered and translated items.

Dimensions: 43x28x15 cm