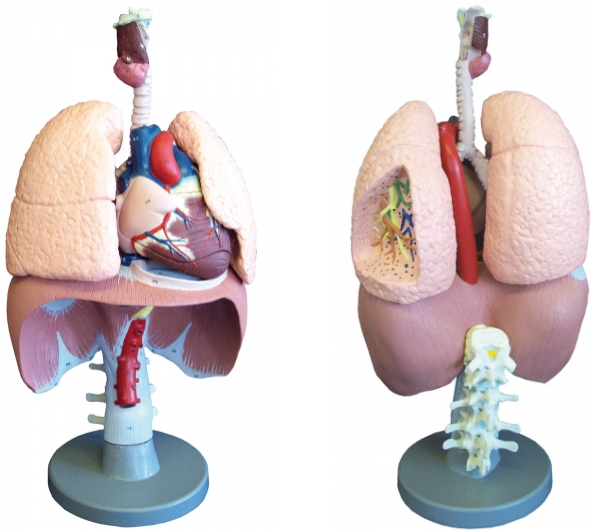


Respiratory organs

Price inquiry: +48 605999769, kontakt@openmedis.pl

Product code: MA00657



An anatomical model showing in detail the elements of the respiratory system in a 1: 1 scale. It also contains three thoracic and 3 lumbar vertebrae. The left lung is presented in cross-section to present bronchioles, pulmonary arteries and veins. The larynx's cross section shows its detailed structure. This model also shows the atria and ventricles of the heart, the main veins - the upper and lower, the aorta, pulmonary artery and coronary sinus.

Additional information:

- The model has a base and an instruction.
- Size: 41 x 23 x 19 cm