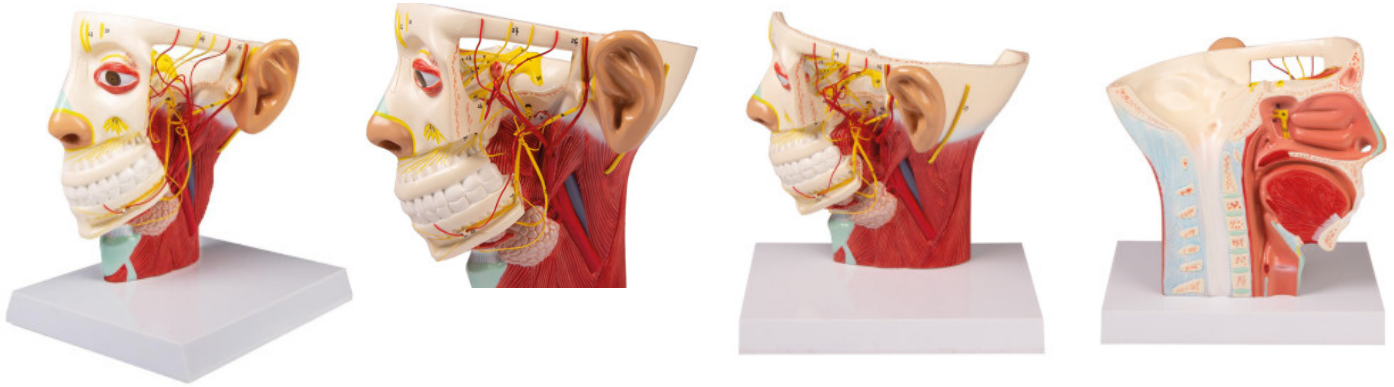


Nerves of the head

Price inquiry: +48 605999769, kontakt@openmedis.pl

Product code: MA04026



The **anatomical model** showing half of the head with the trigeminal nerve and its branches. The left side of the **anatomical model** also shows the muscles of the face and neck, e.g. sternocleidomastoid and trapezius muscle. The presented **anatomical model** of the head also shows blood vessels such as the carotid artery with its branches and the jugular vein. The model also presents the salivary glands and the external structure of the auricle. The right side of the **anatomical model** schematically shows the structure of the nasal cavity, sinuses, oral cavity, tongue, throat and the upper part of the esophagus. Model also shows the structure of the cervical spine.