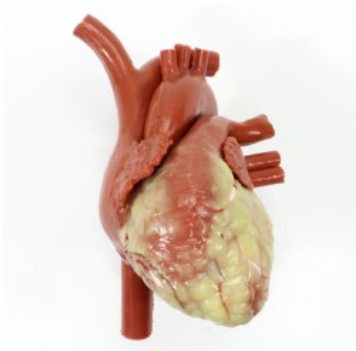


CABG Heart

Price inquiry: +48 605999769, kontakt@openmedis.pl

Product code: SM03713



Dimensions are c. 12.7 cm (atria/apex) x 9 cm wide x 7.5 cm (anterior/posterior). Suturable artery segments are embedded in the epicardium of our CABG Hearts to allow repeat practice of coronary vessel anastomosis. Each of these Native Coronary Artery segments may be used a number of times and then replaced, allowing years of training with a single heart. Replacement Native Coronary Vessels and suturable Graft Vessels (representing harvested internal mammary arteries or saphenous veins) are available in a number of different durometers and diameters. It features detailed exterior and interior components consisting of:

- four empty chambers with an interventricular septum,
- trabeculae and papillary muscles
- chambers and atria,
- dilated aorta,
- inferior and superior vena cava,
- pulmonary arteries and veins
- atrial appendages
- rings of the four heart valves.