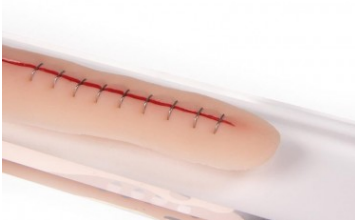


Surgical wound with staples, 22cm

Price inquiry: +48 605999769, kontakt@openmedis.pl

Product code: SM02911



This moulage is made of skin-friendly material and adheres by itself on the skin of a standardized patient, a manikin or on the supplied base.

Additional information:

- The moulage can be attached to any location of the body, for example over the knee to simulate a wound after a knee replacement or on the belly to simulate a cesarean section.
- The soft material moves with the body and can be attached over joints.
- If the moulage does not adhere well anymore, simply clean the backside with alcohol and it will stick strongly again. If the moulage shall be used for a longer course, we recommend a special skin glue.