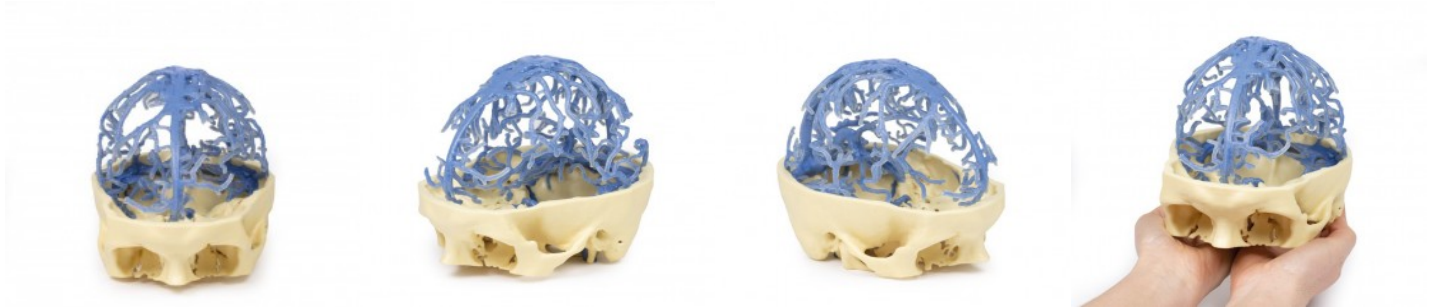


Cranial Venous Circulation

Price inquiry: +48 605999769, kontakt@openmedis.pl

Product code: AM02886



This 3D print presents the same dataset that underlies our circle of Willis and cranial arterial circulation 3D prints and is derived from careful segmentation of angiographic data. Here, the dural venous sinus network has been segmented based on structures visible from the circulation of contrast medium. As a result, while most of the sinuses are present, the lack of contrast in the anterior portions of the venous system means that some structures (cavernous sinus, petrosal sinuses) are not included in the model. The extensive network of dural veins and venous lacunae are visible, joined in the midline to the superior sagittal sinus. Deep to this network of sinus veins are the great cerebral vein, the inferior sagittal sinus and the straight sinus to its convergence with the superior sagittal at the confluence of sinuses. Several dural veins drain into the left and right transverse sinuses as they pass anterior towards the petrous portion of the temporal bone. The sigmoid sinuses can be seen in the posterior cranial fossa prior to exiting the skull at the jugular foramen and forming the internal jugular vein (visible on the inferior surface of the skull).