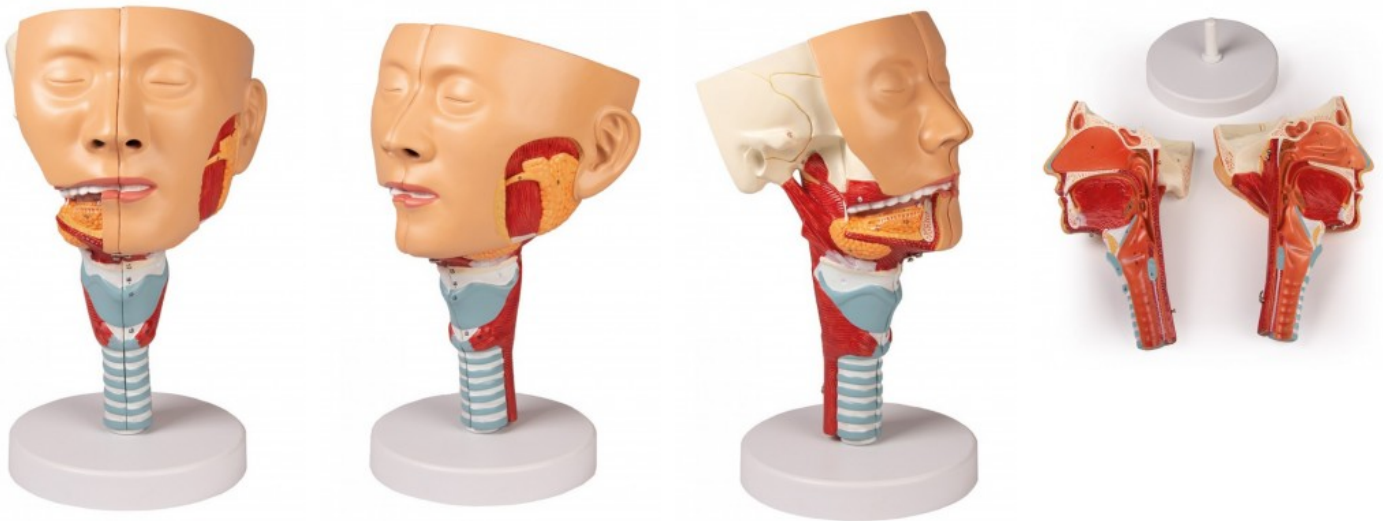


Head model with throat and larynx

Price inquiry: +48 605999769, kontakt@openmedis.pl

Product code: MA02497



This life size head model is dissected along the sagittal plane into 2 halves. Details of the oronasal cavity and larynx as well as musculature of the pharynx are exceptionally well represented. Mounted on base with stand.
Size: 15 x 15 x 30 cm, Weight: approx. 0.8 kg