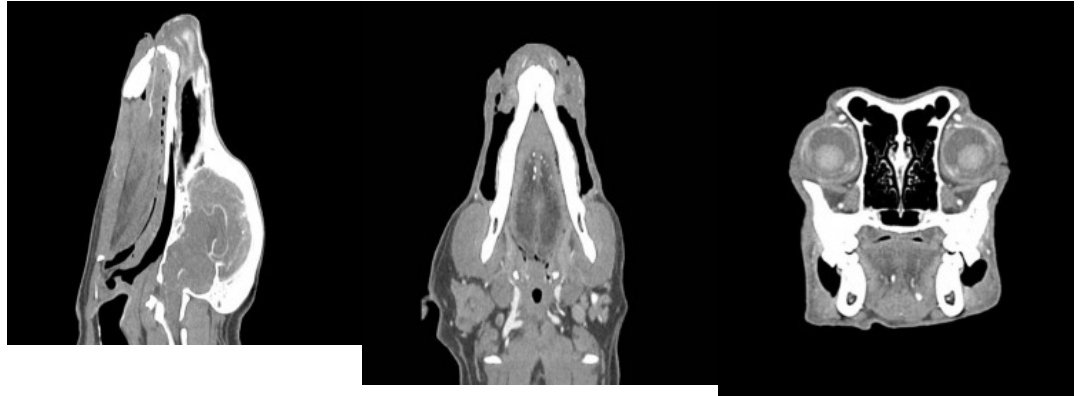


Canine head - phantom for CT and X-RAY

Price inquiry: +48 605999769, kontakt@openmedis.pl

Product code: MZ02422



Phantom provides a realistic simulation of a dog's head without a contrast agent. Bones and soft tissues are displayed authentically with realistic CT values for all tissues at a lamp voltage of 120 kWp in CT. The air spaces are filled with a cellulose-polymer composite with approximately -80 Hounsfield units. If the phantom is to be used mainly with other lamp voltages (e.g. 100 kWp), the calibration of the CT values can be adjusted if necessary. Phantom also provides realistic tissue contrasts in X-ray imaging.

Specification:

- weight: approx. 5 kg