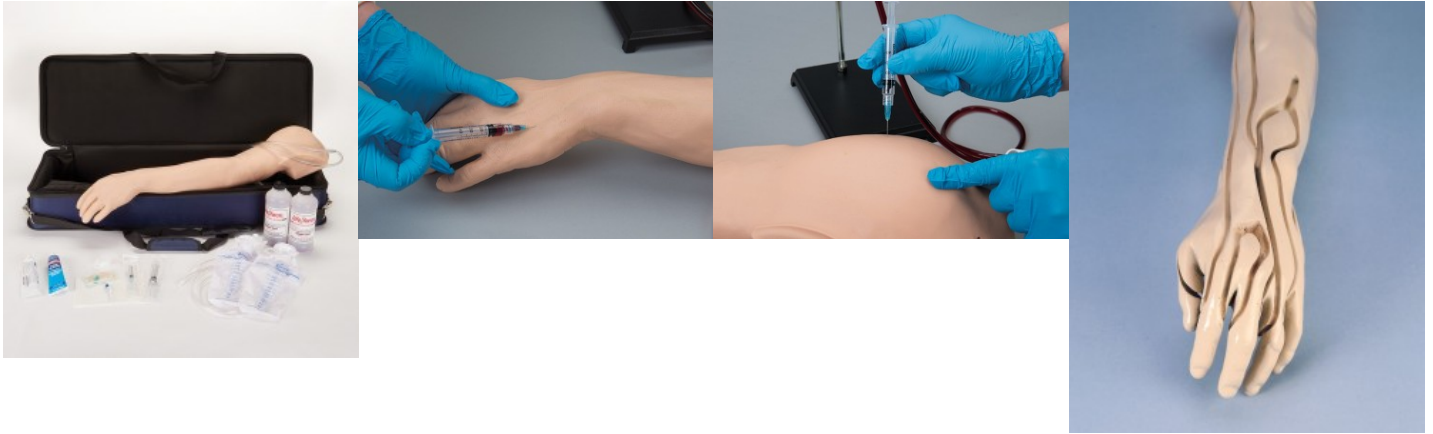


## Multi-venous IV & Injection arm, improved version

**Price inquiry:** +48 605999769, [kontakt@openmedis.pl](mailto:kontakt@openmedis.pl)

Product code: SM02419



This injection training model has the most injectable veins.

The following veins can be punctured:

- Basilic V.
- Dorsal metacarpal V.
- Median basilic V.
- Cephalic V.
- Digital V.
- Median cephalic V.
- Accessory cephalic V.
- Thumb V.
- Median antebrachial V.
- Median cubital V.

Now with new and improved vessel system, including non-visible/non-palpable veins, Rolling veins, disappearing and "difficult" veins. New improved skin for more realistic touch and feel. Changing the skin is much easier than before!

Vein and skin can be replaced, the arm is moveable to enable the student to develop manipulation skills. I.m. and subcutaneous injection is also possible at this model. Supplied with storage bag.