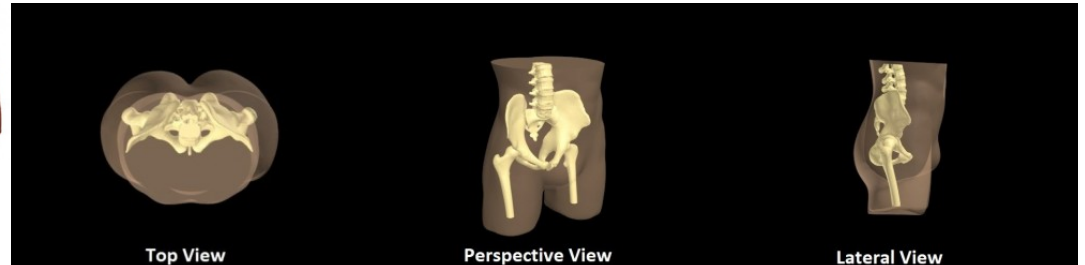


Adult Pelvis Phantom

Price inquiry: +48 605999769, kontakt@openmedis.pl

Product code: FR02357



The Adult Pelvis Phantom is designed based on an average human anatomy and it is made out of realistic patented bone material that is suitable for CT and anthropomorphic applications. It can be used for medical imaging research, radiology training and testing and calibration of X-Ray machines.

The following anatomical structures are included:

- Lumbar sacral spine
- Pelvis bone with anatomically correct structures and shape
- Partial femoral bones
- Realistic soft tissue surrounding the bone

The bones have a realistic three-layered structure with inner porosity which can be adjusted according to the requirement of the particular project. The phantom can be customized in size and shape (i.e. based on the individual's CT scan).

Materials used:

- Soft tissue and organs: Composition of urethane base resin
- Synthetic bones: Patented ceramic-reinforced epoxy-based composite material

Dimensions and Weight:

Size: 85 x 32 x 32 cm (approx.) Weight: 40 kgs (approx.)

Your order will Include:

- Male Standard Pelvis
- Design video
- Manual
- Hard carry case (optional)