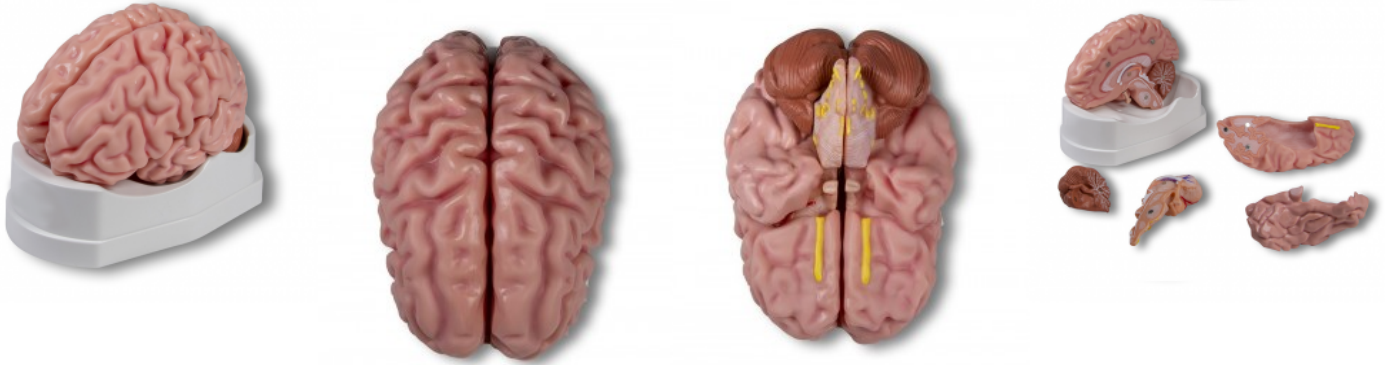


## Anatomical brain model, life-size, 5 parts

**Price inquiry:** +48 605999769, [kontakt@openmedis.pl](mailto:kontakt@openmedis.pl)

Product code: MA02272



This life-sized brain model is carefully painted in realistic color depicting the major anatomy of the brain. The left half comes apart in four pieces- the frontal and parietal, the temporal and occipital, the brainstem, and the cerebellum. The brainstem includes the trigeminal nerve (V), abducens nerve (VI), vestibulocochlear nerve (VIII), facial and intermediate nerves (VII), trochlear nerve (IV), olfactory nerve (I), glossopharyngeal nerve (IX), vagus nerve (X), accessory nerve (XI), cervical ventral roots, and hypoglossal nerve (XII). The hippocampus is attached to the brainstem to show the

relation of the hippocampus to the fornix and mammillary body in the brainstem. The choroid plexus is also shown.