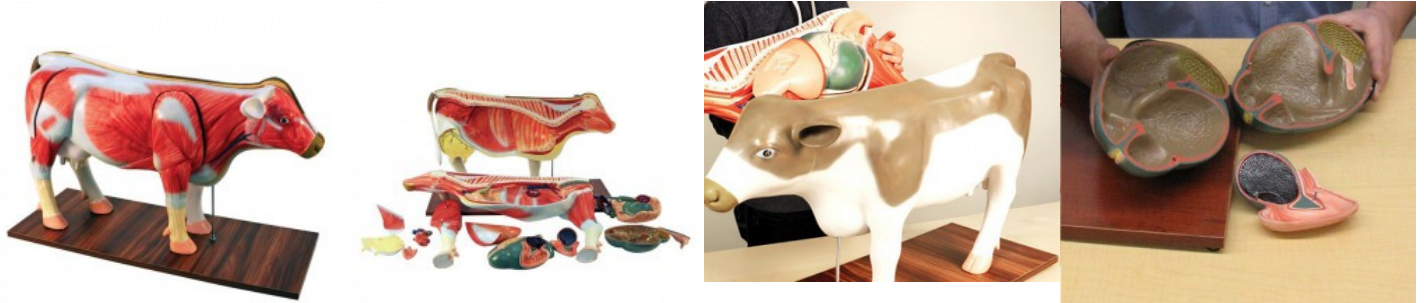


Cow anatomical model, 13 parts

Price inquiry: +48 605999769, kontakt@openmedis.pl

Product code: MZ01911



Reduced-size model of a cow on the base. Intended for educational purposes for students. It has the ability to divide into 14 separate parts of the body and organs. The model presents the muscular structure of a breeding cow on one side, while on the other the outer structure (muscular) is visible. It is possible to divide the whole model in the sagittal section, thanks to which it presents the internal structure, including the digestive system, reproductive system and udder structure.

Removable parts: muscle leg*

2, stomach*3, liver and intestine*1, lung*1, uterus*1, heart*2, breast*1, tail*1, body*2

Additional features:

- Size: approx.: 91x35x55cm
- Weight: 20,5kg
- User manual
- Fully colored
- model on base