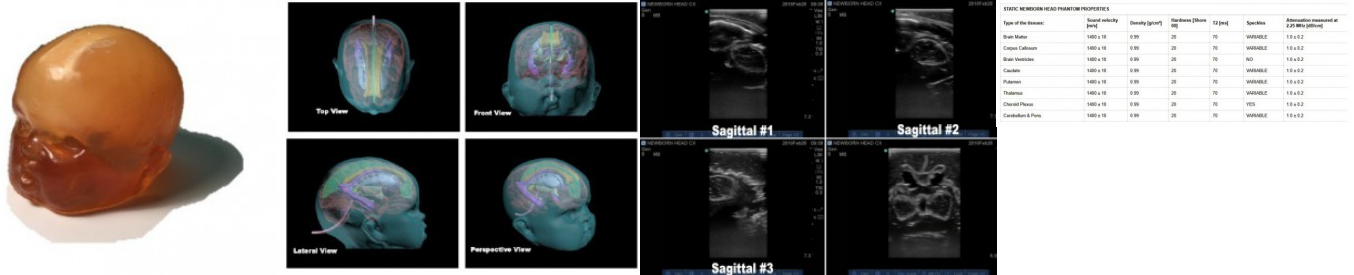


Advanced Newborn head phantom for ultrasonography training

Price inquiry: +48 605999769, kontakt@openmedis.pl

Product code: FR01902



Anatomically correct phantom of a newborn's head. It was designed based on the average head of a newborn baby. Made of realistic tissue mimics, suitable for ultrasound maging.

The phantom consists of following components:

- Realistic Brain
- Corpus Callosum
- Falx
- Brain Ventricles
- Septum pellucidum
- Caudate nucleus
- Putamen
- Thalamus
- Choroid Plexus
- Cerebellum & Pons

Additional information:

- It is possible to adapt the head model of a newborn to the needs of a given project.
- For the purposes of the quote, please send the specifications in the inquiry.