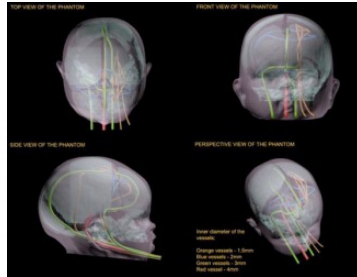




Newborn head phantom for MRI, CT and ultrasound diagnostics (Dynamic)

Price inquiry: +48 605999769, kontakt@openmedis.pl

Product code: FR01898



Anatomically correct newborn head phantom. Phantom is designed to imaging the medical flow of blood under the skull. It has been designed based on the average head of a newborn and is made of realistic materials that mimic the soft and hard tissue of appropriate structures for USG, MRI and CT applications.

Phantom consists of the following elements:

- Anatomically correct realistic skull
- Skull filled with acoustically correct brain mimicking material
- Complex blood vessel structure with incorporated Circle of Willis
- One bifurcation
- Complex network of small vessels

PLEASE NOTE: WE CAN CUSTOMIZE THIS PRODUCT BASED ON YOUR REQUIREMENTS!