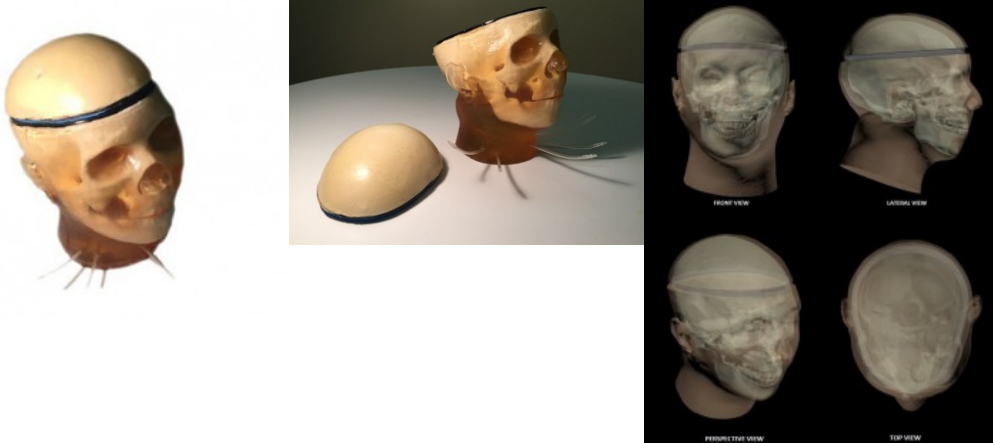


## The openable head phantom for X-Ray, Nuclear Medicine, CT, Ultrasound and MRI

**Price inquiry:** +48 605999769, [kontakt@openmedis.pl](mailto:kontakt@openmedis.pl)

Product code: FR01877



Realistic phantom of the head of an adult man with the possibility of detaching the skull calvaria. It was designed to take **magnetic resonance imaging (MRI), CTomography, ultrasonography, X-ray pictures. It is also used in nuclear medicine.**

These phantoms can be used for medical imaging, both static and dynamic. Ideally suited for training medical students and practitioners. The design of this phantom is based on the average human head of a man and is made of several realistic tissues mimicking materials that are suitable for ultrasound, MRI and CT applications.

**The basic set contains:** anatomically correct, opened skull, opened skull calvaria, the material used has properties similar to natural human tissues anatomically correct brain (optional)

Based on the requirements of a given project, you can choose any of the following functions or a combination of them:

- Grey Matter Cerebrum
- White Matter Cerebrum
- Aneurysm/Stenosis feature
- Brain ventricles feature
- Epidural feature
- Tumor feature
- Bifurcation feature
- Blood vessels feature
- Skull/Calvaria feature
- Foreign objects feature
- Skin feature
- Falx Cerebri feature
- lymph nodes
- salivary glands
- thyroid gland

The set comes with instructions and a transport bag.

Possibility to make a phantom with its own proprietary specification. In order to pricing, please send us your



specifications with a list of functions selected from the above list.