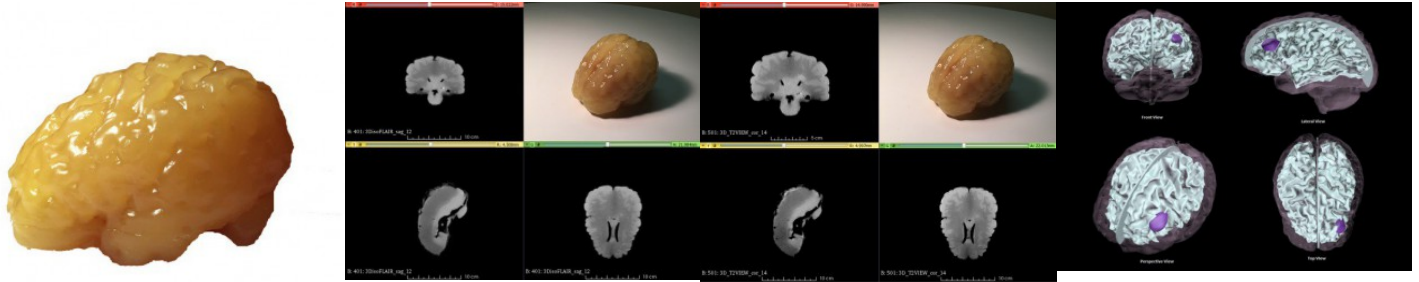


Adult brain phantom for puncture/biopsy under ultrasound guidance (Basic)

Price inquiry: +48 605999769, kontakt@openmedis.pl

Product code: FR01876



A professional brain phantom. Anatomically correct, made based on the average human brain, performed from realistic materials that mimic human tissues. Phantom is intended for ultrasonography diagnostic (USG), magnetic resonance (MRI) and tomography (CT) training. **The model is also suitable for puncture/ biopsy - the ability to assess the position of the needle. ATTENTION! A needle puncture leaves a lasting trace in the phantom.**

There is a possibility to adjust the phantom for the needs of a given project.

Basic version of phantom consists the following features / functions:

- geometry and dimensions of the average human brain
- gray matter
- white matter
- tumor

Additional information:

- ideal for training imaging diagnostics for doctors, medical students, electroradiologists, radiology technicians
- the model is also **suitable for puncture** - the ability to assess the position of the needle. **ATTENTION! A needle puncture leaves a lasting trace in the phantom.**
- It is possible to adjust the characteristics of the model for a given project.

Detailed properties: