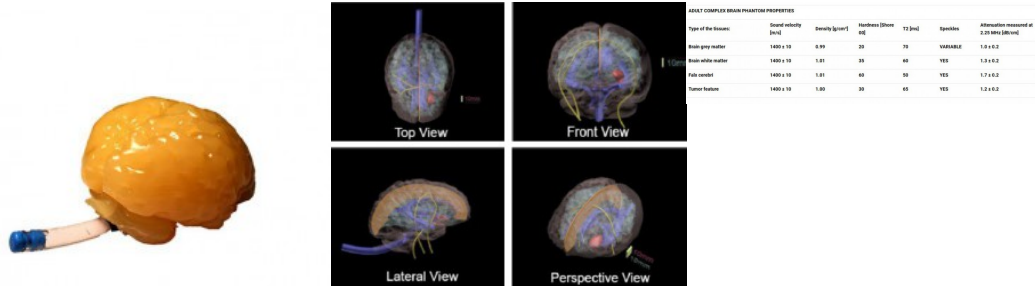


Advanced Adult brain phantom for diagnosis of MRI, CT and ultrasound

Price inquiry: +48 605999769, kontakt@openmedis.pl

Product code: FR01872



A professional, multipurpose brain phantom. Anatomically correct, made based on the average human brain, built from realistic materials that mimic human tissues. Phantom is intended for ultrasonography diagnostic (USG), magnetic resonance (MRI) and tomography (CT) training.

Upon special request, the phantom features and the properties of the tissue mimicking materials can be customized based on the requirements of any particular project.

Advanced version of phantom consists the following features / functions:

- geometry and dimensions of the average human brain
- gray matter
- white matter
- tumor
- Brain ventricles
- Blood vessels with 2mm inner diameter and one bifurcation
- Falx cerebri

Additional information:

- ideal for training imaging diagnostics for doctors, medical students, electroradiologists, radiology technicians
- the model is also **suitable for puncture** - the ability to assess the position of the needle. **ATTENTION! A needle puncture leaves a lasting trace in the phantom.**
- **It is possible to adjust the characteristics of the model for a given project.**
- **The possibility of adding contrast**