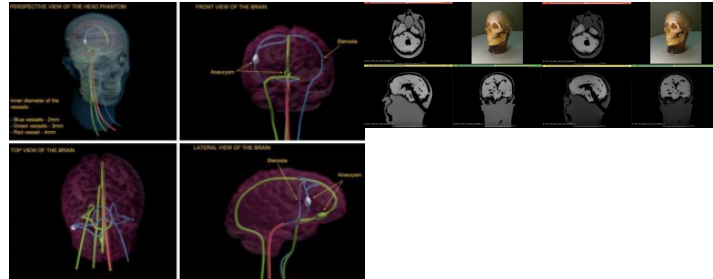


Adult Head Phantom (Dynamic) for MRI, CT and Ultrasonography

Price inquiry: +48 605999769, kontakt@openmedis.pl

Product code: FR01870



A professional, realistic head phantom designed for imaging the medical flow of blood in the skull. Phantom is designed based on a medium-sized man's head and is made of realistic materials that mimic human tissue. Ideally suited for ultrasound, MRI and CT applications.

Phantom consists of the following elements:

- Anatomically correct realistic skull
- Realistic brain phantom
- A complex structure of blood vessels with a built-in Willis circle
- One bifurcation
- One stenosis
- One aneurysm

Additional information: Instruction, Transport bag, Detailed specification on request

THERE IS POSSIBILITY TO CUSTOMIZE THIS PRODUCT BASED ON YOUR REQUIREMENTS!