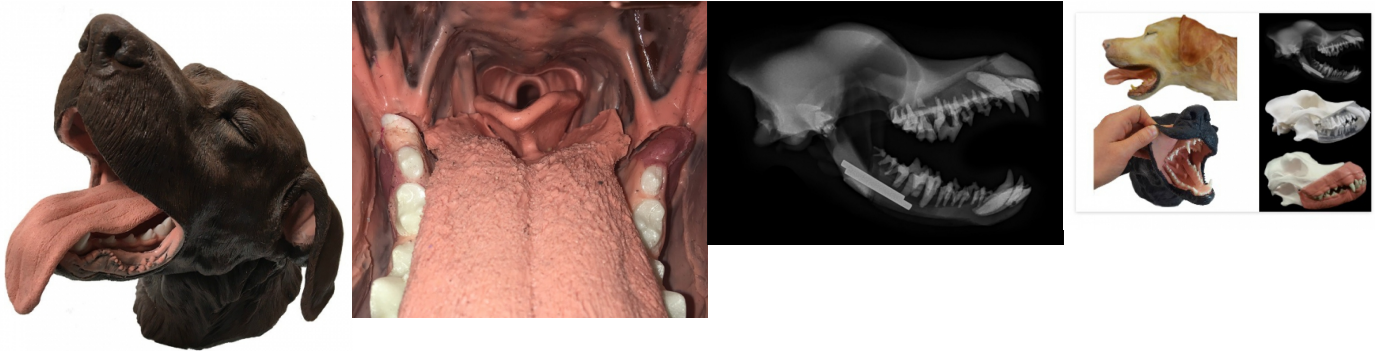


Canine Dental Technician Model

Price inquiry: +48 605999769, kontakt@openmedis.pl

Product code: M01681



This very true-to-life simulator was especially developed for dental technology. It has a wide variety on training possibilities.

- Simulated teeth and bone are surrounded with soft rubber gums
- Allows for practical simulation including manual and ultrasonic scaling, probing, nerve blocks, as well as tongue, epiglottis, esophagus, and trachea to allow for intubation training
- Maxilla and mandible are easily replaced
- Model comes with clamp and arm, and two jaw sets:
 - One set with calculus accumulation for scaling
 - One radiodense jaw set to practice positioning techniques for radiographs
- X-ray set has gums complete with periodontal ligament