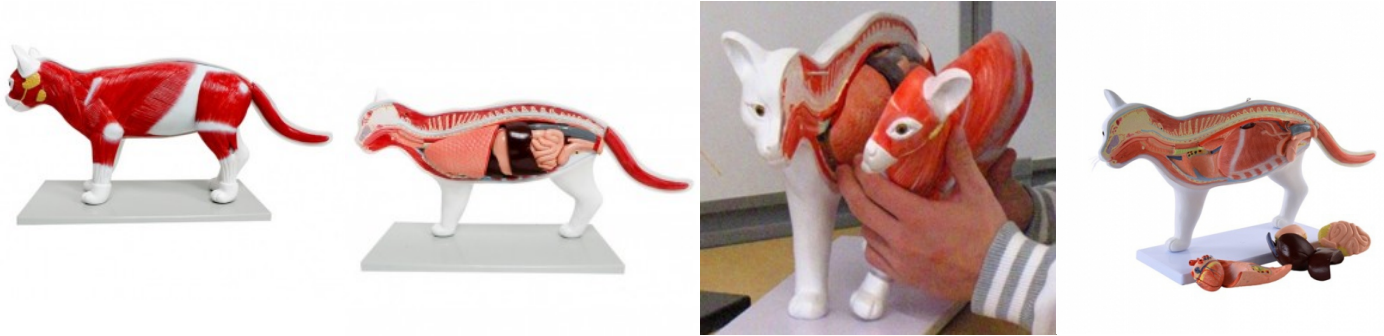


Disassemblable Anatomical Cat Model, 11 parts

Price inquiry: +48 605999769, kontakt@openmedis.pl

Product code: M01674



This anatomical model visualises the muscular and some skeletal structures as well as the internal organs of a cat. It can be removed and partially disassembled in order to provide a malleable representation and excellent assessment of the individual organs.

The Following Organs can be Removed:

- Lungs
- Liver
- Heart (disassemblable)
- Stomach (disassemblable)
- Colon with pancreas
- Rectum with bladder (disassemblable)

More details:

- Disassemblable model of a cat (life-size)
- Some organs can be removed and taken apart
- With removable tail
- Cat dimensions (L x W x H): **approx. 62 x 13 x 29 cm** (mounted)
- Base dimensions (L x W x H): **approx. 43 x 19.5 x 1.5 cm**