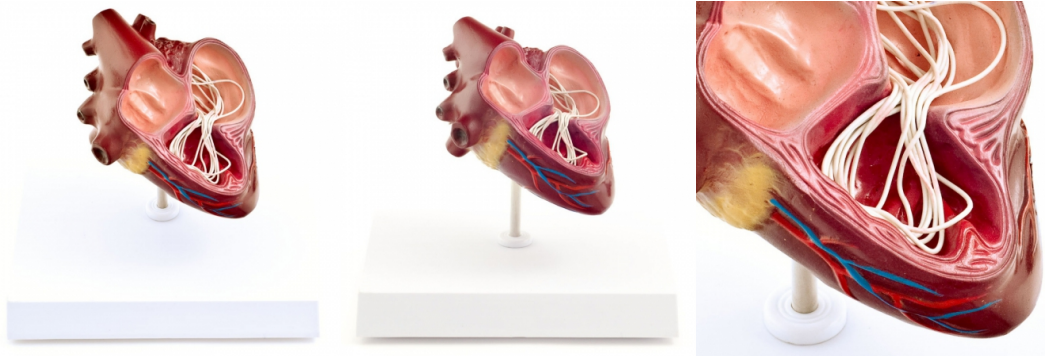


Canine Heartworm Model

Price inquiry: +48 605999769, kontakt@openmedis.pl

Product code: M01672



This anatomical model depicts an average-sized dog's heart that is infected with *Dirofilaria immitis*. The cut-away model shows the structures of the heart where adult heartworms can usually be found in the event of severe infestations.

The heart model can be used as a topical decoration in a veterinary clinic and as an informational object for vulnerable or infected patients.

Illustrated Details:

- Blood vessels
- Fat
- 3 sections with heartworms

More details:

- Dimensions (L x H x W): **16,5 x 13 x 20 cm**
- **Weight: 0,43 kg**
- Mounted with a stand on a white plastic base
- Can be used to explain dirofilariosis