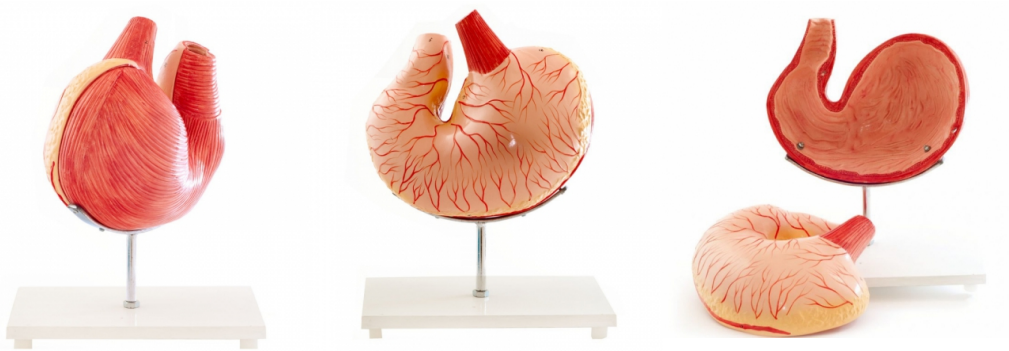


Canine stomach model

Price inquiry: +48 605999769, kontakt@openmedis.pl

Product code: M01670



This anatomical model of a dog's stomach can be disassembled into two parts, and clearly illustrates the anatomy and inner composition of a dog's stomach. The canine stomach model is mounted on a white wooden base.

Veterinarians often use the canine stomach model to explain the disorders of a dog's stomach to pet owners and to clarify anatomical relationships.

- 2 parts, can be disassembled
- Shows the cross section of an average size dog stomach
- Mounted on a white wooden base
- Size (L x H x W): **20 x 30 x 15 cm**
- **Weight: 1,00 kg**