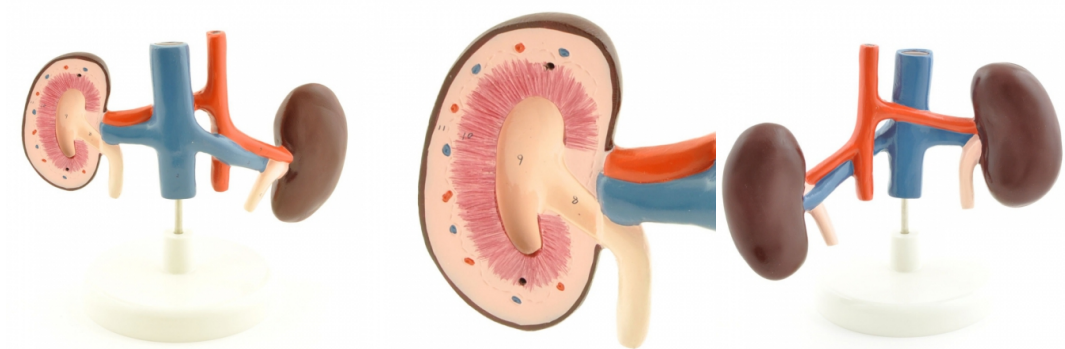


Dog Kidney Model with blood vessels

Price inquiry: +48 605999769, kontakt@openmedis.pl

Product code: M01669



This detailed and **partially disassemblable** model of a dog's kidneys also shows segments of the blood vessels such as the **renal artery** (Arteria renalis), the **renal vein** (Vena renalis) and the **ureter**. It can be disassembled to allow for the study of the organ's internal structure.

- Detailed model of two dog kidneys (1 kidney can be opened)
- Shows sections of the renal artery and vein and the ureter
- Mounted on a base
- Dimensions (L x H x W): **22 x 22 x 15 cm**
- **Weight: 0,7 kg**

Some visible structures on the Dog Kidney Model include:

- Renal pelvis
- Ureter
- Renal capsule
- Renal medulla
- Renal poles
- Renal artery
- Renal vein