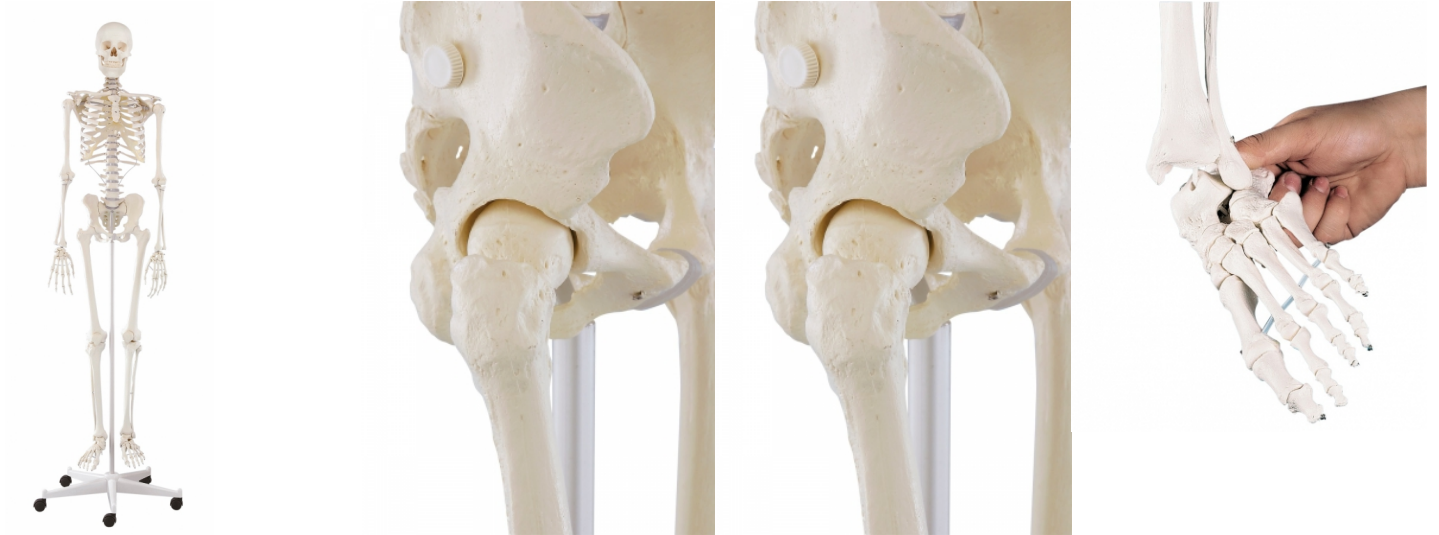


Skeleton Wili

Price inquiry: +48 605999769, kontakt@openmedis.pl

Product code: MA01633



The ideal model for anatomical study. All details and structures are faithfully reproduced.

The model has the following characteristics:

- Natural casting of a human skeleton
- Representation of all anatomical details, fissures, foramina and processes
- Skull can be dismantled in three parts
- Removable arms and legs
- Gliding joints in shoulder, hip and ankle
- Leg can be dismantled at the knee
- Removable foot
- Movable shoulder blades
- 5-leg, safety castor-mounted stand

Size: 176 cm, Weight: 9.5 kg