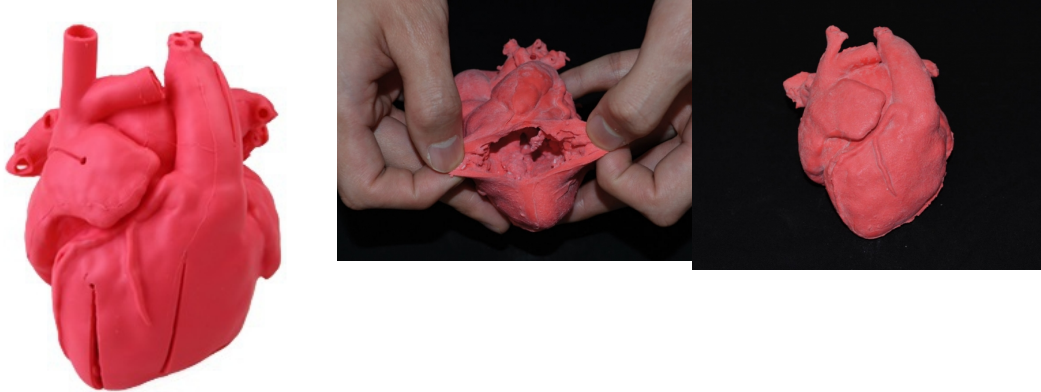


Pediatric heart with corrected transposition of great arteries and ventricular septal defect (VSD) G570EZ

Price inquiry: +48 605999769, kontakt@openmedis.pl

Product code: MA01497



The pediatric congenital heart disease model is based on actual CT data, and is a precisely produced, urethane based, soft model. This product was created with the intention of being a support tool for doctors performing treatments which require advanced skills and considerable experience.

The parts listed below are reproduced along with disease specific areas:

- right ventricle,
- left ventricle,
- right atrium,
- left atrium,
- coronary arteries,
- coronary veins,
- aorta,
- superior vena cava,
- inferior vena cava,
- pulmonary vein,
- mitral valve,
- tricuspid valve,
- aortic valve,
- pulmonary valve,
- papillary muscle
- coronary sinus.

Size: 8.1 x 8.9 x 8.6 cm