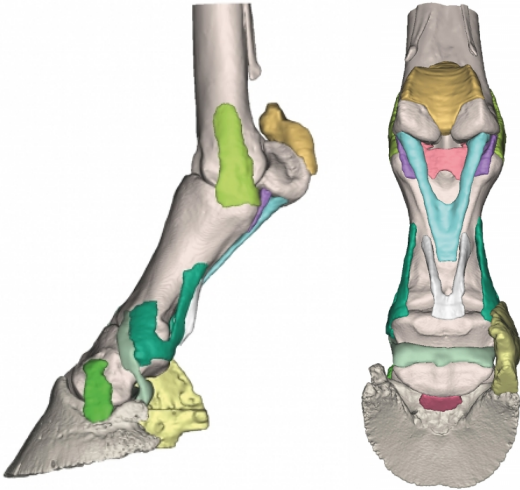


Foot of a horse as model - Model 4

Price inquiry: +48 605999769, kontakt@openmedis.pl

Product code: M01378



Derived from CT and MR co-registered data, anatomically accurate and lifesize. 3D printed in full color, each anatomical component is individually colored. Hoof capsule is available separately and anchors the distal limb in the stance position. The series consists of four models: starting from Model 1 showing the full anatomy of the foot and comprised of 25 anatomical structures to step-by-step reduced models showing deeper structures.

Model 4:

This model, stripped of tendons and the suspensory ligament, shows the bones of the foot and their deep supporting ligaments.