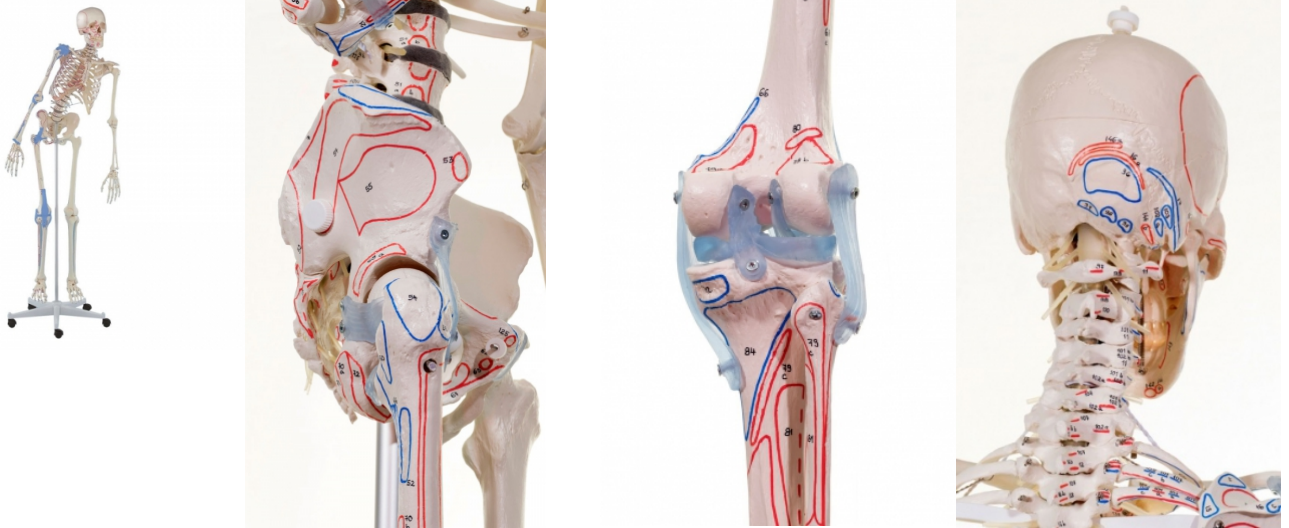


Skeleton Max with movable spine, muscle markings and ligaments

Price inquiry: +48 605999769, kontakt@openmedis.pl

Product code: MA01347



This therapy skeleton offers marking of the muscle origins and insertion points on one body side in addition to the moveable vertebral column and muscle marking.

The model has the following characteristics:

- Natural casting of a human skeleton
- Representation of all anatomical details, fissures, foramina and processes
- Skull can be dismantled in three parts
- Removable arms and legs
- Gliding joints in shoulder, hip and ankle
- Leg can be dismantled at the knee
- Removable foot
- Movable shoulder blades
- 5-leg, safety castor-mounted stand
- Articular ligaments of knee, hip, elbow and shoulder on one side
- Marking of muscle origins and insertion points on one body side
- Fully moveable vertebral column with flexible intervertebral discs and emerging spinal nerves
- With detailed manual.