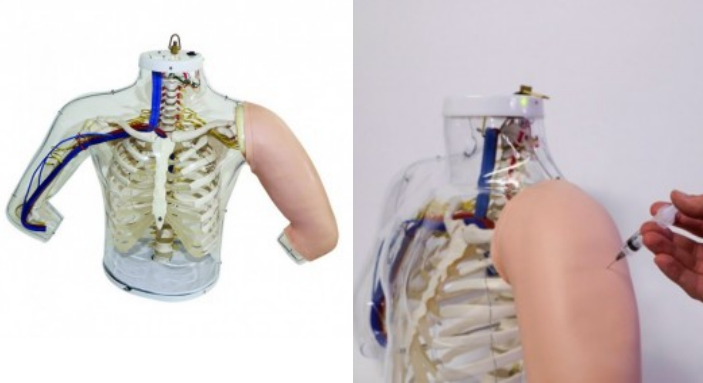


Model of shoulder and arm anatomy / i.m. injection technique

Price inquiry: +48 605999769, kontakt@openmedis.pl

Product code: SM01313



This model offers two functions in one model: on the right side it shows the anatomy of the upper arm and the shoulder including the bones and the muscles and nerves which are of importance for the injection. The student can transfer the anatomy visible on the right side to the left side and can then practice the technique of intramuscular injection there. The most important anatomical landmarks can be felt on the left side. The injection can be carried out with liquid. A green lamp lights up to confirm that the injection has been placed at the correct location. If it is placed at any other location, this is indicated by a red lamp and a buzzing sound.

Size: 50 x 75 x 30 cm