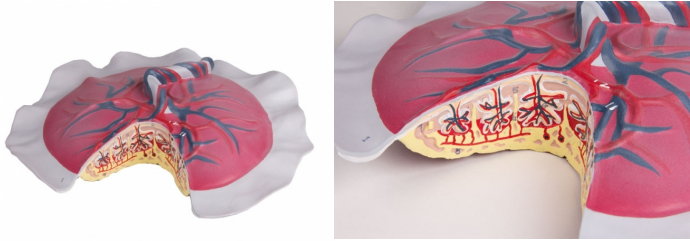


Placental Circulation

Price inquiry: +48 605999769, kontakt@openmedis.pl

Product code: MA01194



A detailed model, natural-size, showing all the major structures of the placenta in realistic coloring, manufactured in flexible material. The cotyledons on the maternal surface are shown, with the amnion and chorion membranes on the foetal surface. The umbilical vessels can be seen through the membrane of the cord. A section into the placenta exposes the subchorial space, villi with foetal arteries and veins, decidua septa, spiral arterioles and marginal sinus. With key card.