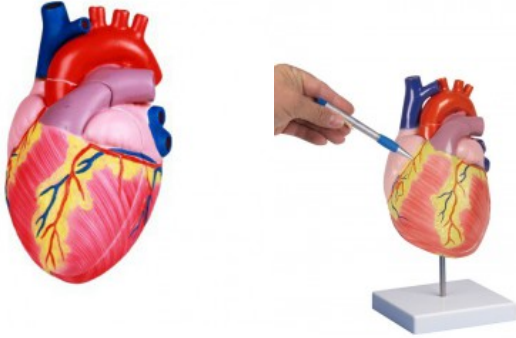


Human heart, 2 time life size, 2 parts

Price inquiry: +48 605999769, kontakt@openmedis.pl

Product code: MA01080



Product information: Human heart, 2 time life size, 2 parts Anatomical model of the human heart doubled life size. Made of durable, unbreakable plastic. Possibility to remove it from the base. The front heart wall is removable and shows ventricles, atriums, aortic, mitral, pulmonary and tricuspid valves. In this model the heart muscles cross section and the coronary vessels are perfectly visible. Heart muscle, fatty tissue, arteries and veins are painted in detail; the structures are shown on the educational card (German/English). The model is made of unbreakable plastic and removable from the stand. **Dimensions:**

- Size: 11 x 11 x 18 cm,
- weight: 1.2 kg