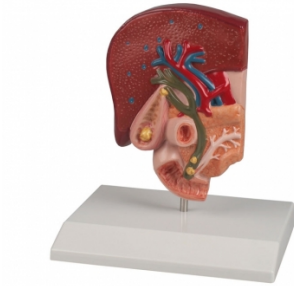


Gallstone Model

Price inquiry: +48 605999769, kontakt@openmedis.pl

Product code: MA01094



This half natural size model shows the anatomy of the biliary system and its surroundings in great detail. Both the tissue changes caused by chronic inflammation and acute inflammation (cholecystitis) are represented in the gallbladder wall. Gallstones are shown in the following typical places:

- spiral valve- fundus of the gall bladder- common bile duct- papillary opening to the small intestine.

Mounted on base.

Diseases of Pancreas, Spleen, Gall bladder

Price inquiry: +48 605999769, kontakt@openmedis.pl

Product code: MA01179



This full size model shows pancreatic cancer, the gallbladder with stones, a ruptured spleen and duodenum with an ulcer.

Haemorrhoids model

Price inquiry: +48 605999769, kontakt@openmedis.pl

Product code: MA01198



This descriptive model for patient education in about twice life size shows a frontalsection through the rectum. Additionally a smaller section can be found on the base as relief. The model shows outer haemorrhoids as well as inner haemorrhoids stage I and II. The additional relief model shows haemorrhoids stage III and IV. Also the anatomical structures of rectum, sphincter and venous plexus are represented.
Size: 17 x 12 x 10 cm

Colon model with diseases

Price inquiry: +48 605999769, kontakt@openmedis.pl

Product code: MA01098

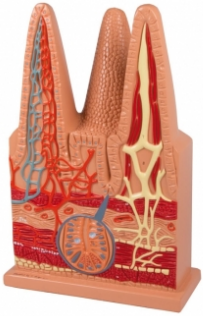


Reduced size model of a human colon showing ileum, caecum, ascending colon, transverse colon, descending colon, sigmoid colon and rectum. The following diseases are depicted: appendicitis, Crohn's disease, irritable bowel syndrome, ulcerative colitis, pseudomembranous colitis, diverticulosis, diverticulitis, carcinoma and colorectal polyps. On removable stand. With educational card.

Intestinal Villi, 100 times life-size

Price inquiry: +48 605999769, kontakt@openmedis.pl

Product code: MA00944



This 100 times life-size model consists of one entire villus, one longitudinally sectioned villus showing the arterioles and venules and one cross-sectioned villus to show the lymphatic vessels. Also includes a longitudinal section of Lieberkühn's crypt.

Size: 43 x 28 x 10 cm

Villus enlarged, 2-parts

Price inquiry: +48 605999769, kontakt@openmedis.pl

Product code: MA00946



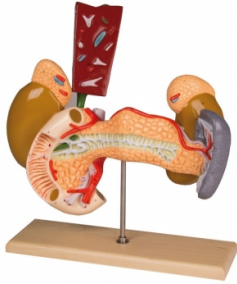
This greatly enlarged 2-part model of a villus from the small intestine shows detail from a transverse and longitudinal section. Mounted on base, with key card.

Size: 17.5 x 15 cm

Internal organs, 2 parts

Price inquiry: +48 605999769, kontakt@openmedis.pl

Product code: MA00943



The organs are shown partially opened, and the gall bladder is removable with part of the liver.

It depicts:

- Pancreas
- Duodenum
- Gall bladder
- Spleen
- Kidneys
- Adrenal glands
- Blood vessels

Mounted on wooden stand.

Size: 33 x 28 x 15 cm

Oesophagus Diseases

Price inquiry: +48 605999769, kontakt@openmedis.pl

Product code: MA01101



This life-size model shows a frontal section of the lower part of the oesophagus and the upper part of the stomach.

The most common diseases are depicted:

- Hiatal hernia
- Ulcer
- Reflux oesophagitis
- Barrett's Ulcer
- Oesophageal varices
- Oesophageal carcinoma

Mounted on base.