

Liver Lobule

Price inquiry: +48 605999769, kontakt@openmedis.pl

Product code: MA01093



This greatly enlarged model shows the fine detail of a single liver lobule, which is sectioned and shown in relationship to portions of surrounding lobules. The fine colouring distinguishes the portal veins and vessels, venous sinusoids and central veins with sections through the bile canaliculi. With key.

Size: 25 x 15 x 6 cm

Liver with gall bladder, pancreas and duodenum

Price inquiry: +48 605999769, kontakt@openmedis.pl

Product code: MA00949



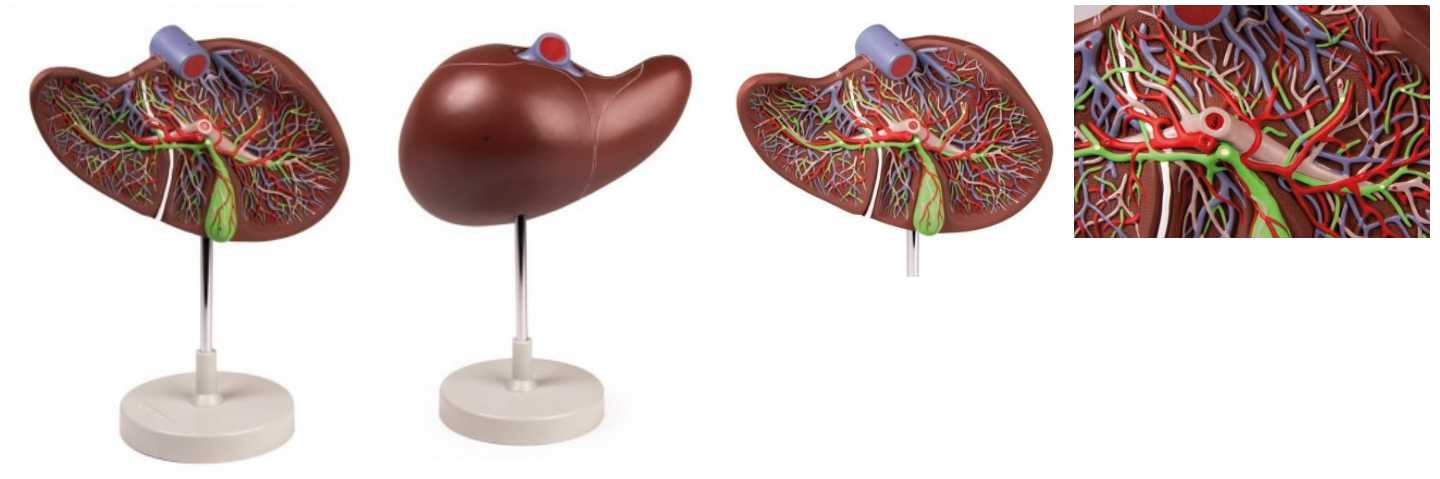
This life size model shows a section of the liver with gall bladder, pancreas and duodenum; includes hepatic and pancreatic ducts. Mounted on board.

Size: 4 x 20 x 18 cm

Liver and Gall Bladder

Price inquiry: +48 605999769, kontakt@openmedis.pl

Product code: MA08004



Enlarged 1.5 times, this model shows a liver that is dissected to expose the internal distribution of arteries and veins, the portal vein and the bile duct. Mounted on stand.
Size: 15 x 26 x 12 cm, Weight: approx. 1 kg