

Male genital organs, 4 part

Price inquiry: +48 605999769, kontakt@openmedis.pl

Product code: MA01592



This life size 4 part model is dissected through the median sagittal plane and provides excellent views of external and internal structures. The removable parts include two halves of the penis, showing medial and transverse sections, and two halves of the male reproductive system with excellent detailing of internal structures.

Size: 14 x 20 x 12 cm, weight: approx. 0.5 kg

Female Pelvis, life size, 3-part

Price inquiry: +48 605999769, kontakt@openmedis.pl

Product code: MA00955



This life size model is median sagittal sectioned and shows the female pelvis in 3 parts. Additional to muscles and vessels of the abdomen it depicts particularly the urogenital organs. Removable are one half of the uterus, vagina and bladder as well as one half of bowel with rectum.

Size: 22 x 20 x 25 cm, weight: approx. 1 kg

Female genital organs, 4 parts

Price inquiry: +48 605999769, kontakt@openmedis.pl

Product code: MA00952



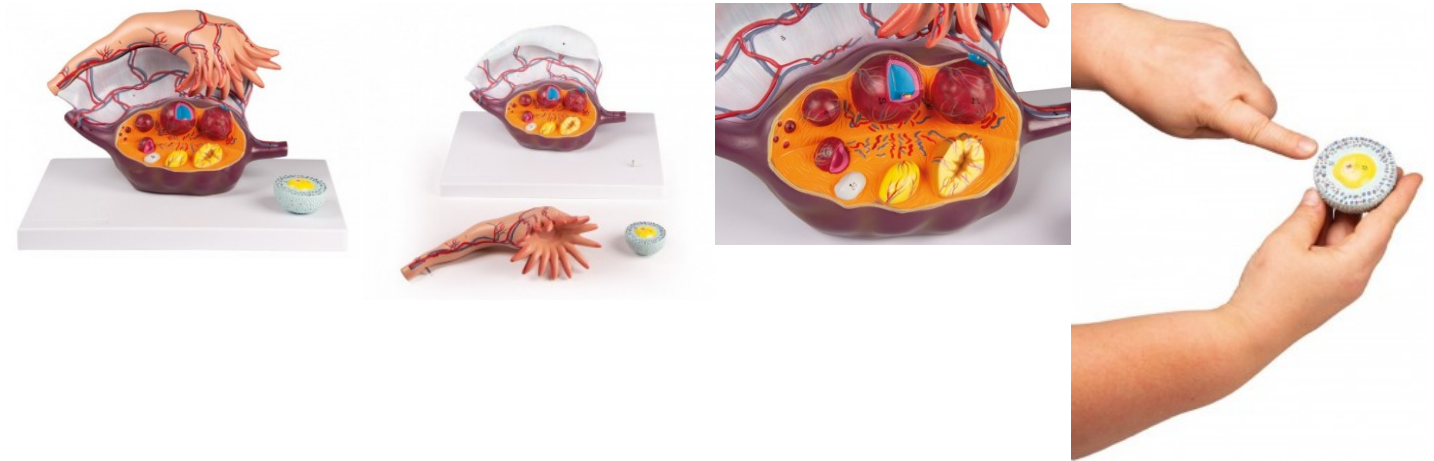
This life size model, composed of 4 parts, is a detailed representation of the female reproductive system as viewed through a median sagittal dissection. Removable parts include a 2-part uterus and two halves of the female reproductive apparatus with details of the internal structure.

Size: 14 x 14 x 12 cm, weight: approx. 0.5 kg

Enlarged Ovary

Price inquiry: +48 605999769, kontakt@openmedis.pl

Product code: MA08103



This 2part, 5times life size model shows the anatomy of the human fallopian tube and ovary. The follicles are shown at different stages of maturation, from the primary follicle to the corpus albicans. A primary follicle is cross-sectioned, to illustrate the inner structure. The oocyte, zona pellucida and granulosa cells.

Size: 33 x 22.5 x 21 cm, Weight: 1,4 kg

Uterus model

Price inquiry: +48 605999769, kontakt@openmedis.pl

Product code: MA02655



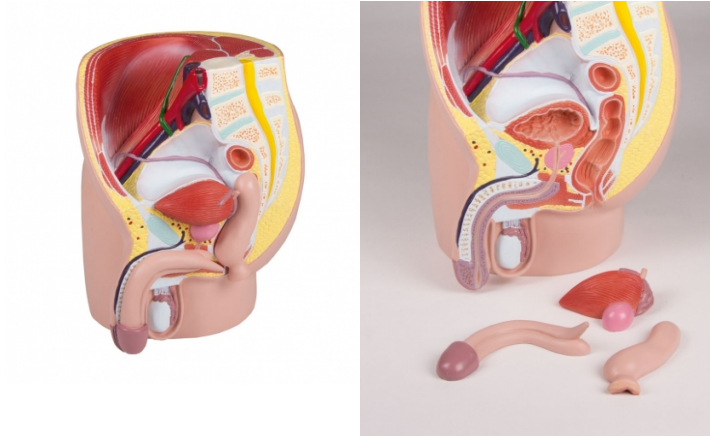
Life size model of a healthy uterus. Anatomy is shown in detail, structures are carefully painted by hand. Cervix, endocervical canal, uterine cavity are sectioned to show endometrium and myometrium. Also one fallopian tube and one ovary are opened, follicles and oogenesis can be seen. An educational card locates the anatomy. Perfect for IUD demonstration. IUD not included On removable stand.

Size: 23 x 16 x 6 cm, weight: 0.5 kg

Male Pelvis, life size, 4-part

Price inquiry: +48 605999769, kontakt@openmedis.pl

Product code: MA00954



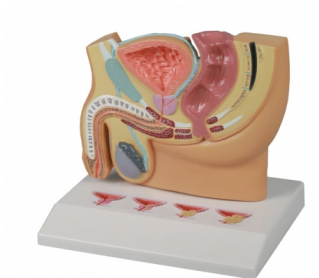
This life size model is median sagittal sectioned and shows the male pelvis in 4 parts. Additional to muscles and vessels of the abdomen it depicts particularly the urogenital organs. Removable are one half of the cavernous body, one half of the bladder with prostate and one half of bowel with rectum.

Size: 21 x 19 x 25 cm, weight: approx. 1 kg

Male Pelvis section with PBH

Price inquiry: +48 605999769, kontakt@openmedis.pl

Product code: MA01090



This model in about half life size shows a sagittal section of a male pelvis. The base shows four cross sections of the prostate gland. One cross section shows a healthy prostate, the others show three stages of Benign Prostatic Hyperplasia (BPH).

Model size: 13 x 16 x 2 cm, base: 13 x 16.5 cm