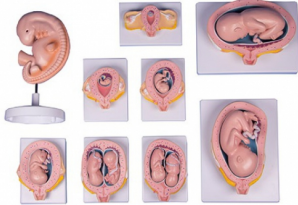


## Pregnancy model set, 9 models

**Price inquiry:** +48 605999769, [kontakt@openmedis.pl](mailto:kontakt@openmedis.pl)

Product code: MA01213



This series was developed in co-operation with a German midwifery school and is composed of 8 life-size models and one enlarged model. It illustrates the human development from the 4th week to the 24th week. All the main anatomical structures of the uterus and embryo/fetus are well represented and explained on the manual.

**The models show:** - Embryo, 4 weeks, enlarged

- Embryo in uterus, 4 weeks
  - Embryo in uterus, 8 weeks
  - Fetus in uterus, 12 weeks
  - Fetus in uterus, 16 weeks
  - Fetus in uterus, transverse presentation, 24 weeks
  - Twins in uterus, 2 separate placentas, 16 weeks
  - Twins in uterus, 1 common placenta, 16 weeks
- Each model is mounted on a removable stand. Some models allow removal of the fetus.

## Fetal doll without placenta

**Price inquiry:** +48 605999769, [kontakt@openmedis.pl](mailto:kontakt@openmedis.pl)

Product code: MA02596



Life-size fetal doll made of fabric (head made of plastic) without placenta.

## Fetal doll with placenta

**Price inquiry:** +48 605999769, [kontakt@openmedis.pl](mailto:kontakt@openmedis.pl)

Product code: MA02595

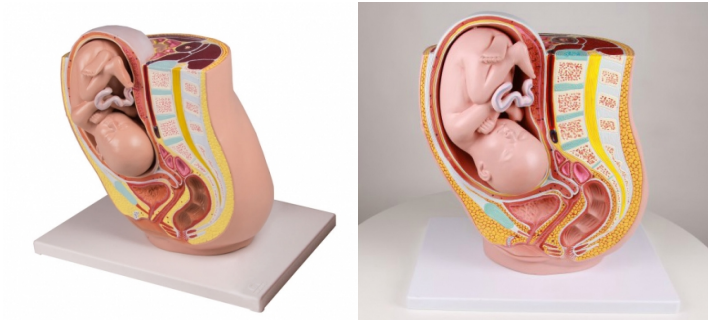


Life-size fetus doll made of fabric (head made of plastic) with placenta.

## **Pregnancy Pelvis with Fetus in the 32nd week of pregnancy, 2 Parts (L220EZ)**

**Price inquiry:** +48 605999769, [kontakt@openmedis.pl](mailto:kontakt@openmedis.pl)

Product code: MA01175



This life size model depicts the female human pelvis in median section with a fetus in the 32nd week of pregnancy. The fetus is in the normal presentation and position. The model depicts graphically the position and relation of fetus and inner organs during normal pregnancy. All anatomical details of pelvis and fetus are depicted. The Fetus is detachable for closer examination. Mounted on base.

## Female pelvis with fetus doll

**Price inquiry:** +48 605999769, [kontakt@openmedis.pl](mailto:kontakt@openmedis.pl)

Product code: MA02544

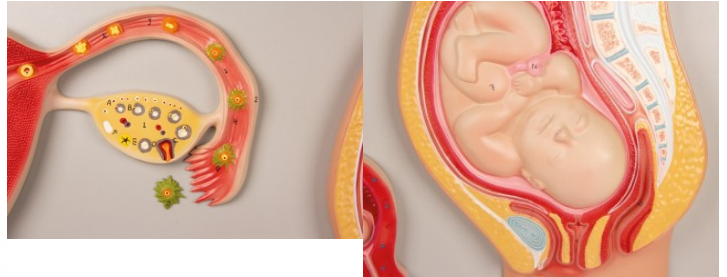


- With foetus doll, umbilical cord, and placenta.
- Natural casting of a female pelvis with life-size foetus doll made of cloth (plastic head).
- Comes in carrying bag.

## Pregnancy model set, 9 models

**Price inquiry:** +48 605999769, [kontakt@openmedis.pl](mailto:kontakt@openmedis.pl)

Product code: MA03816



This model shows the fetal development from the unfertilized egg to the stage of development at the ninth month. The model consists of five parts mounted on a board. The following

stages are shown: ovulation, fertilization, first division of the zygote and implantation in the uterus, fetus at the age of two weeks, eight weeks, twelve weeks and nine months. Model mounted on baseboard. Size: 53 x 38 x 5 cm, weight: approx. 2 kg

## Human Embryo, 4 weeks

**Price inquiry:** +48 605999769, [kontakt@openmedis.pl](mailto:kontakt@openmedis.pl)

Product code: MA01214



This model, about 40 times life size, shows structural details of a human embryo at 4 weeks of development.