

## Male genital organs, 4 part

**Price inquiry:** +48 605999769, [kontakt@openmedis.pl](mailto:kontakt@openmedis.pl)

Product code: MA01592



This life size 4 part model is dissected through the median sagittal plane and provides excellent views of external and internal structures. The removable parts include two halves of the penis, showing medial and transverse sections, and two halves of the male reproductive system with excellent detailing of internal structures.

Size: 14 x 20 x 12 cm, weight: approx. 0.5 kg

## Female Pelvis, life size, 3-part

**Price inquiry:** +48 605999769, [kontakt@openmedis.pl](mailto:kontakt@openmedis.pl)

Product code: MA00955



This life size model is median sagittal sectioned and shows the female pelvis in 3 parts. Additional to muscles and vessels of the abdomen it depicts particularly the urogenital organs. Removable are one half of the uterus, vagina and bladder as well as one half of bowel with rectum.

Size: 22 x 20 x 25 cm, weight: approx. 1 kg

## Female genital organs, 4 parts

**Price inquiry:** +48 605999769, [kontakt@openmedis.pl](mailto:kontakt@openmedis.pl)

Product code: MA00952



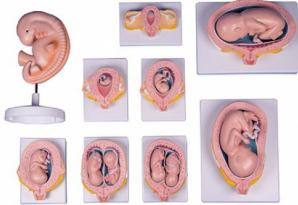
This life size model, composed of 4 parts, is a detailed representation of the female reproductive system as viewed through a median sagittal dissection. Removable parts include a 2-part uterus and two halves of the female reproductive apparatus with details of the internal structure.

Size: 14 x 14 x 12 cm, weight: approx. 0.5 kg

## Pregnancy model set, 9 models

**Price inquiry:** +48 605999769, [kontakt@openmedis.pl](mailto:kontakt@openmedis.pl)

Product code: MA01213



This series was developed in co-operation with a German midwifery school and is composed of 8 life-size models and one enlarged model. It illustrates the human development from the 4th week to the 24th week. All the main anatomical structures of the uterus and embryo/fetus are well represented and explained on the manual.

**The models show:** - Embryo, 4 weeks, enlarged

- Embryo in uterus, 4 weeks
  - Embryo in uterus, 8 weeks
  - Fetus in uterus, 12 weeks
  - Fetus in uterus, 16 weeks
  - Fetus in uterus, transverse presentation, 24 weeks
  - Twins in uterus, 2 separate placentas, 16 weeks
  - Twins in uterus, 1 common placenta, 16 weeks
- Each model is mounted on a removable stand. Some models allow removal of the fetus.

## Cyclical changes in the hormonal balance and the endometrium

**Price inquiry:** +48 605999769, [kontakt@openmedis.pl](mailto:kontakt@openmedis.pl)

Product code: MA02654



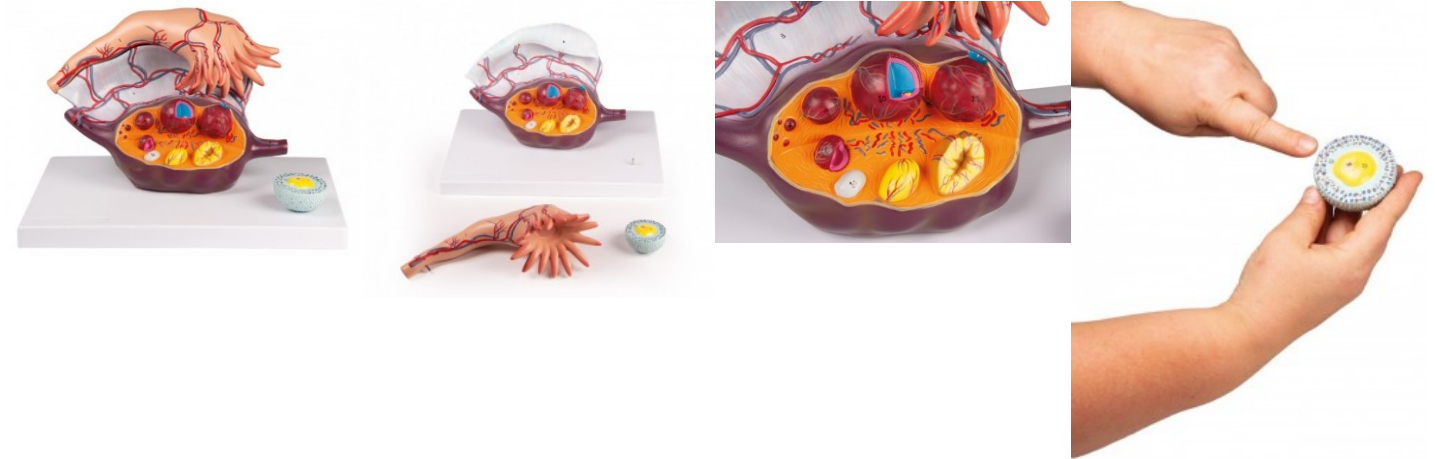
This model shows the cyclical changes in a woman's hormonal balance and their effect on the uterus (the cause of menstruation). Model mounted on the base plate.

Dimensions: 53 x 38 x 5 cm, weight: approx.1.7 kg

## Enlarged Ovary

**Price inquiry:** +48 605999769, [kontakt@openmedis.pl](mailto:kontakt@openmedis.pl)

Product code: MA08103



This 2part, 5times life size model shows the anatomy of the human fallopian tube and ovary. The follicles are shown at different stages of maturation, from the primary follicle to the corpus albicans. A primary follicle is cross-sectioned, to illustrate the inner structure. The oocyte, zona pellucida and granulosa cells.

Size: 33 x 22.5 x 21 cm, Weight: 1,4 kg

## Fetal doll without placenta

**Price inquiry:** +48 605999769, [kontakt@openmedis.pl](mailto:kontakt@openmedis.pl)

Product code: MA02596



Life-size fetal doll made of fabric (head made of plastic) without placenta.

## Fetal doll with placenta

**Price inquiry:** +48 605999769, [kontakt@openmedis.pl](mailto:kontakt@openmedis.pl)

Product code: MA02595



Life-size fetus doll made of fabric (head made of plastic) with placenta.

## Uterus model

**Price inquiry:** +48 605999769, [kontakt@openmedis.pl](mailto:kontakt@openmedis.pl)

Product code: MA02655



Life size model of a healthy uterus. Anatomy is shown in detail, structures are carefully painted by hand. Cervix, endocervical canal, uterine cavity are sectioned to show endometrium and myometrium. Also one fallopian tube and one ovary are opened, follicles and oogenesis can be seen. An educational card locates the anatomy. Perfect for IUD demonstration. IUD not included On removable stand.

Size: 23 x 16 x 6 cm, weight: 0.5 kg

## Uterus with diseases

**Price inquiry:** +48 605999769, [kontakt@openmedis.pl](mailto:kontakt@openmedis.pl)

Product code: MA01091



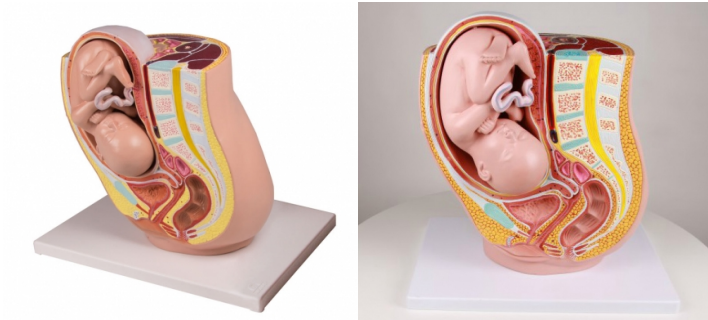
Life size model of an uterus with multiple diseases. It shows endometriosis, cysts, adhesions, fibroma, cervical carcinoma, sarcoma, adenomyosis, polyps and salpingitis. Of course normal anatomy is also represented. It shows vagina, cervix, endometrium, myometrium, endocervical canal, uterine cavity, fallopian tube, ovary, fimbria, follicles and mesosalpinx. An educational card locates the diseases and anatomy. On removable stand.

Size: 23 x 16 x 6 cm, weight: 0.5 kg

## **Pregnancy Pelvis with Fetus in the 32nd week of pregnancy, 2 Parts (L220EZ)**

**Price inquiry:** +48 605999769, [kontakt@openmedis.pl](mailto:kontakt@openmedis.pl)

Product code: MA01175



This life size model depicts the female human pelvis in median section with a fetus in the 32nd week of pregnancy. The fetus is in the normal presentation and position. The model depicts graphically the position and relation of fetus and inner organs during normal pregnancy. All anatomical details of pelvis and fetus are depicted. The Fetus is detachable for closer examination. Mounted on base.

## Female pelvis with fetus doll

**Price inquiry:** +48 605999769, [kontakt@openmedis.pl](mailto:kontakt@openmedis.pl)

Product code: MA02544

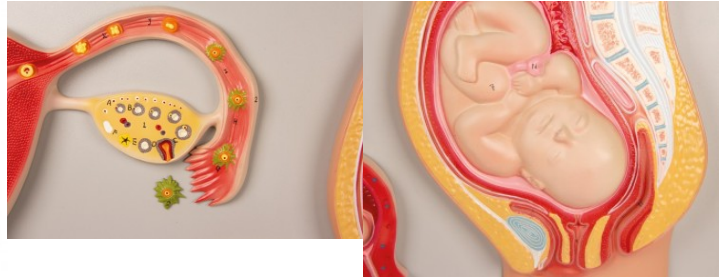
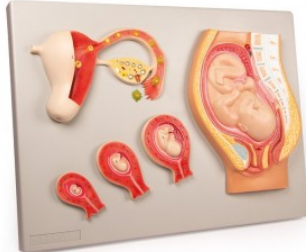


- With foetus doll, umbilical cord, and placenta.
- Natural casting of a female pelvis with life-size foetus doll made of cloth (plastic head).
- Comes in carrying bag.

## Pregnancy model set, 9 models

**Price inquiry:** +48 605999769, [kontakt@openmedis.pl](mailto:kontakt@openmedis.pl)

Product code: MA03816



This model shows the fetal development from the unfertilized egg to the stage of development at the ninth month. The model consists of five parts mounted on a board. The following

stages are shown: ovulation, fertilization, first division of the zygote and implantation in the uterus, fetus at the age of two weeks, eight weeks, twelve weeks and nine months. Model mounted on baseboard. Size: 53 x 38 x 5 cm, weight: approx. 2 kg

## Human Embryo, 4 weeks

**Price inquiry:** +48 605999769, [kontakt@openmedis.pl](mailto:kontakt@openmedis.pl)

Product code: MA01214



This model, about 40 times life size, shows structural details of a human embryo at 4 weeks of development.

## Vulva types with comparative analysis

**Price inquiry:** +48 605999769, [kontakt@openmedis.pl](mailto:kontakt@openmedis.pl)

Product code: MA02195



All vulva models are real organs of real women. Detailed and surprisingly authentic castings show the smallest wrinkles, and in some castings even the opening of the urethra and vagina. The differences between the inner and outer labia and surrounding skin are clearly colored. Because every woman is different, this product is a unique collection of 19 vulvar castings.

**Perfect for sex education:** Anyone who is interested in female anatomy often finds schematic drawings in books that are very different from real anatomy. This often causes confusion, insecurity and even shame in young women and girls who do not have "standard" anatomy, as shown in the books. Each model shows in detail that each vulva is something unique and individual. That is why this collection is a great tool for sex education.

**Skin-friendly silicone material:** The vulva castings are made of high-quality medical, non-toxic, authentically soft and hygienic silicone for cleaning. For this reason, they are ideal for use in classrooms and information centers.

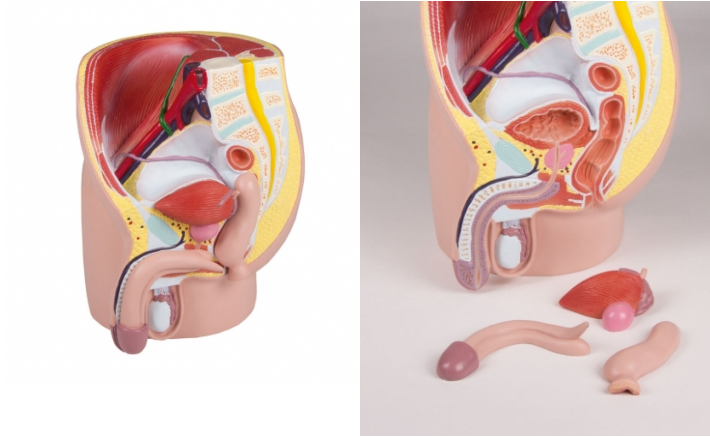
**Specifications:**

- dimensions: 11cm x 8cm (each)
- weight: 0.11 kg (each)

## Male Pelvis, life size, 4-part

**Price inquiry:** +48 605999769, [kontakt@openmedis.pl](mailto:kontakt@openmedis.pl)

Product code: MA00954



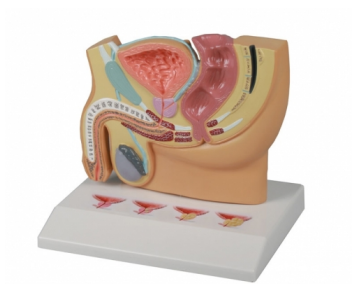
This life size model is median sagittal sectioned and shows the male pelvis in 4 parts. Additional to muscles and vessels of the abdomen it depicts particularly the urogenital organs. Removable are one half of the cavernous body, one half of the bladder with prostate and one half of bowel with rectum.

Size: 21 x 19 x 25 cm, weight: approx. 1 kg

## Male Pelvis section with PBH

**Price inquiry:** +48 605999769, [kontakt@openmedis.pl](mailto:kontakt@openmedis.pl)

Product code: MA01090



This model in about half life size shows a sagittal section of a male pelvis. The base shows four cross sections of the prostate gland. One cross section shows a healthy prostate, the others show three stages of Benign Prostatic Hyperplasia (BPH).

Model size: 13 x 16 x 2 cm, base: 13 x 16.5 cm