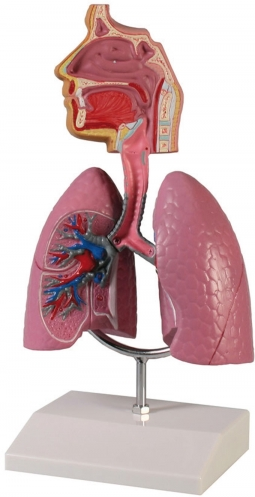


Human Respiratory System

Price inquiry: +48 605999769, kontakt@openmedis.pl

Product code: MA00755



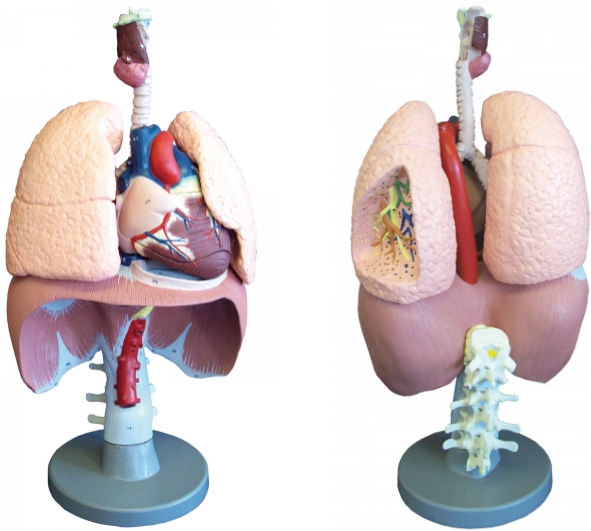
Representation of the human respiratory system in about half life size. Lungs, trachea and upper respiratory tract are shown in detail. The model comes on a removable stand.

Size: 16 x 13 x 28 cm, weight: 0.4 kg

Respiratory organs

Price inquiry: +48 605999769, kontakt@openmedis.pl

Product code: MA00657



An anatomical model showing in detail the elements of the respiratory system in a 1: 1 scale. It also contains three thoracic and 3 lumbar vertebrae. The left lung is presented in cross-section to present bronchioles, pulmonary arteries and veins. The larynx's cross section shows its detailed structure. This model also shows the atria and ventricles of the heart, the main veins - the upper and lower, the aorta, pulmonary artery and coronary sinus.

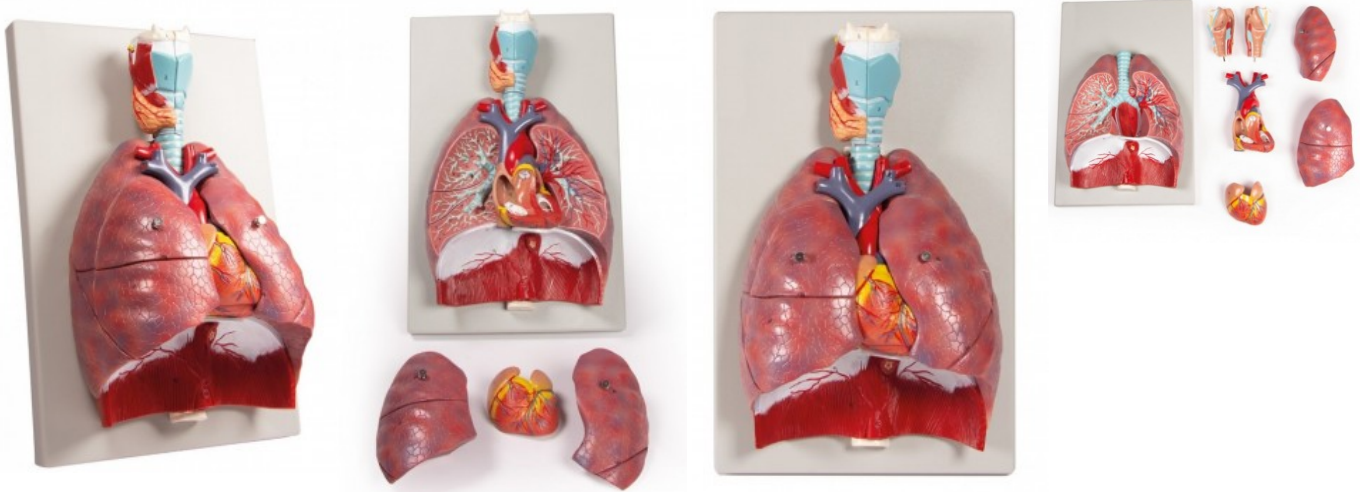
Additional information:

- The model has a base and an instruction.
- Size: 41 x 23 x 19 cm

Model of the cardiopulmonary system

Price inquiry: +48 605999769, kontakt@openmedis.pl

Product code: MA02043



Life-size anatomical model of the entire human respiratory system. It consists of 7 parts representing the larynx (in the sagittal plane); lungs (along the frontal plane); and a two-piece heart. Mounted on the base. The use of didactic colors facilitates learning and speeds up the education process. The model of the respiratory system is an excellent teaching aid for everyone who wants to learn the details of the anatomical structure of the human respiratory organs. The model of the human respiratory system is ideal for learning anatomy at home and during seminar classes at universities or medical schools. The model is manufactured by the German company Erler-Zimmer, the leader of this type of solutions on the global market.

Erler-Zimmer is a recognizable and world-renowned manufacturer of anatomical models, medical simulators and phantoms as well as veterinary models and simulators. For over 70 years it has been operating in the production and distribution of teaching aids in the field of all medical faculties and veterinary medicine. Erler-Zimmer anatomical models are made with the utmost care and from the best quality materials. Many of them are hand-finished, which is why Erler-Zimmer anatomical models are characterized by high accuracy and careful workmanship. Thanks to the use of modern 3D printing technology, Erler-Zimmer has created a unique series of 3D anatomical models. Based on radiological data, a series of models faithfully reflecting the human body was created. These advanced teaching aids are the equipment of anatomical laboratories of many Medical Universities in Poland. It is a modern solution used in many countries around the world.

Advantages of the human respiratory anatomical model:

- Can be divided into individual parts
- Learning the correct anatomy
- Learning the topography and mutual relations of organs
- The individual elements are didactically painted
- Hand-painting
- Assembled and stabilized on the base.
- Size: 26 x 40 x 12 cm, Weight: approx. 1.3 kg

Application of the anatomical model of the human respiratory system:



- Anatomy lab equipment
- Learning anatomy in home and seminar conditions
- The anatomical model can be used to demonstrate the structure of the respiratory system - to patients in office conditions
- As a teaching aid during postgraduate training for doctors, physiotherapists, osteopaths and other medical professions.