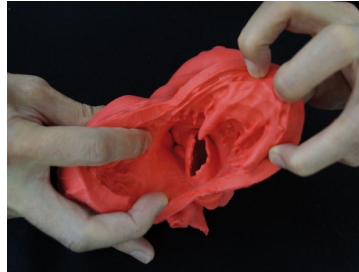


Heart model, flexible, didactical version

Price inquiry: +48 605999769, kontakt@openmedis.pl

Product code: MA01501

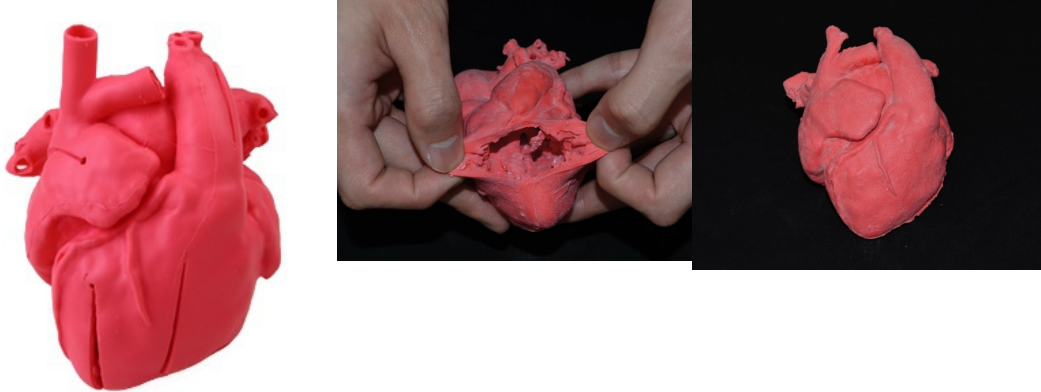


This world-wide unique model is based on CT scan data of a healthy, adult male and is anatomically correct inside and outside. The heart is made of soft and lifelike material. It is pre-cut at different positions to allow easy access to the internal structures. The perfect model for anatomical studies and for explaining the function of the heart.

Pediatric heart with corrected transposition of great arteries and ventricular septal defect (VSD) G570EZ

Price inquiry: +48 605999769, kontakt@openmedis.pl

Product code: MA01497



The pediatric congenital heart disease model is based on actual CT data, and is a precisely produced, urethane based, soft model. This product was created with the intention of being a support tool for doctors performing treatments which require advanced skills and considerable experience.

The parts listed below are reproduced along with disease specific areas:

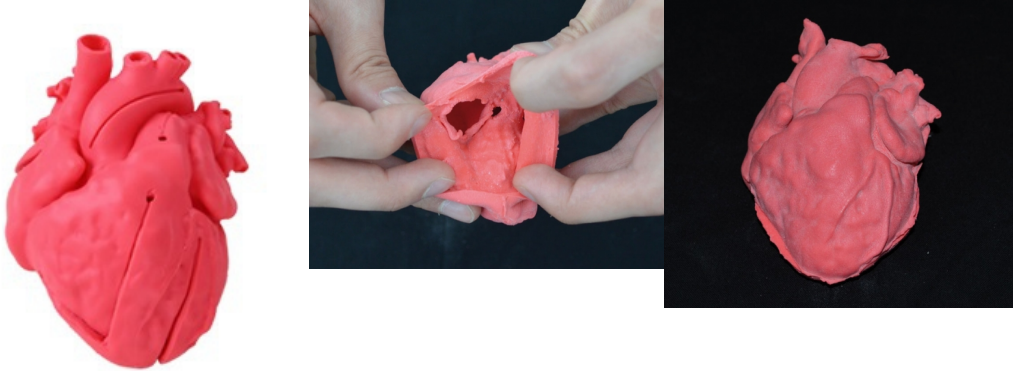
- right ventricle,
- left ventricle,
- right atrium,
- left atrium,
- coronary arteries,
- coronary veins,
- aorta,
- superior vena cava,
- inferior vena cava,
- pulmonary vein,
- mitral valve,
- tricuspid valve,
- aortic valve,
- pulmonary valve,
- papillary muscle
- coronary sinus.

Size: 8.1 x 8.9 x 8.6 cm

Pediatric heart with ventricular septal defect (VSD) G550EZ

Price inquiry: +48 605999769, kontakt@openmedis.pl

Product code: MA00929



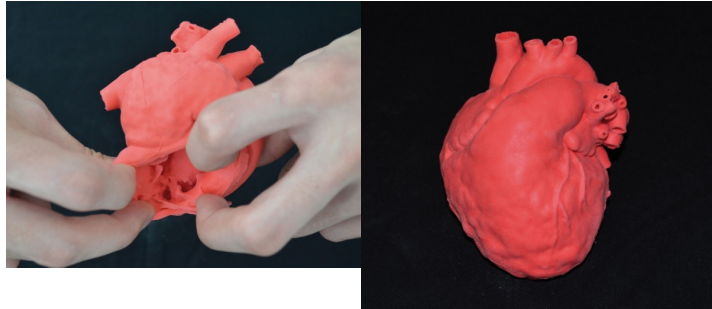
The pediatric congenital heart disease model is based on actual CT data, and is a precisely produced, urethane based, soft model. This product was created with the intention of being a support tool for doctors performing treatments which require advanced skills and considerable experience. The parts listed below are reproduced along with disease specific areas: right ventricle, left ventricle, right atrium, left atrium, coronary arteries, coronary veins, aorta, superior vena cava, inferior vena cava, pulmonary vein, mitral valve, tricuspid valve, aortic valve, pulmonary valve, papillary muscle and coronary sinus.

Size: 7.4 x 7.1 x 6.6 cm

Pediatric heart with atrial septal defect (ASD) G560EZ

Price inquiry: +48 605999769, kontakt@openmedis.pl

Product code: MA01084



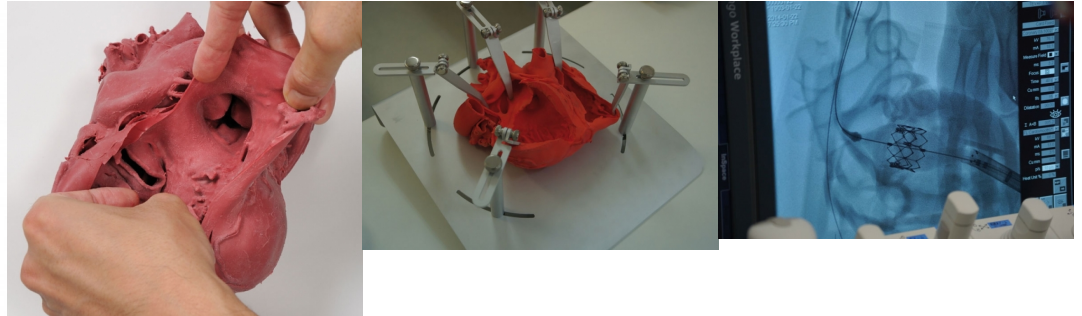
The pediatric congenital heart disease model is based on actual CT data, and is a precisely produced, urethane based, soft model. This product was created with the intention of being a support tool for doctors performing treatments which require advanced skills and considerable experience. The parts listed below are reproduced along with disease specific areas: right ventricle, left ventricle, right atrium, left atrium, coronary arteries, coronary veins, aorta, superior vena cava, inferior vena cava, pulmonary vein, mitral valve, tricuspid valve, aortic valve, pulmonary valve, papillary muscle and coronary sinus.

Size: 7.5 x 8 x 7.4 cm

Heart model, professional

Price inquiry: +48 605999769, kontakt@openmedis.pl

Product code: MA01499



2-times life size heart model is based on CT scan data of a healthy, adult male and is anatomically correct inside and out. Reproduced sections: (external & luminal surfaces) right atrium, left atrium / right ventricle, left ventricle / aorta /superior & inferior vena cava / pulmonary vein / coronary artery, veins (luminal) mitral valve, tricuspid valve, aortic valve, pulmonary valve / papillary muscle / coronary sinus The model is pliable which allows seeing all internal structures. For easy examination a scalpel can be used on the model for opening requested areas.

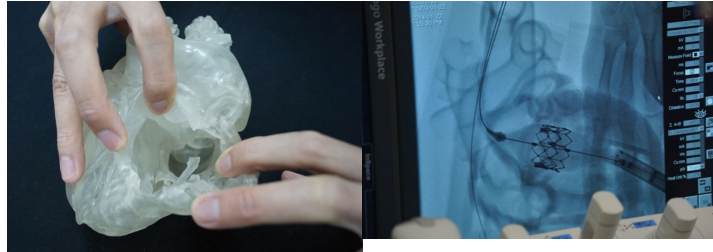
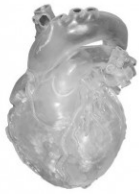
Uses of the model:

- A simulator for practice in coronary artery bypass grafting or other surgery
- A catheterization simulator (coronary arteries not hollow)
- Educational model for learning surgery skills.

Heart model, professional, clear

Price inquiry: +48 605999769, kontakt@openmedis.pl

Product code: MA01498



This 2-times life size heart model is based on CT scan data of a healthy, adult male and is anatomically correct inside and out. Reproduced sections: (external & luminal surfaces) right atrium, left atrium / right ventricle, left ventricle / aorta /superior & inferior vena cava / pulmonary vein / coronary artery, veins (luminal) mitral valve, tricuspid valve, aortic valve, pulmonary valve / papillary muscle / coronary sinus The model is pliable which allows seeing all internal structures.

For easy examination a scalpel can be used on the model for opening requested areas.

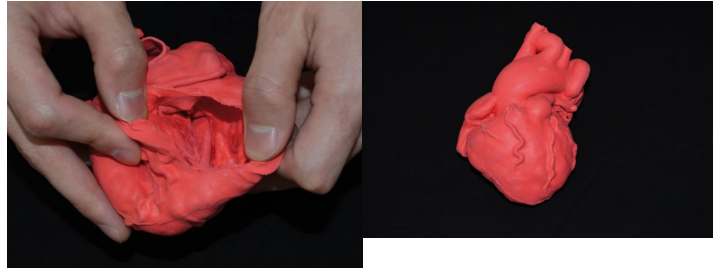
Uses of the model:

- A simulator for practice in coronary artery bypass grafting or other surgery
- A catheterization simulator (Coronary arteries not hollow)
- Educational model for learning surgery skills
- Stent placement

Pediatric heart with tetralogy of Fallot

Price inquiry: +48 605999769, kontakt@openmedis.pl

Product code: MA00926



The pediatric congenital heart disease model is based on actual CT data, and is a precisely produced, urethane based, soft model. This product was created with the intention of being a support tool for doctors performing treatments which require advanced skills and considerable experience. The parts listed below are reproduced along with disease specific areas: right ventricle, left ventricle, right atrium, left atrium, coronary arteries, coronary veins, aorta, superior vena cava, inferior vena cava, pulmonary vein, mitral valve, tricuspid valve, aortic valve, pulmonary valve, papillary muscle and coronary sinus.

Size: 11.1 x 12.3 x 11 cm