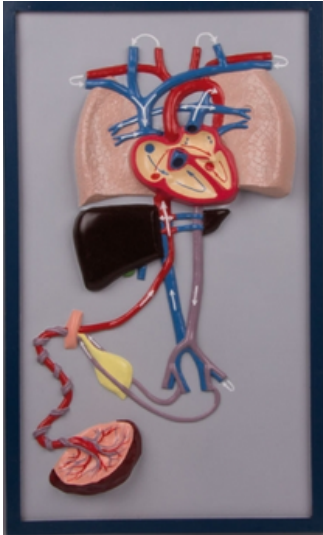


Foetal Circulation

Price inquiry: +48 605999769, kontakt@openmedis.pl

Product code: MA01193

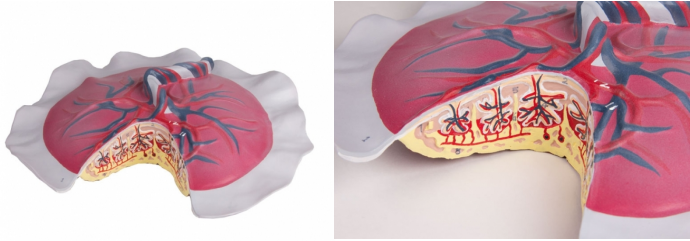


A one piece, half schematic model of the foetal heart, lungs, liver placenta and cord, aorta and vena cava in distinctive colours and marked to show the circulation and direction of flow of the blood.
Mounted on base: 27 x 44 cm

Placental Circulation

Price inquiry: +48 605999769, kontakt@openmedis.pl

Product code: MA01194

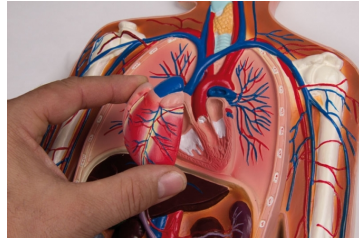


A detailed model, natural-size, showing all the major structures of the placenta in realistic coloring, manufactured in flexible material. The cotyledons on the maternal surface are shown, with the amnion and chorion membranes on the foetal surface. The umbilical vessels can be seen through the membrane of the cord. A section into the placenta exposes the subchorial space, villi with foetal arteries and veins, decidua septa, spiral arterioles and marginal sinus. With key card.

Circulatory System, relief model, 1/2 life size

Price inquiry: +48 605999769, kontakt@openmedis.pl

Product code: MA00927



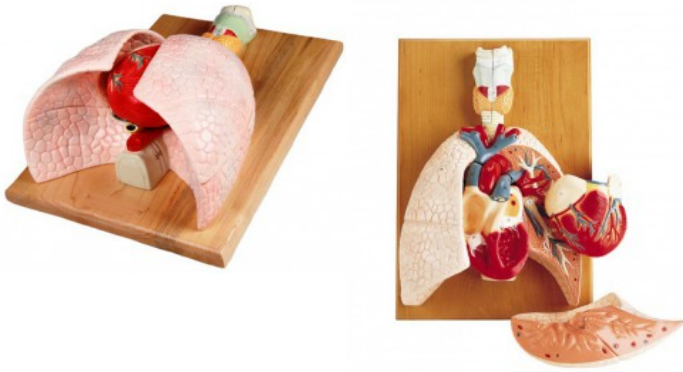
Model of human circulatory system on base basis. Ideal for demonstrating and understanding the mechanism of blood circulation in the human body. The model clearly shows lung circulation, the heart with ventricles, arteries and valves, large vessels and blood supply to the limbs. It also contains internal organs such as the liver, kidneys, spleen and part of the intestine. The anterior wall of the heart can be removed. To locate the vessels, the model shows the skeleton, enabling understanding of the three-dimensional paths of the vessels. Also suitable for hanging.

Size: 90 x 35 x 5 cm

Cardiopulmonary System

Price inquiry: +48 605999769, kontakt@openmedis.pl

Product code: MA00663



This life-size anatomical model shows the lungs, heart, trachea, esophagus, larynx with vocal cords in their natural position. The right half of the larynx can be extended, as well as the heart and half of the left lung, thanks to which the bifurcation of the trachea, bronchial tree, pulmonary arteries and veins can be observed. The heart divides into two halves to show the 4 chambers and valves, and thus provides an understanding of the directional blood flow through the blood vessels and the heart. The pulmonary blood flow can be easily traced thanks to the illustrated main blood vessels. Additional information: The model is delivered with an educational card containing 58 numbered and translated items.

Dimensions: 43x28x15 cm