

Skeleton Hugo with movable spine

Price inquiry: +48 605999769, kontakt@openmedis.pl

Product code: MA01563



This therapy skeleton with a moveable vertebral column is ideal for anyone who not only wants to learn anatomy, but also wishes as a therapist to understand or explain the connections between movements, postures and malpositions.

The model has the following characteristics:

- Natural casting of a human skeleton
- Representation of all anatomical details, fissures, foramina and processes
- Skull can be dismantled in three parts
- Removable arms and legs
- Gliding joints in shoulder, hip and ankle
- Leg can be dismantled at the knee
- Removable foot
- Movable shoulder blades
- 5-leg, safety castor-mounted stand
- Fully moveable vertebral column with flexible intervertebral discs and emerging spinal nerves
- Size: 176 cm,
- Weight: 9.5 kg

"Otto" skeleton model with ligaments

Price inquiry: +48 605999769, kontakt@openmedis.pl

Product code: MA00084



The model has the following features:

- All anatomical details (e.g. holes, slots, joints)
- A natural cast of the human skeleton
 - Skull disassembled into three parts
 - Removable arms and legs
 - Sliding shoulder, hip and ankle joints
 - The leg can be removed at the knee
 - Removable foot
 - Movable blades
 - Stable and safe frame stand
 - The articular ligaments of the knee, hip, elbow and shoulder are shown on one side of the body only

Size with stand: 176 cm, **size without stand:** approx. 165 cm **Weight:** 9.5 kg

Physiotherapy Skeleton with movable spine

Price inquiry: +48 605999769, kontakt@openmedis.pl

Product code: MA00082



This therapy skeleton with a moveable vertebral column is ideal for anyone who not only wants to learn anatomy, but also wishes as a therapist to understand or explain the connections between movements, postures and malpositions.

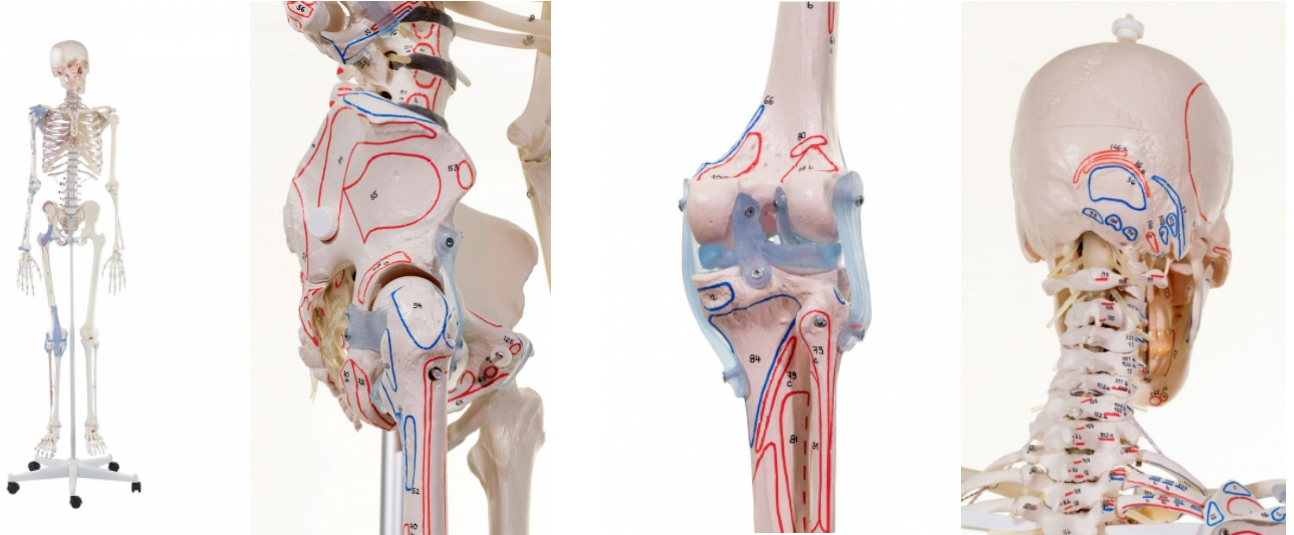
The model has the following characteristics:

- Natural casting of a human skeleton
- Representation of all anatomical details, fissures, foramina and processes
- Skull can be dismantled in three parts
- Removable arms and legs
- Gliding joints in shoulder, hip and ankle
- Leg can be dismantled at the knee
- Removable foot
- Movable shoulder blades
- 5-leg, safety castor-mounted stand
- Fully moveable vertebral column with flexible intervertebral discs and emerging spinal nerves
- Size: 176 cm,
- Weight: 9.5 kg

Skeleton Bert with muscle markings and ligaments

Price inquiry: +48 605999769, kontakt@openmedis.pl

Product code: MA00088



Anatomical skeleton with articular ligaments as well as muscle marking. All anatomical structures and details are represented in detail.

The model has the following characteristics:

- Natural casting of a human skeleton
- Representation of all anatomical details, fissures, foramina and processes
- Skull can be dismantled in three parts
- Removable arms and legs
- Gliding joints in shoulder, hip and ankle
- Leg can be dismantled at the knee
- Removable foot
- Movable shoulder blades
- 5-leg, safety castor-mounted stand
- Articular ligaments of knee, hip, elbow and shoulder on one side
- Marking of muscle origins and insertion points on one body side

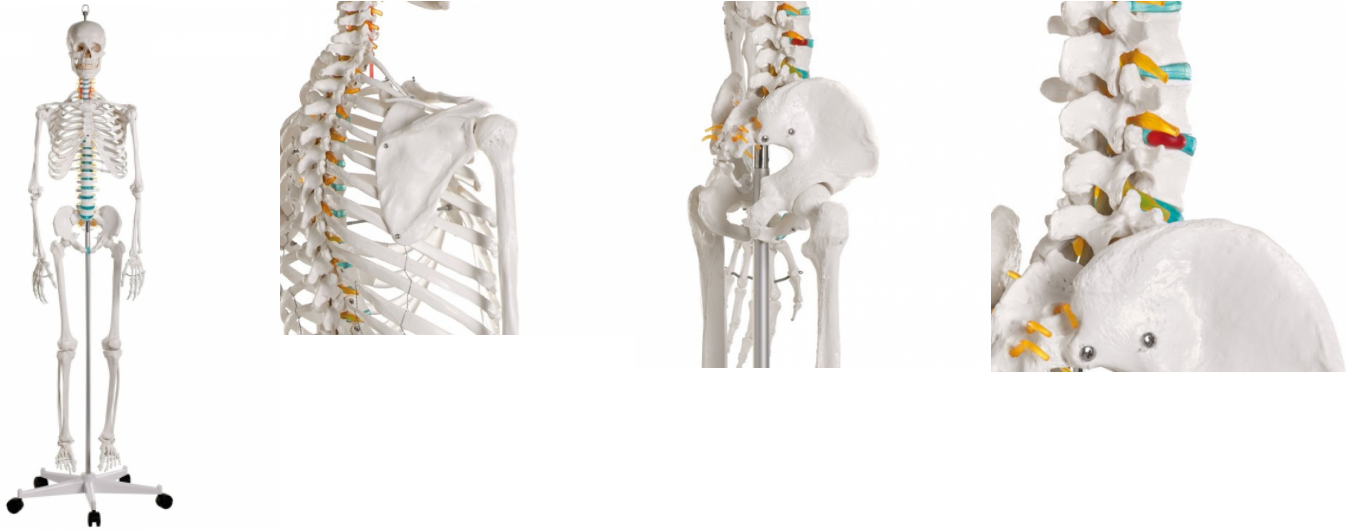
With detailed manual.

- Size: 176 cm,
- weight: 9.5 kg

Didactic skeleton, basic version

Price inquiry: +48 605999769, kontakt@openmedis.pl

Product code: MA00080



School skeleton. A full-size model of the human skeleton intended for educational purposes. It allows you to demonstrate the anatomical structure of the skeletal system, topography of individual bones and their mutual relations. It was designed based on the anatomical structure of the skeleton of an adult male of average height.

Features:

- stable structure of the skeleton placed on a metal rod having a plug-in connection with a 5-inch wheel stand made of durable,
- break-resistant material teeth are a separate element, they are placed in the jaw,
- detachable upper and lower limbs,
- hyoid bone,
- the 3-part skull with the option of detachment from the skeleton, set in a realistic way on the C1-occipital joint,
- the model contains hyoid bone shoulder, hip, knee joints are connected by flexible rubber.
- This is a feature that distinguishes good skeletons with metal joints.
- This makes it possible to present real movable and translational movable property.
- The model contains approximately 200 life-size bones.
- It presents important anatomical structures.
- The model is equipped with a special ring, thanks to which it can be hung if needed. the model is placed on a 5-arm stand.

Additional information:

- Size with stand: 178 cm
- Weight: approx. 9 kg
- Intended for elementary, high schools, colleges and universities as an element of teaching rooms equipment.
- It can be used in medical or rehabilitation rooms as it is ideal for demonstration purposes for patients.



Skeleton Arnold with muscle markings

Price inquiry: +48 605999769, kontakt@openmedis.pl

Product code: MA00086



Anatomical skeleton with muscle marking. All anatomical structures and details are represented in detail.

The model has the following characteristics:

- Natural casting of a human skeleton
- Representation of all anatomical details, fissures, foramina and processes
- Skull can be dismantled in three parts
- Removable arms and legs
- Gliding joints in shoulder, hip and ankle
- Leg can be dismantled at the knee
- Removable foot
- Movable shoulder blades
- 5-leg, safety castor-mounted stand
- Marking of muscle origins and insertion points on one body side
- Size: 176 cm, Weight: 9.5 kg

Skeleton Peter with movable spine and muscle markings

Price inquiry: +48 605999769, kontakt@openmedis.pl

Product code: MA00087



This therapy skeleton offers marking of the muscle origins and insertion points on one body side in addition to the moveable vertebral column.

The model has the following characteristics:

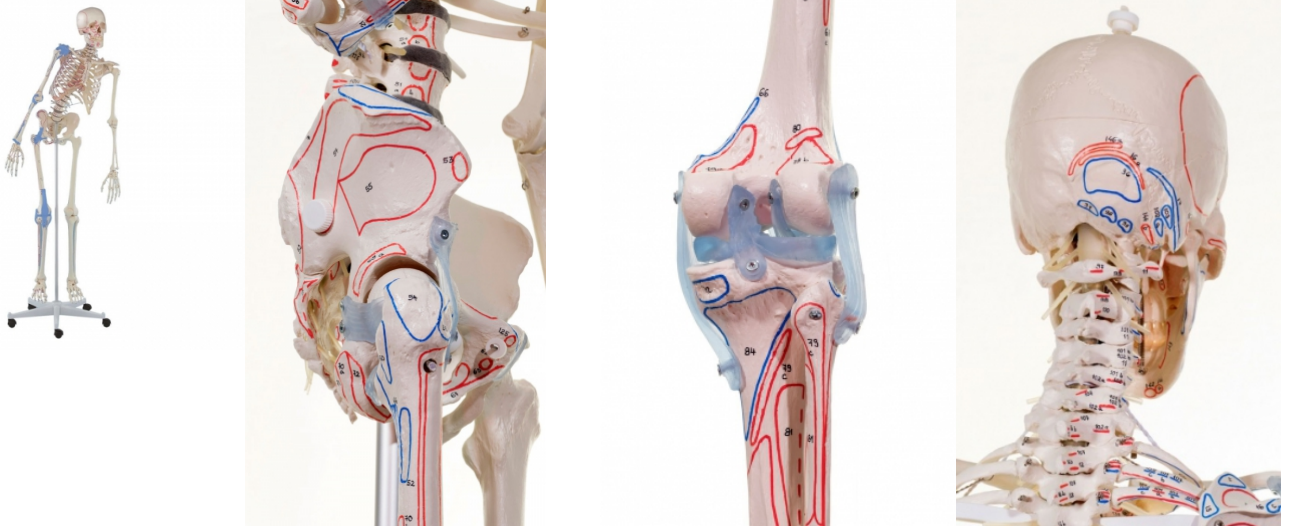
- Natural casting of a human skeleton
- Representation of all anatomical details, fissures, foramina and processes
- Skull can be dismantled in three parts
- Removable arms and legs
- Gliding joints in shoulder, hip and ankle
- Leg can be dismantled at the knee
- Removable foot
- Movable shoulder blades
- 5-leg, safety castor-mounted stand
- Marking of muscle origins and insertion points on one body side
- Fully moveable vertebral column with flexible intervertebral discs and emerging spinal nerves

Size: 176 cm, Weight: 9.5 kg

Skeleton Max with movable spine, muscle markings and ligaments

Price inquiry: +48 605999769, kontakt@openmedis.pl

Product code: MA01347



This therapy skeleton offers marking of the muscle origins and insertion points on one body side in addition to the moveable vertebral column and muscle marking.

The model has the following characteristics:

- Natural casting of a human skeleton
- Representation of all anatomical details, fissures, foramina and processes
- Skull can be dismantled in three parts
- Removable arms and legs
- Gliding joints in shoulder, hip and ankle
- Leg can be dismantled at the knee
- Removable foot
- Movable shoulder blades
- 5-leg, safety castor-mounted stand
- Articular ligaments of knee, hip, elbow and shoulder on one side
- Marking of muscle origins and insertion points on one body side
- Fully moveable vertebral column with flexible intervertebral discs and emerging spinal nerves
- With detailed manual.

Skeleton Toni with movable spine and ligaments

Price inquiry: +48 605999769, kontakt@openmedis.pl

Product code: MA00085



This therapy skeleton offers articular ligaments on one body side in addition to the moveable vertebral column.

The model has the following characteristics:

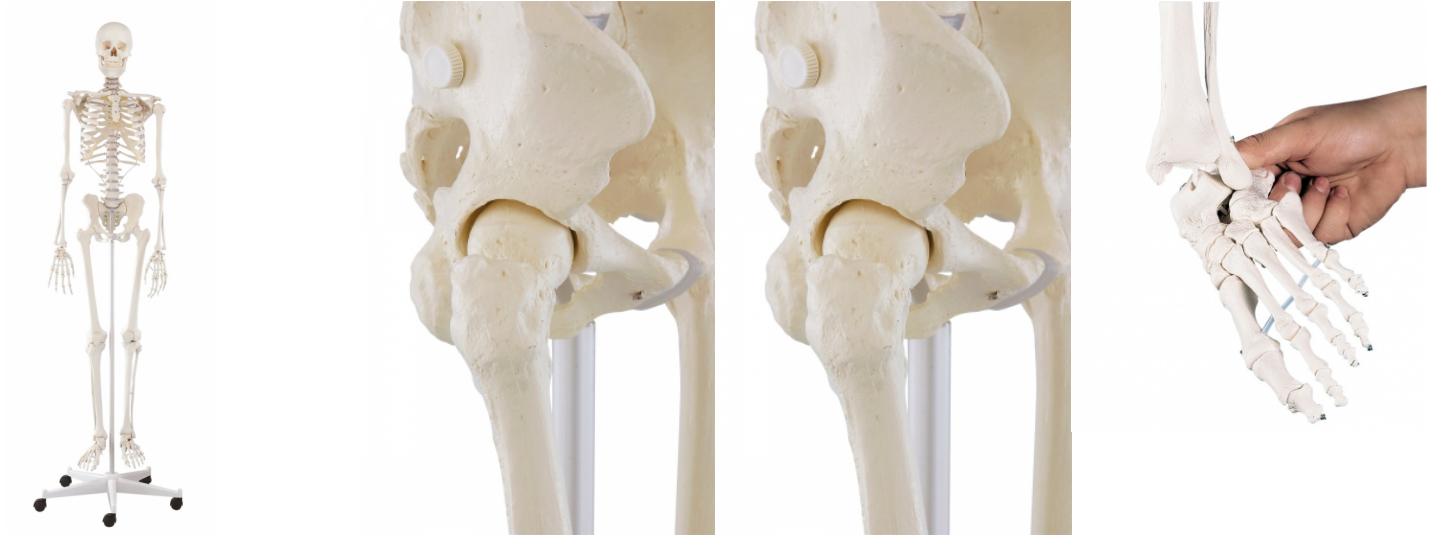
- Natural casting of a human skeleton
- Representation of all anatomical details, fissures, foramina and processes
- Skull can be dismantled in three parts
- Removable arms and legs
- Gliding joints in shoulder, hip and ankle
- Leg can be dismantled at the knee
- Removable foot
- Movable shoulder blades
- 5-leg, safety castor-mounted stand
- Articular ligaments of knee, hip, elbow and shoulder on one side
- Fully moveable vertebral column with flexible intervertebral discs and emerging spinal nerves

Size: 176 cm, weight: 9.5 kg

Skeleton Wili

Price inquiry: +48 605999769, kontakt@openmedis.pl

Product code: MA01633



The ideal model for anatomical study. All details and structures are faithfully reproduced.

The model has the following characteristics:

- Natural casting of a human skeleton
- Representation of all anatomical details, fissures, foramina and processes
- Skull can be dismantled in three parts
- Removable arms and legs
- Gliding joints in shoulder, hip and ankle
- Leg can be dismantled at the knee
- Removable foot
- Movable shoulder blades
- 5-leg, safety castor-mounted stand

Size: 176 cm, Weight: 9.5 kg