

Skeleton Hugo with movable spine

Price inquiry: +48 605999769, kontakt@openmedis.pl

Product code: MA01563



This therapy skeleton with a moveable vertebral column is ideal for anyone who not only wants to learn anatomy, but also wishes as a therapist to understand or explain the connections between movements, postures and malpositions.

The model has the following characteristics:

- Natural casting of a human skeleton
- Representation of all anatomical details, fissures, foramina and processes
- Skull can be dismantled in three parts
- Removable arms and legs
- Gliding joints in shoulder, hip and ankle
- Leg can be dismantled at the knee
- Removable foot
- Movable shoulder blades
- 5-leg, safety castor-mounted stand
- Fully moveable vertebral column with flexible intervertebral discs and emerging spinal nerves
- Size: 176 cm,
- Weight: 9.5 kg

Miniature - Skeleton "Tom"

Price inquiry: +48 605999769, kontakt@openmedis.pl

Product code: MA02182



The model shows a twice-reduced human skeleton. Skulls, arms and legs are removed. In addition, the skull can be divided into three parts.

Specifications:

- dimensions: approx. 84 cm high (without the base)
- weight: approx. 1.8 kg
- delivered based on

Miniature-Skeleton “Daniel” with muscle markings

Price inquiry: +48 605999769, kontakt@openmedis.pl

Product code: MA02185



The model shows a twice-reduced human skeleton. The arms and legs are fully movable, the arms, hips, knees and upper ankles are designed as sliding joints, so you can show all natural movements. The three-part skull, arms and legs are removed, the legs can be removed at the knee and upper ankle. Places of origin of muscles and their attachments are color-coded, numbered and described in the brochure. The model is attached to a tripod and can be easily removed.

Specifications:

- dimensions: 84cm high (without the base)
- weight: approx. 1.2 kg
- delivered based on

Sliding Connections: The shoulder blade and hip are assembled without annoying metal parts and offer the ability to show not only rotational movements, but also sliding movements in the joint. Pond surfaces slide directly on top of each other and allow for the first time to demonstrate all slip and grip options according to manual principles and biomechanics.

Miniature-Skeleton “Paul”, with movable spine

Price inquiry: +48 605999769, kontakt@openmedis.pl

Product code: MA02183



The model shows a twice-reduced human skeleton. The arms and legs are fully movable; shoulders, hips, knees and ankles are mounted as sliding joints to allow natural movement. The three-part skull and the arms and legs are removable. Legs can be detached at the knee and ankle. The spine is movable and allows natural movements.

Specifications:

- dimensions: 84 cm (without base)
- weight: 1.2 kg
- delivered based on

Miniatur-Skelett „Patrick“

Price inquiry: +48 605999769, kontakt@openmedis.pl

Product code: MA02612



A 1/2 life-size scale model of the human skeleton. The arms and legs are fully movable; The arms, hips, knee and ankle are mounted as movable joints to allow for natural movement. The three-part skull as well as the upper and lower limbs are detachable. The legs can be zipped off at the knee and ankle. Size without stand 84 cm. The model can be easily removed from the stand.

Size: 84 cm, weight: 1.2 kg.

"Otto" skeleton model with ligaments

Price inquiry: +48 605999769, kontakt@openmedis.pl

Product code: MA00084



The model has the following features:

- All anatomical details (e.g. holes, slots, joints)
- A natural cast of the human skeleton
 - Skull disassembled into three parts
 - Removable arms and legs
 - Sliding shoulder, hip and ankle joints
 - The leg can be removed at the knee
 - Removable foot
 - Movable blades
 - Stable and safe frame stand
 - The articular ligaments of the knee, hip, elbow and shoulder are shown on one side of the body only

Size with stand: 176 cm, **size without stand:** approx. 165 cm **Weight:** 9.5 kg

Fetus Skeleton, 30. week

Price inquiry: +48 605999769, kontakt@openmedis.pl

Product code: MA01019



A detailed skeleton of a human fetus on the base.

Average body length measurements of this skeleton suggest an age of 8.5 to 9 months, but developmental (non-metric) osteological traits are most suggestive from 7 to 7.5 months. The model is a natural cast. Natural cast. Presents numerous ossification centers. Due to the special dyeing technology, the individual elements of the model look very realistic. Model with limited mobility. It has a tripod.

Height: approx. 40cm.

Child Skeleton, 5 year old

Price inquiry: +48 605999769, kontakt@openmedis.pl

Product code: MA00662



Realistic skeleton of a child aged 5 years.

Characteristic:

- The age of the skeleton is confirmed based on the pattern of eruption (eruption) of teeth and the developmental age of individual bones.
- Reproduction of this skeleton includes all primary and secondary ossification centers that exhibit sufficient morphological detail to be isolated, recognized and identified from an anatomical context.
- The overall shape and configuration of individual bones are within the normal 5-year-old limits.
- **Skull:** The overall shape and configuration of the skull and individual bones are normal - limits for a 5-year-old child. The stitch patterns have a normal configuration. Sutures are palpable in the central areas where primary ossification began on the parietal and frontal parts.
- **Teeth:** the model contains all milk teeth.
- No bone pathology.
- The use of a special staining technique makes the bones look very realistic. Arms and lower limbs have limited mobility. It is possible to dismantle the skull.

Additional information:

- Model supplied with a tripod.
- Height: approx. 95 cm
- Weight: approx. 5 kg

Physiotherapy Skeleton with movable spine

Price inquiry: +48 605999769, kontakt@openmedis.pl

Product code: MA00082



This therapy skeleton with a moveable vertebral column is ideal for anyone who not only wants to learn anatomy, but also wishes as a therapist to understand or explain the connections between movements, postures and malpositions.

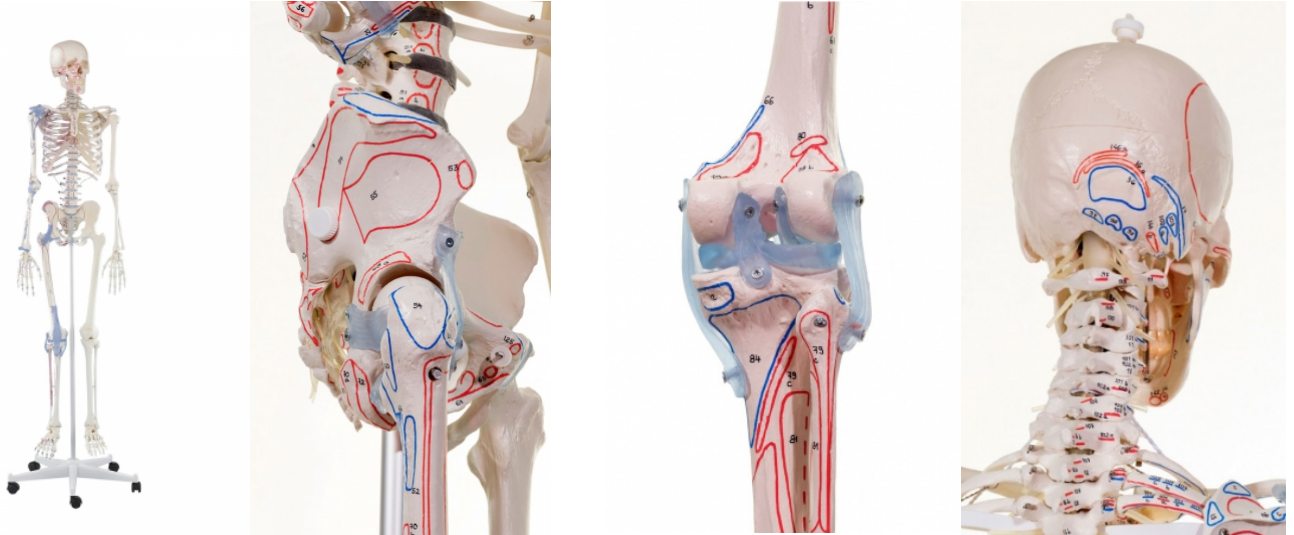
The model has the following characteristics:

- Natural casting of a human skeleton
- Representation of all anatomical details, fissures, foramina and processes
- Skull can be dismantled in three parts
- Removable arms and legs
- Gliding joints in shoulder, hip and ankle
- Leg can be dismantled at the knee
- Removable foot
- Movable shoulder blades
- 5-leg, safety castor-mounted stand
- Fully moveable vertebral column with flexible intervertebral discs and emerging spinal nerves
- Size: 176 cm,
- Weight: 9.5 kg

Skeleton Bert with muscle markings and ligaments

Price inquiry: +48 605999769, kontakt@openmedis.pl

Product code: MA00088



Anatomical skeleton with articular ligaments as well as muscle marking. All anatomical structures and details are represented in detail.

The model has the following characteristics:

- Natural casting of a human skeleton
- Representation of all anatomical details, fissures, foramina and processes
- Skull can be dismantled in three parts
- Removable arms and legs
- Gliding joints in shoulder, hip and ankle
- Leg can be dismantled at the knee
- Removable foot
- Movable shoulder blades
- 5-leg, safety castor-mounted stand
- Articular ligaments of knee, hip, elbow and shoulder on one side
- Marking of muscle origins and insertion points on one body side

With detailed manual.

- Size: 176 cm,
- weight: 9.5 kg

Model of Child skeleton 14 to 16 months old

Price inquiry: +48 605999769, kontakt@openmedis.pl

Product code: MA01020



Model of children's skeleton at the age of 14-16 months.

Characteristics:

- It presents the epiphyses of the long bones and the cartilaginous periphery of many bones characteristic of this stage of development.
- The age for this skeleton was determined using a combination of measurements and landmarks.
- The front seam is almost completely closed.
- The atlas (first cervical vertebrae) consists of three parts, and the turntable (second cervical vertebrae) consists of four parts.
- The other cervical, thoracic and lumbar vertebrae consist of two parts (arch and shaft).
- The first 3 sacral vertebrae consist of 5 parts.
- In the foot, heel bones, talus and cubic bones can be recognized by their shape.

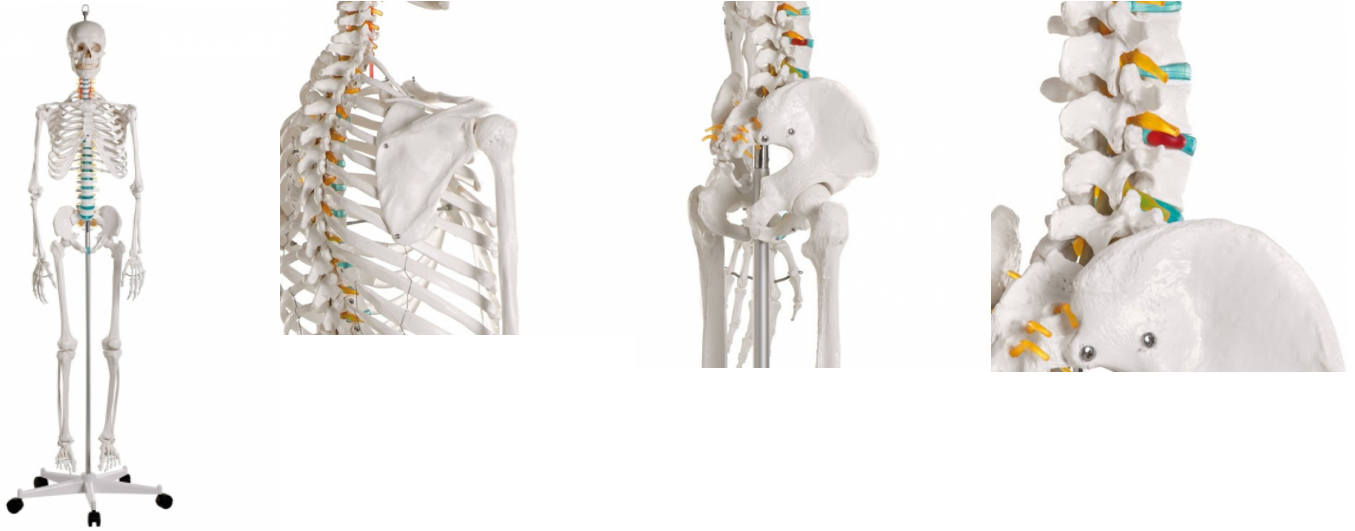
Additional information:

- The articulated skeletons is also equipped with a tripod.
- Height: approx 65cm.

Didactic skeleton, basic version

Price inquiry: +48 605999769, kontakt@openmedis.pl

Product code: MA00080



School skeleton. A full-size model of the human skeleton intended for educational purposes. It allows you to demonstrate the anatomical structure of the skeletal system, topography of individual bones and their mutual relations. It was designed based on the anatomical structure of the skeleton of an adult male of average height.

Features:

- stable structure of the skeleton placed on a metal rod having a plug-in connection with a 5-inch wheel stand made of durable,
- break-resistant material teeth are a separate element, they are placed in the jaw,
- detachable upper and lower limbs,
- hyoid bone,
- the 3-part skull with the option of detachment from the skeleton, set in a realistic way on the C1-occipital joint,
- the model contains hyoid bone shoulder, hip, knee joints are connected by flexible rubber.
- This is a feature that distinguishes good skeletons with metal joints.
- This makes it possible to present real movable and translational movable property.
- The model contains approximately 200 life-size bones.
- It presents important anatomical structures.
- The model is equipped with a special ring, thanks to which it can be hung if needed. the model is placed on a 5-arm stand.

Additional information:

- Size with stand: 178 cm
- Weight: approx. 9 kg
- Intended for elementary, high schools, colleges and universities as an element of teaching rooms equipment.
- It can be used in medical or rehabilitation rooms as it is ideal for demonstration purposes for patients.



Half skeleton, unassembled (bone collection)

Price inquiry: +48 605999769, kontakt@openmedis.pl

Product code: MA02319



All bones on the right side or those occurring once in the skeleton are represented individually. Excellent casting of the skeleton of an adult male. True to life reproduction of the bone structure with all foramina, fissures and processes. The skull can be dismantled in three parts into roof of skull, base of skull and mandible. Not suitable for self-assembly. Supplied in storage carton.

Weight: 5.6 kg

Skeleton cover, white

Price inquiry: +48 605999769, kontakt@openmedis.pl

Product code: MA02591



This dust cover is made of a durable plastic fabric, is tear-resistant and offers very good protection against dust build-up. The cover is simply pulled over the frame and is virtually indestructible as no moving parts such as the zipper can be damaged.

Skeleton, unassembled (bone collection)

Price inquiry: +48 605999769, kontakt@openmedis.pl

Product code: MA00988



All bones in the skeleton are represented individually. Excellent casting of the skeleton of an adult male. True to life reproduction of the bone structure with all foramina, fissures and processes. The skull can be dismantled in three parts into roof of skull, base of skull and mandible. Not suitable for self-assembly. Supplied in storage carton. Weight: 7.3 kg

Miniature-Skeleton “Fred” with movable spine and muscle markings

Price inquiry: +48 605999769, kontakt@openmedis.pl

Product code: MA02184



The model shows a twice-reduced human skeleton. The arms and legs are fully movable, the arms, hips, knees and upper ankles are designed as sliding joints, so you can show all natural movements. The three-part skull, arms and legs are removed, the legs can be removed at the knee and upper ankle. The spine is mounted flexibly so that you can show natural movements but also incorrect positions. In addition, muscle origin and attachment areas are color coded, numbered and described in the brochure. The model is attached to a tripod and can be easily removed.

Specifications:

- dimensions: 84cm high (without the base)
- weight: approx. 1.2 kg
- delivered based on

SLIDING CONNECTIONS

The shoulder blade and hip are assembled without annoying metal parts and offer the ability to show not only rotational movements, but also sliding movements in the joint. Pond surfaces slide directly on top of each other and allow for the first time to demonstrate all slip and grip options according to manual principles and biomechanics.



Tripod lower part (white) for full body skeleton

Price inquiry: +48 605999769, kontakt@openmedis.pl

Product code: MA04028



Tripod suitable for all life-size EZ skeletons, 5-beam WITHOUT tripod tube (outer diameter 18.0 mm).

Skeleton Arnold with muscle markings

Price inquiry: +48 605999769, kontakt@openmedis.pl

Product code: MA00086



Anatomical skeleton with muscle marking. All anatomical structures and details are represented in detail.

The model has the following characteristics:

- Natural casting of a human skeleton
- Representation of all anatomical details, fissures, foramina and processes
- Skull can be dismantled in three parts
- Removable arms and legs
- Gliding joints in shoulder, hip and ankle
- Leg can be dismantled at the knee
- Removable foot
- Movable shoulder blades
- 5-leg, safety castor-mounted stand
- Marking of muscle origins and insertion points on one body side
- Size: 176 cm, Weight: 9.5 kg

Skeleton Peter with movable spine and muscle markings

Price inquiry: +48 605999769, kontakt@openmedis.pl

Product code: MA00087



This therapy skeleton offers marking of the muscle origins and insertion points on one body side in addition to the moveable vertebral column.

The model has the following characteristics:

- Natural casting of a human skeleton
- Representation of all anatomical details, fissures, foramina and processes
- Skull can be dismantled in three parts
- Removable arms and legs
- Gliding joints in shoulder, hip and ankle
- Leg can be dismantled at the knee
- Removable foot
- Movable shoulder blades
- 5-leg, safety castor-mounted stand
- Marking of muscle origins and insertion points on one body side
- Fully moveable vertebral column with flexible intervertebral discs and emerging spinal nerves

Size: 176 cm, Weight: 9.5 kg

Adolescent Skeleton

Price inquiry: +48 605999769, kontakt@openmedis.pl

Product code: MA00661



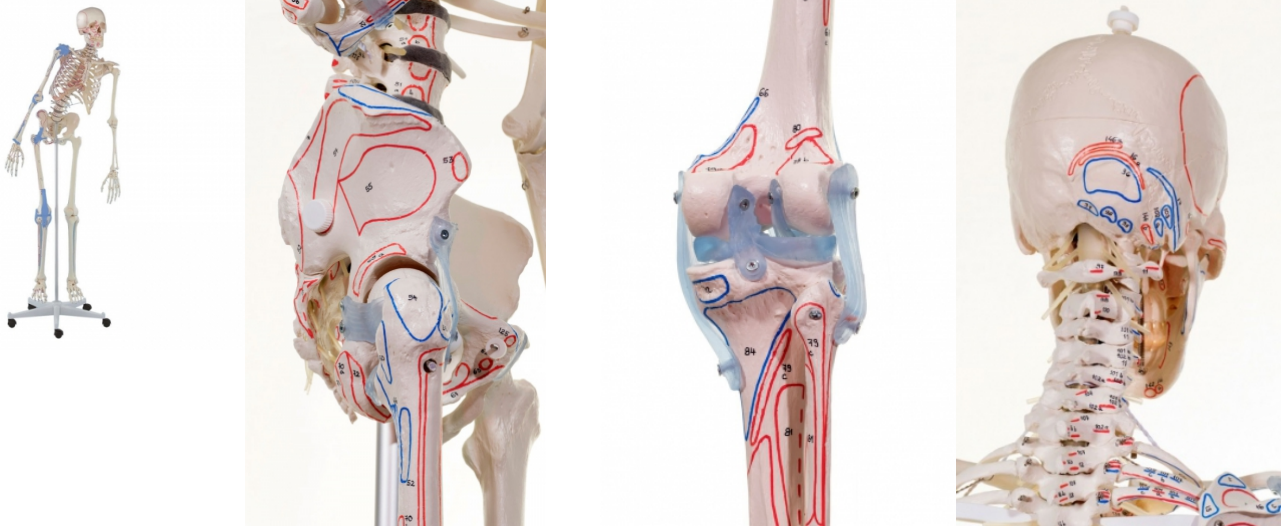
Pristine examples of adolescent skeletons are rare finds in teaching collections. After much searching, we have discovered an excellent example of an adolescent skeleton. The developing skeleton is very different from adult skeletons -- the numerous ossification centers and growth plates can dramatically change the appearance of individual bones. Learning how to assess and gauge the degree of skeletal maturation is a very basic but critical skill for students of anatomy. Thus, having such a specimen available for laboratory teaching purposes is invaluable. Furthermore, as even the busiest forensic osteologists and anthropologists only rarely encounter the skeletonized remains of adolescents, this specimen may serve as a useful reference tool during the evaluation of individual cases. Stand included.

Size: 154 cm

Skeleton Max with movable spine, muscle markings and ligaments

Price inquiry: +48 605999769, kontakt@openmedis.pl

Product code: MA01347



This therapy skeleton offers marking of the muscle origins and insertion points on one body side in addition to the moveable vertebral column and muscle marking.

The model has the following characteristics:

- Natural casting of a human skeleton
- Representation of all anatomical details, fissures, foramina and processes
- Skull can be dismantled in three parts
- Removable arms and legs
- Gliding joints in shoulder, hip and ankle
- Leg can be dismantled at the knee
- Removable foot
- Movable shoulder blades
- 5-leg, safety castor-mounted stand
- Articular ligaments of knee, hip, elbow and shoulder on one side
- Marking of muscle origins and insertion points on one body side
- Fully moveable vertebral column with flexible intervertebral discs and emerging spinal nerves
- With detailed manual.

Skeleton Toni with movable spine and ligaments

Price inquiry: +48 605999769, kontakt@openmedis.pl

Product code: MA00085



This therapy skeleton offers articular ligaments on one body side in addition to the moveable vertebral column.

The model has the following characteristics:

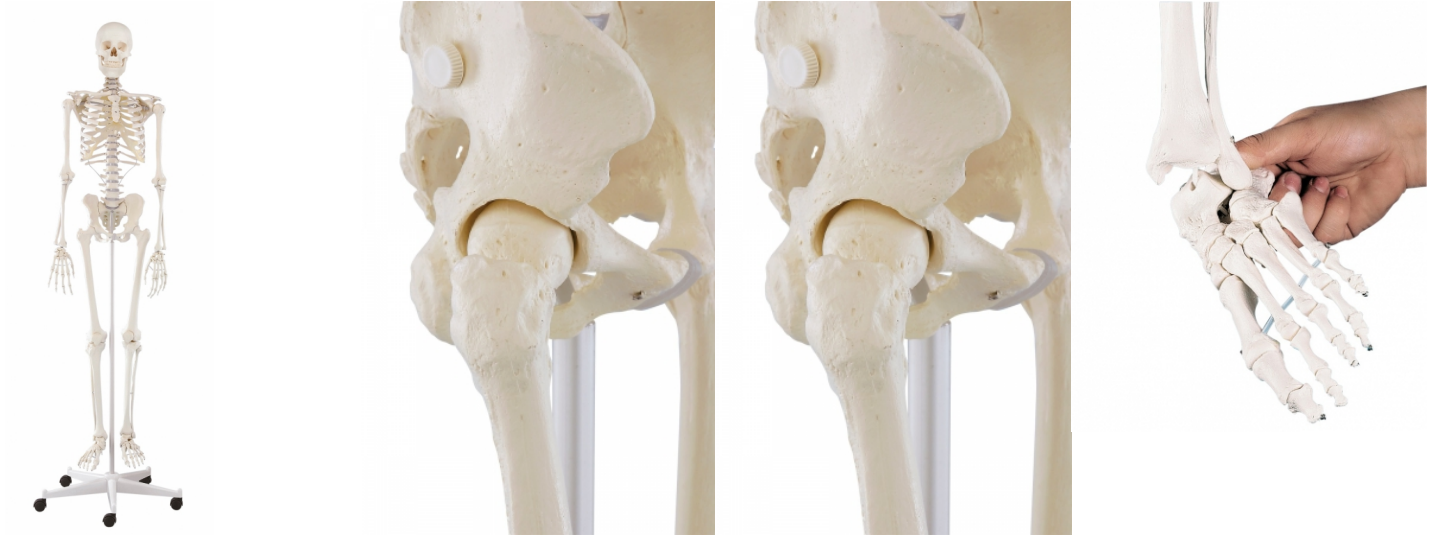
- Natural casting of a human skeleton
- Representation of all anatomical details, fissures, foramina and processes
- Skull can be dismantled in three parts
- Removable arms and legs
- Gliding joints in shoulder, hip and ankle
- Leg can be dismantled at the knee
- Removable foot
- Movable shoulder blades
- 5-leg, safety castor-mounted stand
- Articular ligaments of knee, hip, elbow and shoulder on one side
- Fully moveable vertebral column with flexible intervertebral discs and emerging spinal nerves

Size: 176 cm, weight: 9.5 kg

Skeleton Wili

Price inquiry: +48 605999769, kontakt@openmedis.pl

Product code: MA01633



The ideal model for anatomical study. All details and structures are faithfully reproduced.

The model has the following characteristics:

- Natural casting of a human skeleton
- Representation of all anatomical details, fissures, foramina and processes
- Skull can be dismantled in three parts
- Removable arms and legs
- Gliding joints in shoulder, hip and ankle
- Leg can be dismantled at the knee
- Removable foot
- Movable shoulder blades
- 5-leg, safety castor-mounted stand

Size: 176 cm, Weight: 9.5 kg



A set of artificial human skeleton models for learning anatomy

Price inquiry: +48 605999769, kontakt@openmedis.pl

Product code: MA03904

