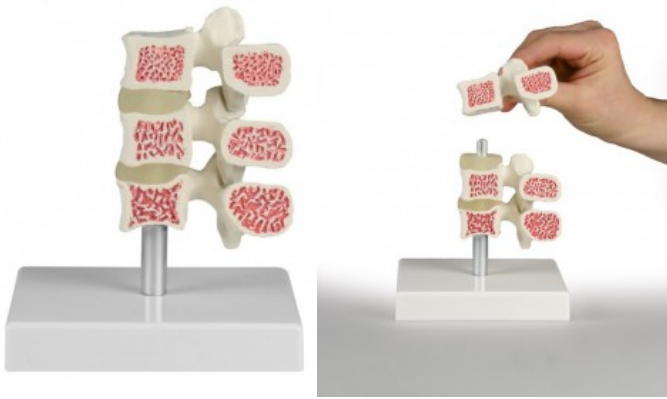


Osteoporosis vertebrae model, 3 vertebrae

Price inquiry: +48 605999769, kontakt@openmedis.pl

Product code: MA02615



This model consists of three medially cut lumbar vertebrae with intervertebral discs. A healthy bone structure is represented on the surface of the upper vertebra and an osteoporotic bone structure on the middle vertebra. The lower vertebra shows osteoporosis at a markedly advanced stage with crushed roof and basal plate (cod fish vertebra). Individually removable from stand.

Size: 16 cm

Osteoporosis vertebra, 2 times life size

Price inquiry: +48 605999769, kontakt@openmedis.pl

Product code: MA02304



This model of a human lumbar vertebra is median sectioned and shows healthy bone structure on one side and osteoporotic bone structures on the other side. The model is assembled magnetically and can easily be removed from the stand.

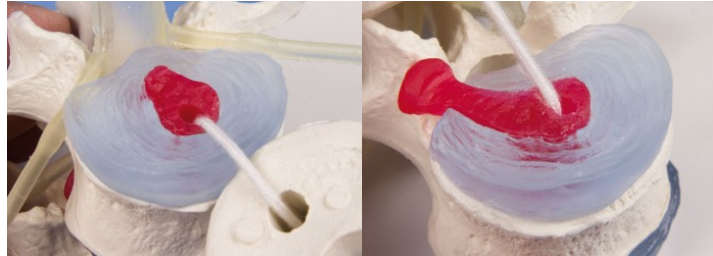
Specifications:

- Size: 13 x 12 x 7 cm
- weight: 0.5 kg

Lumbar vertebrae with prolapsed inter vertebral discs

Price inquiry: +48 605999769, kontakt@openmedis.pl

Product code: MA02305



Model consists 3 lumbar vertebrae with intervertebral discs, spinal cord and emerging spinal nerves. One normal intervertebral disc is supplied, one intervertebral disc with a lateral prolapse and one intervertebral disc with a medial prolapse. The model can be dismantled and the intervertebral discs can be removed for closer study. Natural casting. Without stand.

Vertebra collection, 8 vertebrae with stand

Price inquiry: +48 605999769, kontakt@openmedis.pl

Product code: MA01513



The model presents 8 individual vertebrae of different sections of the spine

The model includes:

- 2 lumbar vertebrae,
- 2 thoracic vertebrae,
- 2 cervical vertebrae
- atlas and axis

All structures, joint surfaces, processes, etc. are recognisable. Model on stand, mounted with intervertebral discs.

Stages of Disc Degeneration

Price inquiry: +48 605999769, kontakt@openmedis.pl

Product code: MA02284



This model consists of 4 vertebrae pairs and shows additionally to the normal condition three different pathologies: slight disc damage, prolapse with bone degeneration and advanced bone and disc degeneration. The vertebrae pairs are mounted magnetically on the plexiglass base and can be easily removed. All vertebrae are flexible mounted which allows demonstration of movements.

Specifications:

- Size: 38 x 10 x 10 cm
- weight: 0.9 kg

Model of the two lumbar vertebrae

Price inquiry: +48 605999769, kontakt@openmedis.pl

Product code: MA02598

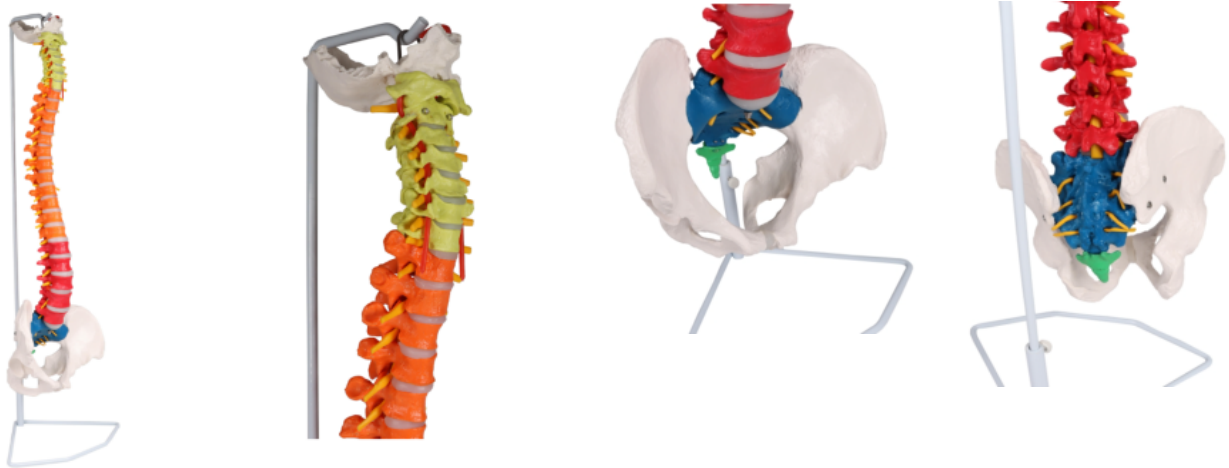


The two lumbar vertebrae with intervertebral discs are flexibly fixed and can be easily removed.

Flexible vertebral column, didactic

Price: 164.82 EUR + shipping cost

Product code: MA03996



A fully flexible life size vertebral column including the occipital plate, cervical, thoracic and lumbar vertebrae, sacrum, coccyx and complete pelvis. Included are the vertebral arteries, spinal nerves and a prolapsed L3-L4 intervertebral disc. The various segments of the spinal column are color coded for ease of identification.

Flexible miniature spine, didactic

Price: 151.29 EUR + shipping cost

Product code: MA03998



This spine model is an advanced tool designed for medical education and patient education, aiming to help users gain a deeper understanding of the structure and function of the human spine.

The spine model is divided into five different sections, each distinguished by different colors, including 7 cervical vertebrae, 12 thoracic vertebrae, 5 lumbar vertebrae, the sacrum, and the coccyx. This color differentiation aids in quickly and accurately locating and explaining key points about the human spine during the teaching process, providing convenience for learning. The model also includes simulations of L3-L4 disc prolapse, spinal nerve exits, and the cervical vertebral artery, facilitating a deeper understanding of spine-related diseases and issues. To enhance the practicality of the model, we've added a male pelvis and movable femur heads. These features comprehensively demonstrate various aspects of the human skeletal system, improving the learning experience. Lastly, our educational spine model is made from high-quality PVC plastic, ensuring durability and resistance to damage. Its texture is clear, and the mold accuracy is high, guaranteeing the accuracy of anatomical structures. In summary, this interactive educational human spine model is an ideal tool for medical professionals, educators, and students. It will contribute to a better understanding and teaching of the anatomy of the human spine, ultimately enhancing the quality of medical education and patient education.

Spine model (miniature)

Price inquiry: +48 605999769, kontakt@openmedis.pl

Product code: MA02535



"Pocket" model of the spine. Perfect for seminars, trips or to the office.

Spine reduced by about half its natural size. All discs are shown separately. Movable model.

Human spine with pelvis and disc hernia

Price inquiry: +48 605999769, kontakt@openmedis.pl

Product code: MA02592



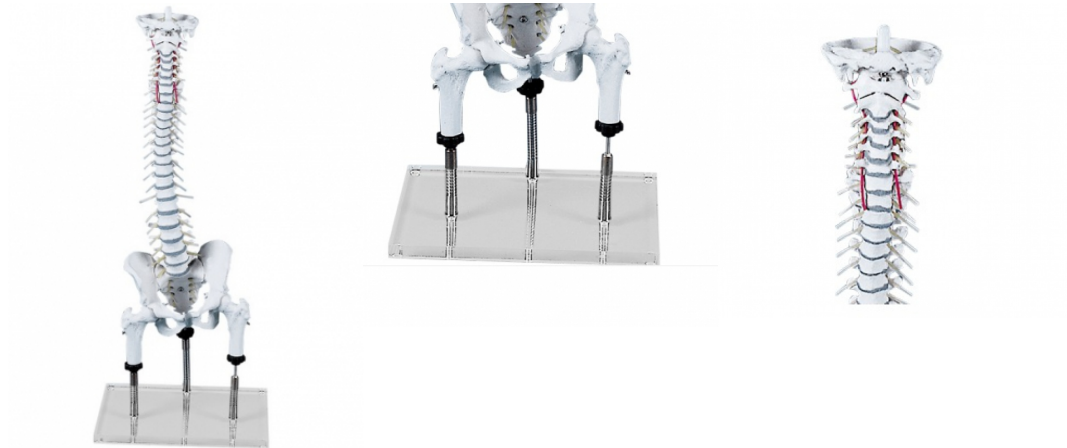
The model shows a natural cast of the human spine of the highest quality with a removable pelvis. The intervertebral discs of this model are made of plastic and show a herniated disc between L2 and L3.

The model is mounted on a movable metal spiral hose, making it extremely flexible and at the same time so durable that it can easily withstand even the most intensive use. Spinal nerves and a vertebral artery are also shown. Version without a tripod.

Vertebral column for demonstration of malpositions

Price inquiry: +48 605999769, kontakt@openmedis.pl

Product code: MA00458



High-quality, natural replica of the human spine with pelvis and femoral bone fragments. A special, flexible tripod enables demonstration of dysfunctions such as:

- shortening of the limb
- pelvic inclination by properly raising or lowering the femur,
- vertebral rotation
- pelvic and spine compensation related to limb shortening.

Main features:

- Intervertebral discs are made of special foam so that they behave like natural so-called "soft disk"
- Individual rings have been mounted on a flexible telescope, which makes this model very durable and at the same time mobile.
- The model also shows spinal nerves and vertebral arteries.

Additional features:

- Height: 78 cm,
- Weight: 4.8 kg
- extreme mobility
- Ideal for orthopedists, physiotherapists, osteopaths, and manual therapists

Spine model for manual therapy

Price inquiry: +48 605999769, kontakt@openmedis.pl

Product code: MA01329



Flexible spine model dedicated to physiotherapists, osteopaths, manual therapists, orthopedists. 1: 1 scale. Possibility to detach the pelvis.

Advantages:

- Special assembly on a flexible metal spiral rod that makes the spine stable and at the same time very flexible.
- The perfect model for anyone who wants to work intensively with the spine for many years.
- Special flexible intervertebral discs behave like natural.
- The model also has spinal nerves and vertebral artery and a base with a tripod. Individual segments of the spine have flexible intervertebral discs made of special foam, which squeeze on one side and expand on the opposite side, as in natural conditions.
- Flexible intervertebral discs prevent an unnatural gap between the vertebral body and the intervertebral disc when the spine is bent.
- All bone parts are cast from the natural spine and show anatomical details such as crevices, appendage holes, furrows, nodules.
- Due to the use of an unbreakable, flexible metal rod, the spine is permanently elastic.
- Flexible intervertebral discs, outgoing spinal nerves and natural motility very well show the interaction between the intervertebral disc, vertebra and nerves.
- The sacrum is movable in a natural range - approx. 2 degrees of mobility.
- The pelvis can be removed.

Destiny:

- This model is ideal for learning anatomy, demonstrating spinal curvatures and scoliosis
- The model is also used in manual therapy for learning research and mobilization in two and three-dimensional bolting.

Additional information:



- It is the best model for anatomy, manual therapy training, patient education and demonstration.
- height: 70 cm
- weight: 1.8 kg
- Highly mobility of the model

Vertebral column with pelvis, didactical coloured (KR4010)

Price inquiry: +48 605999769, kontakt@openmedis.pl

Product code: MA00472



A life-size model of the human spine with a removable pelvis. For better distinction, the individual spine sections - cervical, thoracic and lumbar - are designed in different colors. The model is mounted on a flexible metal spiral rod, which makes the spine stable and at the same time very flexible. The perfect model for anyone who wants to work intensively with the spine for many years. Special flexible intervertebral discs behave like natural. The model also has spinal nerves and vertebral artery and a base with a tripod. Individual segments of the spine have flexible intervertebral discs made of special foam, which squeeze on one side and expand on the opposite side, as in natural conditions. Flexible intervertebral discs prevent an unnatural gap between the vertebral body and the intervertebral disc when the spine is bent. All bone parts are cast from the natural spine and show anatomical details such as crevices, appendage holes, furrows, nodules. Thanks to the use of an unbreakable, flexible metal rod, the spine is permanently elastic. This model is ideal not only for learning anatomy, demonstrating the curvature of the spine and scoliosis, but also for manual therapy for studying research and mobilization in two and three-dimensional bolts. Flexible intervertebral discs, outgoing spinal nerves and natural motility very well show the interaction between the intervertebral disc, vertebra and nerves. The sacrum is movable in a natural range - approx. 2 degrees of mobility. The pelvis can be removed. The compact table stand allows the spine to be left in all natural positions for demonstration purposes. Thanks to the simple plug-in connection, the tripod can be easily attached and removed. It is the best model for anatomy, manual therapy training, patient education and demonstration.

Additional information:

- height: 70 cm
- weight: 1.8 kg
- model with stand
- Highly flexible model

Vertebral column with pelvis, didactical coloured (KR4010/1)

Price inquiry: +48 605999769, kontakt@openmedis.pl

Product code: MA00473



A life-size model of the human spine with a removable pelvis. For better distinction, the individual spine sections - cervical, thoracic and lumbar - are designed in different colors. The model is mounted on a flexible metal spiral rod, which makes the spine stable and at the same time very flexible. The perfect model for anyone who wants to work intensively with the spine for many years. Special flexible intervertebral discs behave like natural. The model also has spinal nerves and vertebral artery and a base with a tripod. Individual segments of the spine have flexible intervertebral discs made of special foam, which squeeze on one side and expand on the opposite side, as in natural conditions. Flexible intervertebral discs prevent an unnatural gap between the vertebral body and the intervertebral disc when the spine is bent. All bone parts are cast from the natural spine and show anatomical details such as crevices, appendage holes, furrows, nodules. Due to the use of an unbreakable, flexible metal rod, the spine is permanently elastic. This model is ideal not only for learning anatomy, demonstrating the curvature of the spine and scoliosis, but also for manual therapy for studying research and mobilization in two and three-dimensional bolts. Flexible intervertebral discs, outgoing spinal nerves and natural motility very well show the interaction between the intervertebral disc, vertebra and nerves. The sacrum is movable in a natural range - approx. 2 degrees of mobility. The pelvis can be removed.

Additional information:

- height: 70 cm
- weight: 1.8 kg
- Highly flexible model

Lumbar spine with pelvis, for demonstration of malpositions

Price inquiry: +48 605999769, kontakt@openmedis.pl

Product code: MA02536



5 lumbar vertebrae with sacrum, additionally with removable pelvis and removable femoral stumps. With flexible stand, allowing demonstration of malpositions e.g. because of one-sided shortening of the leg.

Pelvis, lumbar spine and lumbar muscles

Price inquiry: +48 605999769, kontakt@openmedis.pl

Product code: MA01826



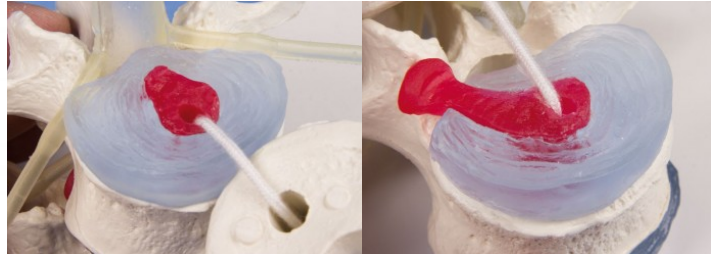
Actual cast of a real human pelvis with lumbar spine. The Spine / Pelvis model is flexible mounted, showing superficial, deeper and deep musculature of the lumbar spine. Additionally with spinal cord and spinal nerves. The hip bones are flexible connected to the sacrum to allow for natural movements. On stand, removable.

Size: 39 x 26 x 21 cm, weight: 1.5 kg

Lumbar vertebrae with prolapsed inter vertebral discs

Price inquiry: +48 605999769, kontakt@openmedis.pl

Product code: MA02306



Model consists 3 lumbar vertebrae with intervertebral discs, spinal cord and emerging spinal nerves. One normal intervertebral disc is supplied, one intervertebral disc with a lateral prolapse and one intervertebral disc with a medial prolapse. The model can be dismantled and the intervertebral discs can be removed for closer study. Natural casting. Without stand.

Model of the spine on a hanging stand - miniature

Price inquiry: +48 605999769, kontakt@openmedis.pl

Product code: MA02593



The model shows the human spine reduced by half and highlights not only all bones, but also the intervertebral discs, spinal nerves and the vertebral artery.

On a removable hanging stand. **Size:** approx. 38 cm, **weight:** 0.3 kg

Cervical vertebral column with stand

Price inquiry: +48 605999769, kontakt@openmedis.pl

Product code: MA01026



A life-size cast showing the thoracic segment of the human spine (from TH1 to TH12), the spinal cord and the outgoing spinal nerves. Demonstrates intervertebral joints formed by the articular processes of the respective vertebrae. Individual elements of vertebral structure and their arrangement are characteristic of the thoracic spine.

Additional features:

- Enables demonstration of the thoracic spine mobility.
- The intervertebral discs are made of a special rubber material.
- With a base

Flexible vertebral column model

Price inquiry: +48 605999769, kontakt@openmedis.pl

Product code: MA01386



A flexible model of vertebral column in life size consisting of the occipital plate:

- cervical,
- thoracic and lumbar vertebrae;
- sacrum; coccyx;]
- complete pelvis.

Features include representations of the vertebral arteries, spinal nerve branches, and a prolapsed L3-L4 intervertebral disc. Mounted on a stand for hanging.

Size: 75cm, weight: approx. 2.5 kg

Spine with stumps and pelvis (without a tripod)

Price inquiry: +48 605999769, kontakt@openmedis.pl

Product code: MA02308



The highest quality natural cast of the human spine with a removable pelvis. The model is mounted on a flexible metal spiral hose, thanks to which the spine is stable and very flexible at the same time. The perfect model for anyone who wants to work intensively with the spine for many years. The solid classic intervertebral discs show a lateral hernia of the vertebra between L2 and L3. Spinal nerves and a vertebral artery are also shown.

Specification:

- removable and movable thigh stumps
- supplied with a tripod
- size without a tripod: 80 cm,
- weight without a tripod: 2.1 kg

Vertebral column with pelvis, femoral stumps and stand

Price inquiry: +48 605999769, kontakt@openmedis.pl

Product code: MA00077



A life-size **model of the human spine** with a removable pelvis and proximal femoral fragments.

Advantages:

- Special assembly on a flexible metal spiral rod that makes the spine stable and at the same time very flexible.
- **The model has proximal fragments of the bones connected to the acetabulum with elastic rubber. Thanks to this, it is possible to present translatory movements in the hip joint, e.g. traction in the axis of femoral neck.**
- The perfect model for anyone who wants to work intensively with the spine for many years.
- Special flexible intervertebral discs behave like natural.
- The model also has spinal nerves and vertebral artery and a base with a tripod. Individual segments of the spine have flexible intervertebral discs made of special foam, which squeeze on one side and expand on the opposite side, as in natural conditions.
- Flexible intervertebral discs prevent an unnatural gap between the vertebral body and the intervertebral disc when the spine is bent.
- All bone parts are cast from the natural spine and show anatomical details such as crevices, appendage holes, furrows, nodules.
- Due to the use of an unbreakable, flexible metal rod, the spine is permanently elastic.
- Flexible intervertebral discs, outgoing spinal nerves and natural motility very well show the interaction between the intervertebral disc, vertebra and nerves.
- The sacrum is movable in a natural range - approx. 2 degrees of mobility.
- The pelvis can be removed.
- The compact table stand allows the spine to be left in all natural positions for demonstration purposes.
- Due to the simple plug-in connection, the tripod can be easily attached and removed.

Destiny:

- This model is ideal for learning anatomy, demonstrating spinal curvatures and scoliosis
- The model is also used in manual therapy for learning research and mobilization in two and three-dimensional bolting.



Additional information:

- It is the best model for anatomy, manual therapy training, patient education and demonstration.
- height: 70 cm
- weight: 1.8 kg model with stand
- Highly mobile model

Vertebral column with thoracic cage

Price inquiry: +48 605999769, kontakt@openmedis.pl

Product code: MA00480



A model of the spine with the chest, occipital bone, vertebral arteries, spinal cord, spinal nerves and movable chest. Intervertebral discs are made of special foam so that they behave like natural. Individual rings have been mounted on a flexible telescope, which makes this model very durable and at the same time mobile. The method of connecting ribs with the sternum and spine allows imitation of natural chest movements as well as the structure and function of the rib-vertebral and rib-sternal joints. The model also allows you to perform asymmetrical movements due to a special combination of the chest with the cartilage of the ribs. This functional model is suitable for physiotherapists, masseurs, music schools and for specialized courses in "first aid".

Additional information:

- Height: approx. 70 cm,
- Weight: 5.3 kg

Vertebral column for demonstration of malpositions

Price inquiry: +48 605999769, kontakt@openmedis.pl

Product code: MA00481



High-quality, natural replica of the human spine with pelvis, chest and femoral bone fragments.

A special tripod enables demonstration of dysfunctions such as:

- shortening of the limb
- pelvic inclination by raising or lowering the femur,
- vertebral rotation pelvic
- spine compensation related to limb shortening.

Intervertebral discs are made of special foam so that they behave like natural. Individual rings have been mounted on a flexible telescope, which makes this model very durable and at the same time mobile. The model also shows spinal nerves and vertebral arteries. The method of connecting ribs with the sternum and spine allows imitation of natural chest movements as well as the structure and function of the rib-vertebral and rib-sternal joints. Ideal for orthopedists, physiotherapists, osteopaths. It is an excellent teaching aid for medical or physiotherapy students, also for music schools. The way the ribs are attached to the shoulder girdle explains the combination of spine and chest movements during breathing and breathing gymnastics.

Additional information:

- Height: 78 cm,
- Weight: 5.8 kg
- Ideal for orthopedists, physiotherapists, osteopaths.
- It is an excellent teaching aid for medical or physiotherapy students

Flexible vertebral column with femur heads

Price inquiry: +48 605999769, kontakt@openmedis.pl

Product code: MA01349



A flexible life size vertebral column consisting of the:

- occipital plate;
- cervical,
- thoracic and lumbar vertebrae;
- sacrum; coccyx;
- complete pelvis with symphysis;
- and removable femur heads.

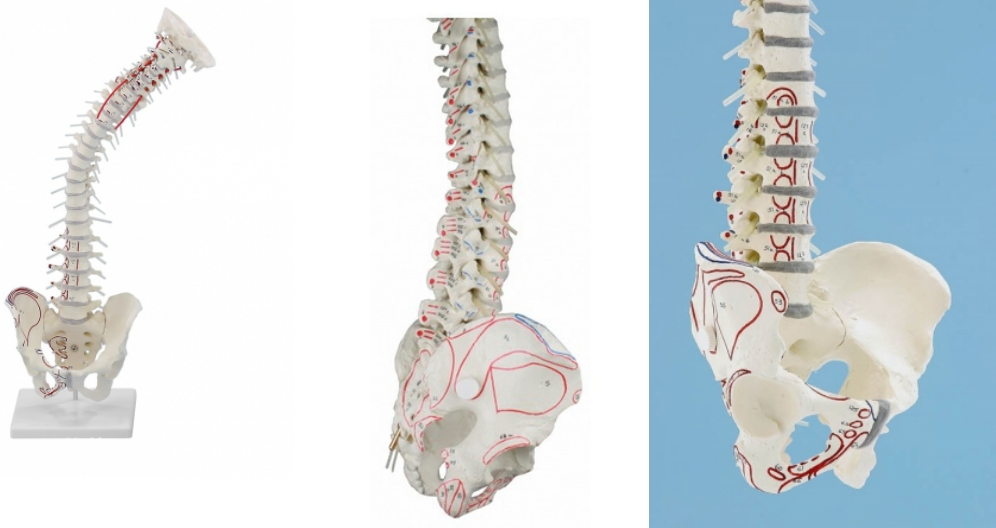
The model also features representations of the vertebral arteries, spinal nerve branches, and a prolapsed L3-L4 intervertebral disc. Mounted on a stand for hanging.

Size: 85 cm, Weight: approx. 2.9 kg

Vertebral column with pelvis, muscle markings and stand

Price inquiry: +48 605999769, kontakt@openmedis.pl

Product code: MA00477



A life-size **model of the human spine** with a **muscle marking**, removable pelvis and stand.

Advantages:

- Special assembly on a flexible metal spiral rod that makes the spine stable and at the same time very flexible.
- **The model has hand-made places of muscle attachments and is delivered with a card containing the nomenclature.**
- The perfect model for anyone who wants to work intensively with the spine for many years.
- Special flexible intervertebral discs behave like natural.
- The model also has spinal nerves and vertebral artery and a base with a tripod. Individual segments of the spine have flexible intervertebral discs made of special foam, which squeeze on one side and expand on the opposite side, as in natural conditions.
- Flexible intervertebral discs prevent an unnatural gap between the vertebral body and the intervertebral disc when the spine is bent.
- All bone parts are cast from the natural spine and show anatomical details such as crevices, appendage holes, furrows, nodules.
- Due to the use of an unbreakable, flexible metal rod, the spine is permanently elastic.
- Flexible intervertebral discs, outgoing spinal nerves and natural motility very well show the interaction between the intervertebral disc, vertebra and nerves.
- The sacrum is movable in a natural range - approx. 2 degrees of mobility.
- The pelvis can be removed.
- The compact table stand allows the spine to be left in all natural positions for demonstration purposes.
- Due to the simple plug-in connection, the tripod can be easily attached and removed.

Destiny:

- This model is ideal for learning anatomy, demonstrating spinal curvatures and scoliosis
- The model is also used in manual therapy for learning research and mobilization in two and three-dimensional bolting.

Additional information:



- It is the best model for anatomy, manual therapy training, patient education and demonstration.
- height: 70 cm
- weight: 1.8 kg model with stand
- Highly mobile model

Vertebral column with pelvis and muscle markings

Price inquiry: +48 605999769, kontakt@openmedis.pl

Product code: MA00607



A life-size **model of the human spine** with a **muscle marking** and removable pelvis.

Advantages:

- Special assembly on a flexible metal spiral rod that makes the spine stable and at the same time very flexible.
- **The model has hand-made places of muscle attachments and is delivered with a card containing the nomenclature.**
- The perfect model for anyone who wants to work intensively with the spine for many years.
- Special flexible intervertebral discs behave like natural.
- The model also has spinal nerves and vertebral artery and a base with a tripod. Individual segments of the spine have flexible intervertebral discs made of special foam, which squeeze on one side and expand on the opposite side, as in natural conditions.
- Flexible intervertebral discs prevent an unnatural gap between the vertebral body and the intervertebral disc when the spine is bent.
- All bone parts are cast from the natural spine and show anatomical details such as crevices, appendage holes, furrows, nodules.
- Due to the use of an unbreakable, flexible metal rod, the spine is permanently elastic.
- Flexible intervertebral discs, outgoing spinal nerves and natural motility very well show the interaction between the intervertebral disc, vertebra and nerves.
- The sacrum is movable in a natural range - approx. 2 degrees of mobility.
- The pelvis can be removed.

Destiny:

- This model is ideal for learning anatomy, demonstrating spinal curvatures and scoliosis
- The model is also used in manual therapy for learning research and mobilization in two and three-dimensional bolting.

Additional information:

- It is the best model for anatomy, manual therapy training, patient education and demonstration.



- height: 70 cm
- weight: 1.8 kg model with stand
- Highly mobile model

Vertebral column with pelvis and femoral stumps

Price inquiry: +48 605999769, kontakt@openmedis.pl

Product code: MA00076



A life-size **model of the human spine** with a removable pelvis and proximal femoral fragments.

Advantages:

- Special assembly on a flexible metal spiral rod that makes the spine stable and at the same time very flexible.
- **The model has proximal fragments of the femur bones connected to the acetabulum with elastic rubber. Thanks to this, it is possible to present translational movements in the hip joint, e.g. traction in the axis of femoral neck.**
- The perfect model for anyone who wants to work intensively with the spine for many years.
- Special flexible intervertebral discs behave like natural.
- The model also has spinal nerves and vertebral artery and a base with a tripod. Individual segments of the spine have flexible intervertebral discs made of special foam, which squeeze on one side and expand on the opposite side, as in natural conditions.
- Flexible intervertebral discs prevent an unnatural gap between the vertebral body and the intervertebral disc when the spine is bent.
- All bone parts are cast from the natural spine and show anatomical details such as crevices, appendage holes, furrows, nodules.
- Due to the use of an unbreakable, flexible metal rod, the spine is permanently elastic.
- Flexible intervertebral discs, outgoing spinal nerves and natural motility very well show the interaction between the intervertebral disc, vertebra and nerves.
- The sacrum is movable in a natural range - approx. 2 degrees of mobility.
- The pelvis can be removed.

Destiny:

- This model is ideal for learning anatomy, demonstrating spinal curvatures and scoliosis
- The model is also used in manual therapy for learning research and mobilization in two and three-dimensional bolting.

Additional information:

- It is the best model for anatomy, manual therapy training, patient education and demonstration.
- height: 70 cm
- weight: 1.8 kg model with stand
- Highly mobile model

Lumbar vertebral column with stand

Price inquiry: +48 605999769, kontakt@openmedis.pl

Product code: MA01027



The presented model is a life-size cast of the lumbar spine of the human spine (from L1 to L5) with the sacrum attached in a way that allows showing the mobility of the lumbar spine. The model also presents outgoing spinal nerves.

Additional features:

- Model on the stand
- The intervertebral discs are made of special elastic rubber

Lumbar spine with pelvis

Price inquiry: +48 605999769, kontakt@openmedis.pl

Product code: MA01028



The anatomical model showing the lumbar spine and pelvis. Everything is placed on a stable base. It is possible to remove the model from the base to present detailed anatomical structures. The intervertebral disks between the individual vertebral bodies are made of elastic rubber thanks. The model also shows the spinal nerves and the hernia of the nucleus pulposus L2-L3. Scale 1:1 (life size)

The model shows:

- 5 lumbar vertebrae with characteristic anatomical structures
- sacrum bone with characteristic anatomical structures
- the pelvis (pubic bone, iliac bone, ischial bone)
- the pubic symphysis
- pubic symphysis disc
- intervertebral discs
- spinal nerves
- hernia of the nucleus pulposus L2-L3

The model is used for educational and demonstration purposes for students and patients in office conditions.

Lumbar spine with pelvis and femoral stumps

Price inquiry: +48 605999769, kontakt@openmedis.pl

Product code: MA01029



Anatomical model of the lumbar spine from L1 to L5 with sacrum, detachable pelvis and femoral fragments. Shows outgoing spinal nerves.

Additional features:

- It is mounted on the base.
- Intervertebral discs made of flexible rubber
- It shows a hernia of the nucleus pulposus

Vertebral column loose on rubber

Price inquiry: +48 605999769, kontakt@openmedis.pl

Product code: MA01031



7 cervical vertebrae, 12 thoracic vertebrae and 5 lumbar vertebrae threaded loosely on rubber. Eminently suited to individual study of the isolated vertebrae with all structures, processes and joint surfaces.

Head articulations, natural size with stand

Price inquiry: +48 605999769, kontakt@openmedis.pl

Product code: MA01032



The presented product is an anatomical model showing the joints of the upper cervical spine:

- atlanto-occipital joint
- atlanto-axial joint
- the joints between the axial (C2) and the third cervical vertebra (C3).

Additional features:

- contains the base
- can be made in two times magnification
- Ideal for manual therapists

Model of the neck and upper spine, enlarged

Price inquiry: +48 605999769, kontakt@openmedis.pl

Product code: MA02614



This doubled model consists of the C3 cervical vertebrae, the C2 axis, the C1 atlas and the occipital segment. Thanks to this model, movements in the upper cervical vertebra can be reproduced realistically and anatomically correct.

Cervical vertebral column with stand

Price inquiry: +48 605999769, kontakt@openmedis.pl

Product code: MA01025



The anatomical model presented here is a life-size cast showing the cervical spine C1 through C7 with the occipital bone flexibly attached, the spinal cord and outgoing spinal nerves. It enables demonstration of cervical spine mobility, shows inter-processual cervical spine joints - ZAP and Luschka's joints.

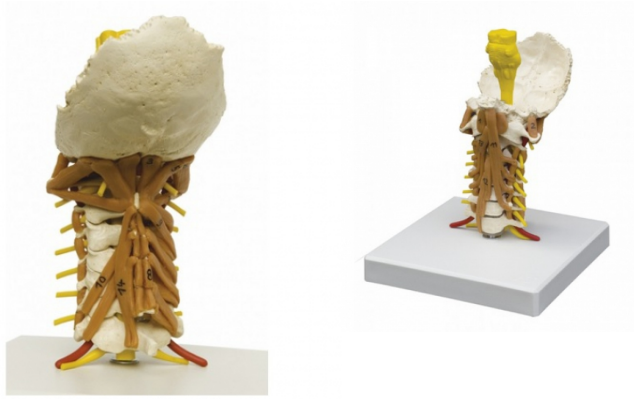
Additional features:

- Model on a stand
- Natural size

Cervical spine with neck musculature

Price inquiry: +48 605999769, kontakt@openmedis.pl

Product code: MA01630



Actual cast of a real human cervical spine, flexible mounted, with occipital bone, vertebral nerves, spinal cord, brain stem and nerve cord. Additionally the muscles of the cervical spine are represented. This cervical spine shows deeper muscle layers. On base.

Model of the three thoracic vertebrae

Price inquiry: +48 605999769, kontakt@openmedis.pl

Product code: MA02599



Three thoracic vertebrae with flexible, easily disassembled intervertebral discs.

Single vertebrae (C1 to L5)

Price inquiry: +48 605999769, kontakt@openmedis.pl

Product code: MA02638



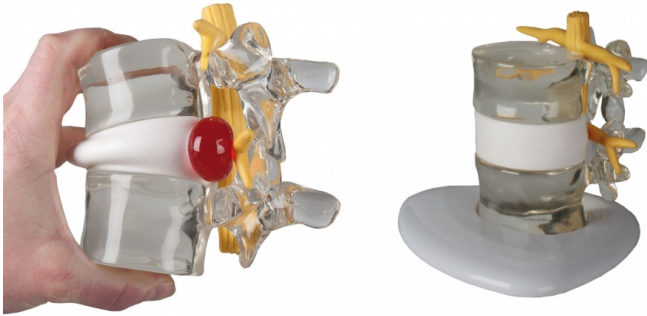
The best quality cast of an adult male bones.

*the price is for one vertebra

Herniated disc simulator

Price inquiry: +48 605999769, kontakt@openmedis.pl

Product code: MA01166



This model of two lumbar vertebrae in about double life size has the opportunity to demonstrate a lateral intervertebral disc hernia. If the two vertebrae are pressed together, the inner core of the disc will be protruding to the outside, forming a hernia. The protruding hernia shows graphically the pressure which affects the spinal nerve. With this helpful tool you can demonstrate fast and easily what happens when a patient suffers from a herniated disc. Because of the enlarged size it is easy to handle and also suitable for group teaching.

Set of eight circles

Price inquiry: +48 605999769, kontakt@openmedis.pl

Product code: MA02600



The kit includes:

- 2 lumbar vertebrae,
- 2 thoracic vertebrae,
- 2 cervical vertebrae
- Atlas and Axis

They are loosely mounted on a rubber, thanks to which we can examine each vertebra in detail. You can see all structures and connection surfaces.