

Skeleton of arm + shoulder girdle + muscle marking

Price inquiry: +48 605999769, kontakt@openmedis.pl

Product code: MA01042



- True to life casting of a skeleton of the human arm.
- The rolling movements of the bones of the lower arm (pronation and supination) and movements of the hand joint can be demonstrated.
- The hand is mobile-mounted on wire.

Skeleton of arm + shoulder girdle + muscle marking

Price inquiry: +48 605999769, kontakt@openmedis.pl

Product code: MA01043



Life-size bone model of the upper limb with muscle attachment markings. It shows the following bones:

- humerus (humerus),
- ulna (ulna),
- radius bone,
- Carpal bones: scaphoid, lunar, triangular, larger four-sided, smaller four-sided, hooked, pea-like.

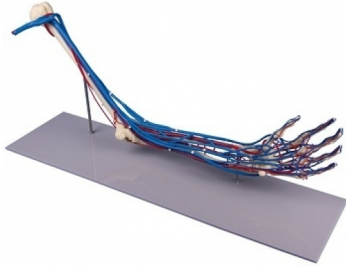
The model makes it possible to perform natural movements in the elbow, radial-wrist and inter-pillar joints. In addition, it allows for demonstration of translational movability needed in manual therapy (traction, compression, slides).

The model has no scapule. The hand is mobile and assembled on a cable. This model is an ideal equipment for doctor's and rehabilitation practice. It serves as educational aid for medical students, participants of manual therapy courses and broadly defined physiotherapy.

Skeleton of arm + shoulder girdle + muscle marking

Price inquiry: +48 605999769, kontakt@openmedis.pl

Product code: MA00493



Life-size upper limb model with blood vessels. The course of the brachial, radial and elbow arteries as well as the adjacent veins are presented. In addition, the model presents the circulatory system of the palm on the crest and palm sides, it contains the actual dimensions of individual vessels.

Additional information:

- model based on
- Size: 66 x 18 x 28 cm

Skeleton of arm + shoulder girdle

Price inquiry: +48 605999769, kontakt@openmedis.pl

Product code: MA00378



A life-size bone model of the upper limb with a shoulder girdle. Thanks to the flexible connection of the humeral head with the acetabulum, the model allows demonstration of translational movements in the shoulder joint (humerus - scapule), as well as techniques of centralization of the humeral head. It allows you to perform natural movements in the shoulder, elbow, radial-wrist and hand joints. The hand is mobile and assembled on a cable.

This model is an ideal equipment for doctor's and rehabilitation practice. It serves as educational aid for medical students, participants of manual therapy courses and other physiotherapy and medicine courses.

Skeleton of arm + shoulder girdle + muscle marking

Price inquiry: +48 605999769, kontakt@openmedis.pl

Product code: MA00490

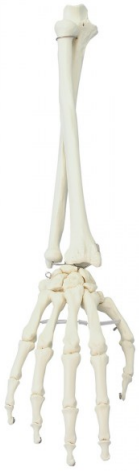


Life-size bone model of the upper limb with shoulder girdle and muscle attachment markings. It presents the following bones: humerus (humerus), ulna (ulna), radius (radius), carpal bones: scaphoid, lunar, triangular, quadrilateral major, quadrilateral minor, hamate, pisiforme, claviule, capitate.

Skeleton of arm + shoulder girdle + muscle marking

Price inquiry: +48 605999769, kontakt@openmedis.pl

Product code: MA01046



Life-size bone model of the hand and forearm. It presents all the bones of the hands: wrist, metacarpus, phalanges. Has the ability to perform translatorial and anatomical movements between individual bones. Additionally, it contains forearm bones. Thanks to the special form of connection, it is possible to demonstrate pronation and supination movements.