

Magnetic hand model

Price inquiry: +48 605999769, kontakt@openmedis.pl

Product code: MA02610



An innovative concept that adds a dynamic element to the study of the anatomy of the hand. Strategically placed magnets help learners understand the complex structures of finger bones and their joints. All bones in this model are disjoint, except for the medial and distal phalanges.

Miniature Shoulder Joint with cross section

Price inquiry: +48 605999769, kontakt@openmedis.pl

Product code: MA01828



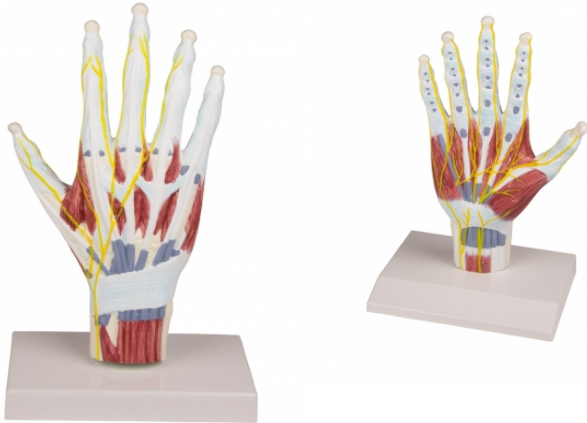
These joint model in about ½ life size shows the structures of the joint as well as the major ligaments. The inner structures can be explained with the cross section mounted on the base of the model.

Size: 12 x 10 x 15 cm, weight: 0.17 kg

Hand anatomy structure model

Price inquiry: +48 605999769, kontakt@openmedis.pl

Product code: MA01047



Life-size anatomical model of the hand. It presents hand-made muscles of the hands, ligaments, nerves, bones and tendons. Made on the basis of. There is a possibility remove the model from the base.

Additional information:

- Size: 14x24x4cm,
- Weight: 570g

Hand and Wrist Model

Price inquiry: +48 605999769, kontakt@openmedis.pl

Product code: MA00489



- Hand and lower arm with representation of the wrist ligaments.
- All bones are individually moulded and mounted on wire. Life size.

Hand anatomical model, 7 parts

Price inquiry: +48 605999769, kontakt@openmedis.pl

Product code: FR02425



The anatomical model of the right human hand is an ideal teaching aid for medical students who want to explore the details of the anatomical structure of the hand. The model is made entirely of artificial material, thanks to which it can be used in ordinary rooms and does not wear out over time, ensuring the same educational conditions all the time. The use of varied colors to paint individual elements adds didactic value to the presented model. The hand model facilitates the study of the topography of the anatomical structures of the hand and the mutual relations between them. Thanks to the use of discreetly hidden magnets, you can easily unfold and fold the model by analyzing the anatomical structure of the hand. The hand model can be disassembled into 7 separate elements. It presents important anatomical structures running within the hand: muscles of the withers, glomerulus, interosseous, ascending muscles, tendons, nerves, blood vessels. In addition, the model has the numbering of individual elements.

Advantages of the human hand anatomical model:

- The hand model can be disassembled into 7 parts
- Diversified colors, thanks to which the individual structures are perfectly exposed
- Learning the topography of anatomical structures of the hand and mutual relations between them
- Structure numbering

Hand model application

- Anatomy lab equipment
- Learning the anatomy of the human hand
- The anatomical model can be used to demonstrate the structure of the human hand - to patients in office conditions
- As a teaching aid during postgraduate training for doctors, physiotherapists, osteopaths and other medical professions.

Specification:



- Size: 11 x 13 x 33 cm
- Weight: 0.5 kg

Hand osteoarthritis model

Price inquiry: +48 605999769, kontakt@openmedis.pl

Product code: MA02645



Life-size right hand with cross-section showing the effects of osteoarthritis, including osteophytes (bone processes), Heberden and Bouchard nodes, and thumb swan deformity. Other anatomy affected by osteoarthritis is also shown: ligaments, tendons, and cartilage. Normal anatomy is also shown for comparison.

Hand model on nylon lines

Price inquiry: +48 605999769, kontakt@openmedis.pl

Product code: MA02293



This hand skeleton is especially suitable for those who wish to examine the bones in detail. Due to the loose nylon mount, the bones can be separated and viewed individually. Nevertheless, they always remain in the hand in the anatomically correct position.

Specification:

- weight: 0.2 kg

Hand with Tendons, Nerves and Carpal Tunnel

Price inquiry: +48 605999769, kontakt@openmedis.pl

Product code: MA01827



Hand with start of lower arm, with Tendons, Carpal Tunnel and Nerves. The skeleton is mounted on wire and is composed of single bones. The model shows the following structures: tendons of flexor digitorum superficialis muscle, tendon of flexor pollicis longus muscle, vagina communis tendinum musculorum flexorum (Common flexor sheath of hand), transverse carpal ligament and median nerve. Life size.

Skeleton of arm + shoulder girdle + muscle marking

Price inquiry: +48 605999769, kontakt@openmedis.pl

Product code: MA01042



- True to life casting of a skeleton of the human arm.
- The rolling movements of the bones of the lower arm (pronation and supination) and movements of the hand joint can be demonstrated.
- The hand is mobile-mounted on wire.

Skeleton of arm + shoulder girdle + muscle marking

Price inquiry: +48 605999769, kontakt@openmedis.pl

Product code: MA01043



Life-size bone model of the upper limb with muscle attachment markings. It shows the following bones:

- humerus (humerus),
- ulna (ulna),
- radius bone,
- Carpal bones: scaphoid, lunar, triangular, larger four-sided, smaller four-sided, hooked, pea-like.

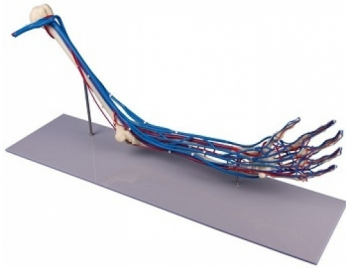
The model makes it possible to perform natural movements in the elbow, radial-wrist and inter-pillar joints. In addition, it allows for demonstration of translational movability needed in manual therapy (traction, compression, slides).

The model has no scapule. The hand is mobile and assembled on a cable. This model is an ideal equipment for doctor's and rehabilitation practice. It serves as educational aid for medical students, participants of manual therapy courses and broadly defined physiotherapy.

Skeleton of arm + shoulder girdle + muscle marking

Price inquiry: +48 605999769, kontakt@openmedis.pl

Product code: MA00493



Life-size upper limb model with blood vessels. The course of the brachial, radial and elbow arteries as well as the adjacent veins are presented. In addition, the model presents the circulatory system of the palm on the crest and palm sides, it contains the actual dimensions of individual vessels.

Additional information:

- model based on
- Size: 66 x 18 x 28 cm

Skeleton of arm + shoulder girdle

Price inquiry: +48 605999769, kontakt@openmedis.pl

Product code: MA00378



A life-size bone model of the upper limb with a shoulder girdle. Thanks to the flexible connection of the humeral head with the acetabulum, the model allows demonstration of translational movements in the shoulder joint (humerus - scapula), as well as techniques of centralization of the humeral head. It allows you to perform natural movements in the shoulder, elbow, radial-wrist and hand joints. The hand is mobile and assembled on a cable.

This model is an ideal equipment for doctor's and rehabilitation practice. It serves as educational aid for medical students, participants of manual therapy courses and other physiotherapy and medicine courses.

Skeleton of arm + shoulder girdle + muscle marking

Price inquiry: +48 605999769, kontakt@openmedis.pl

Product code: MA00490



Life-size bone model of the upper limb with shoulder girdle and muscle attachment markings. It presents the following bones: humerus (humerus), ulna (ulna), radius (radius), carpal bones: scaphoid, lunar, triangular, quadrilateral major, quadrilateral minor, hamate, pisiforme, claviule, capitate.

Skeleton of hand

Price inquiry: +48 605999769, kontakt@openmedis.pl

Product code: MA01044



A life-size anatomical model showing the skeletal structure of the hand. It Shows all palm bones which are individually mobile-mounted on wire
It is possible to perform translational movements in individual hand joints, therefore this model is ideal for learning for future manual therapists. Model without a trip base.

Hand skeleton, block model

Price inquiry: +48 605999769, kontakt@openmedis.pl

Product code: MA02291



Natural, non-movable one-piece casting of a human hand. Representation of all structures and anatomical details.

Skeleton of arm + shoulder girdle + muscle marking

Price inquiry: +48 605999769, kontakt@openmedis.pl

Product code: MA01046



Life-size bone model of the hand and forearm. It presents all the bones of the hands: wrist, metacarpus, phalanges. Has the ability to perform translatorial and anatomical movements between individual bones. Additionally, it contains forearm bones. Thanks to the special form of connection, it is possible to demonstrate pronation and supination movements.

Skeleton of the hand with bone numbering

Price inquiry: +48 605999769, kontakt@openmedis.pl

Product code: MA01045



True to life casting of a skeleton of the human hand. All hand bones are individually mobile-mounted on wire. With additional numbering of the individual hand bones.

Ligamentous apparatus of the wrist

Price inquiry: +48 605999769, kontakt@openmedis.pl

Product code: AM03897



This model shows the wrist and carpal tunnel.

The following ligaments are shown, among others: Retinaculum flexorum, Lig. pisometacarpum, Lig. pisohamatum, Tendo m. flexoris carpi radialis, Lig. ulnocarpale palmare, Lig. radiocarpale palmare, Lig. radiocarpale dorsale, Lig. radioulnare dorsale, Lig. ulnocarpale dorsale, Ligg. carpometacarpalia dorsalia, Ligg. metacarpalia dorsalia.

Shoulder Joint, life size, with muscles

Price inquiry: +48 605999769, kontakt@openmedis.pl

Product code: MA00905



Human shoulder joint in life size with rotator cuff (Supraspinatus, infraspinatus, teres minor, teres major and subscapularis muscle) as well as the biceps brachii tendon. The joint has a limited movability.

With educational card German/English. On Stand.

Size: 17 x 15 x 12 cm, weight: 0.8 kg

Model of Shoulder with Deep Muscle

Price inquiry: +48 605999769, kontakt@openmedis.pl

Product code: MA00907

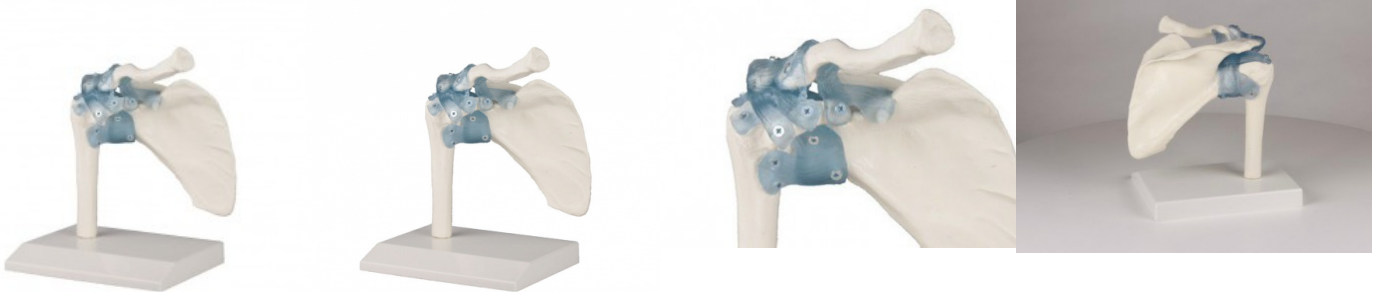


- This model illustrates in great details the muscles, ligament and bones of the shoulder.
- Through different muscles section it is possible to observe the profound musculature as far as to the bone.
- Life size model in on piece.
- Size: 23 x 19 x 11 cm, weight: approx. 0.4 kg

Elbow joint with ligaments with stand

Price inquiry: +48 605999769, kontakt@openmedis.pl

Product code: MA00689



- Natural casting of a human elbow joint.
- Upper arm stump, radius and ulna.
- The ligamentary apparatus and the interosseous membrane are manufactured from elastic material.
- The model allows demonstration of the movements of the elbow joint such as flexion and extension, in addition to the rolling movement of the bones of the lower arm during pronation and supination.
- With removable stand.

Elbow joint with ligaments with stand

Price inquiry: +48 605999769, kontakt@openmedis.pl

Product code: MA00690

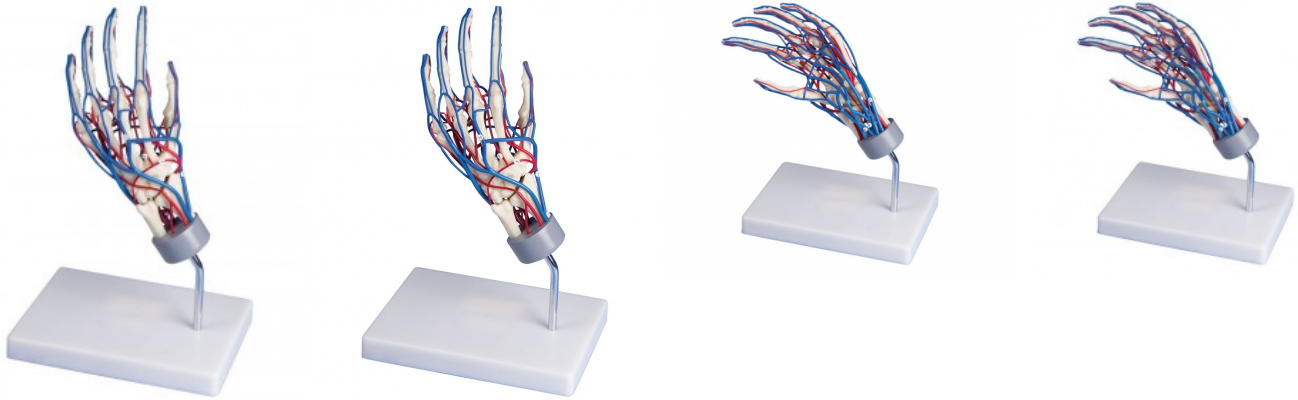


- Natural casting of a human elbow joint.
- Upper arm stump, radius and ulna.
- The ligamentary apparatus and the interosseous membrane are manufactured from elastic material.
- The model allows demonstration of the movements of the elbow joint such as flexion and extension, in addition to the rolling movement of the bones of the lower arm during pronation and supination.
- With removable stand.

Vascular Hand Model

Price inquiry: +48 605999769, kontakt@openmedis.pl

Product code: MA00492



A life-size model showing hand vasculature. Main veins and arteries are shown. The circulatory system is visible on both the dorsal and palm sides of the hand.

Additional information:

- Size 26 x 15 x 22 cm
- Has a base
- It is possible to remove the model from the base