

Skeleton of foot with tibia and fibula insertion, flexible

Price inquiry: +48 605999769, kontakt@openmedis.pl

Product code: MA01054



A life-size elastic model of the human foot with fragments of the lower leg bones. Individual bones have been connected with a special elastic band, which makes this model very mobile. It is a feature that distinguishes this model from other similar products available on the market. Its design also allows for translational and anatomical movements in individual foot joints, and due to the presence of fragments of the lower leg bones, also movements in the upper ankle joint. Anatomical models constructed in such a way are perfect learning aid for physiotherapists, manual therapists, doctors and medical students.

The model presents:

- distal fragments of the lower leg bone (tibia and fibula),
- tarsal bones (talus, heel bone, wedge heel, scaphoid bone, cubic bone),
- bones of metatarsus,
- phalanges

Additional information:

•

the using of special, elastic rubbers as joints of individual bones makes the model highly flexibley.

Foot Anatomy, 9 parts

Price inquiry: +48 605999769, kontakt@openmedis.pl

Product code: MA02426



This 9-piece model shows vital foot structures such as muscles, nerves, blood vessels and ligaments.

Specification:

- Size: 23 x 13 x 10 cm
- Weight: 0.7 kg

Skeleton of foot with tibia and fibula insertion, flexible and numbered

Price inquiry: +48 605999769, kontakt@openmedis.pl

Product code: MA02290



True to life casting of a human foot with tibia and fibular insertion. The foot is movable mounted on rubber and the rolling motion can therefore be demonstrated admirably. With bone numbering.

Muscles and tendons of the foot

Price inquiry: +48 605999769, kontakt@openmedis.pl

Product code: AM03896



This life-size model of a right human foot shows the anatomy of the musculoskeletal system in detail and is a great aid to understanding and learning the function of muscles and ligaments.

Shown are the major ligaments and muscles: Extensor hallucis longus and brevis, Extensor digitorum longus and brevis, Fibularis peroneus tertius and brevis, Fibularis peroneus longus and brevis, Abductor hallucis, Digitorum pedis, Flexor digitorum longus and brevis, Tibialis posterior, Flexor digitorum longus, Flexor hallucis longus and Calcaneus muscle. Lumbricales pedis I-IV, Flexor digiti minimi brevis, Abductor digiti minimi. The following retinacula can be seen in the model: Ret. musculorum extensorum inferius, Ret. musculorum fibularium, Ret. musculorum flexorum.

The muscles and tendons are made of soft material.

Right foot model with magnetic bones

Price inquiry: +48 605999769, kontakt@openmedis.pl

Product code: MA02292



Properly attached magnets help students assemble and understand the complex structures of the bones of the foot and their joints. All bones of this model can be separated, except for the phalanges.

Specification:

- Supplied with base.
- Weight: 0.4 kg

Foot skeleton on Nylon

Price inquiry: +48 605999769, kontakt@openmedis.pl

Product code: MA02289



This foot skeleton is very handy for those who want to study single bones in detail. Because of the loose mounting on nylon wire all bones can be separated and studied individually. Nevertheless they always stay in correct anatomical position within the foot.

Foot skeleton, block model

Price inquiry: +48 605999769, kontakt@openmedis.pl

Product code: MA01055



- Natural one-piece casting of a human foot.
- Representation of all structures and anatomical details.
- Particularly economically priced.

Skeleton of foot with tibia and fibula insertion

Price inquiry: +48 605999769, kontakt@openmedis.pl

Product code: MA01052



- Natural casting of a human foot mounted on wire.
- With tibia and fibula insertion.
- Without stand.

Foot skeleton with ligaments

Price inquiry: +48 605999769, kontakt@openmedis.pl

Product code: MA01490



Life size foot skeleton with representation of the ligamentous apparatus with related muscles. All bones of the foot as well as start of tibia and fibula are represented separately. The following muscles with ligaments are present: Flexor digitorum longus muscle, Posterior tibial muscle, Flexor hallucis longus muscle, Peroneus longus muscle, Peroneus brevis muscle, Extensor hallucis longus muscle, Extensor digitorum longus muscle, Tibialis anterior muscle, Superior fibular retinaculum, Inferior extensor retinaculum of foot, Soleus muscle and Flexor digitorum brevis muscle. With removable stand and Key Card in Latin, German and English.

Skeleton of foot, numbered

Price inquiry: +48 605999769, kontakt@openmedis.pl

Product code: MA01051

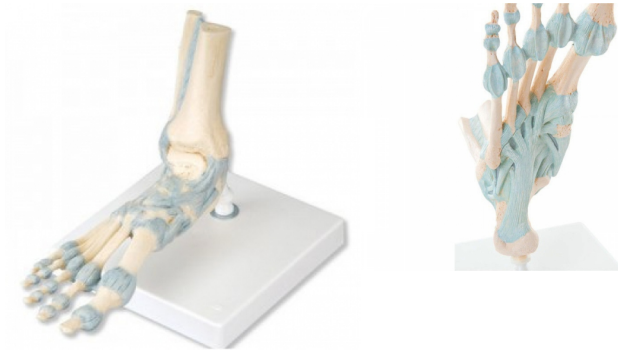


- Natural casting of a human foot. All bones mobile mounted on wire.
- Model as KD6050, but with bone numbering.
- Without stand.

Foot Skeleton Model with Ligaments

Price inquiry: +48 605999769, kontakt@openmedis.pl

Product code: MA01511



This detailed foot skeleton model displays numerous important ligaments and tendons including the Achilles and peroneus longus tendons of the ankle. The foot skeleton consists of the foot bone and lower portions of the tibia and fibula, including the introsseous membrane found between them. All the anatomically important ligaments and tendons of the foot are shown, large and small. This is a high quality anatomical replica of the human foot and ankle. Every original 3B Scientific® Anatomy Model gives you direct access to its digital twin on your smartphone, tablet or desktop device. Enjoy using the exclusive virtual anatomy content with the following features:

- Freely rotate your digital model and zoom in and out
- Display hotspots and their anatomical structures
- Augmented Reality (AR) feature starts your virtual anatomy model
- Anatomy Quiz function to test and improve your anatomical knowledge with instant results and final score evaluation
- Drawing function that allows image customization with save and share function
- Useful Notes function to help you with your personal learning
- Possibility to learn both male and female anatomy
- Easy access to 3D content both online and offline
- Available in 11 languages

To get started, simply scan the QR-code located on your 3B Scientific® Anatomical Model, download the new 3B Smart Anatomy app and step into the virtual world of Human Anatomy. [Click here to learn more.](#)

Skeleton of foot

Price inquiry: +48 605999769, kontakt@openmedis.pl

Product code: MA01050



- Natural casting of a human foot. All bones mobile mounted on wire.
- Without stand.

Skeleton of foot with tibia and fibula insertion, numbered

Price inquiry: +48 605999769, kontakt@openmedis.pl

Product code: MA01053



- Natural casting of a human foot mobile mounted on wire.
- With tibia and fibula insertion.
- Without stand.

Foot skeleton with ligaments

Price inquiry: +48 605999769, kontakt@openmedis.pl

Product code: MA00838

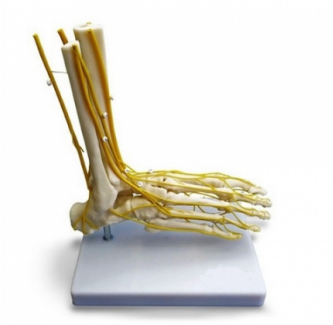


Foot skeleton flexibly mounted on wire. This functional model shows the important ligaments of the foot.
Size: 25 x 8,1 x 20 cm, weight: 0.5 kg

Neuro Foot

Price inquiry: +48 605999769, kontakt@openmedis.pl

Product code: MA00837



- Life size model of the right foot with all major nerves depicted, shown on both dorsal and plantar surfaces.
-

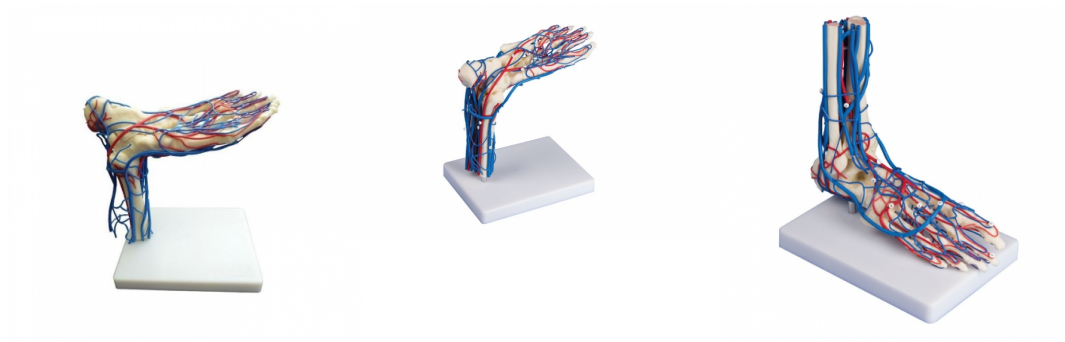
Foot can be removed and placed on the stand upside down to facilitate viewing of the plantar surface.

- Mounted on a stand with keycard.
- Size: 22 x 15 x 25 cm

Vascular Foot

Price inquiry: +48 605999769, kontakt@openmedis.pl

Product code: MA00836



- Life size model of the right foot with all major veins and arteries depicted.
-

The circulatory system is shown on both dorsal and plantar surfaces.

- Foot can be removed and placed on the stand upside down to facilitate viewing of the plantar surface.
- Mounted on a stand.
- Size: 22 x 15 x 25 cm