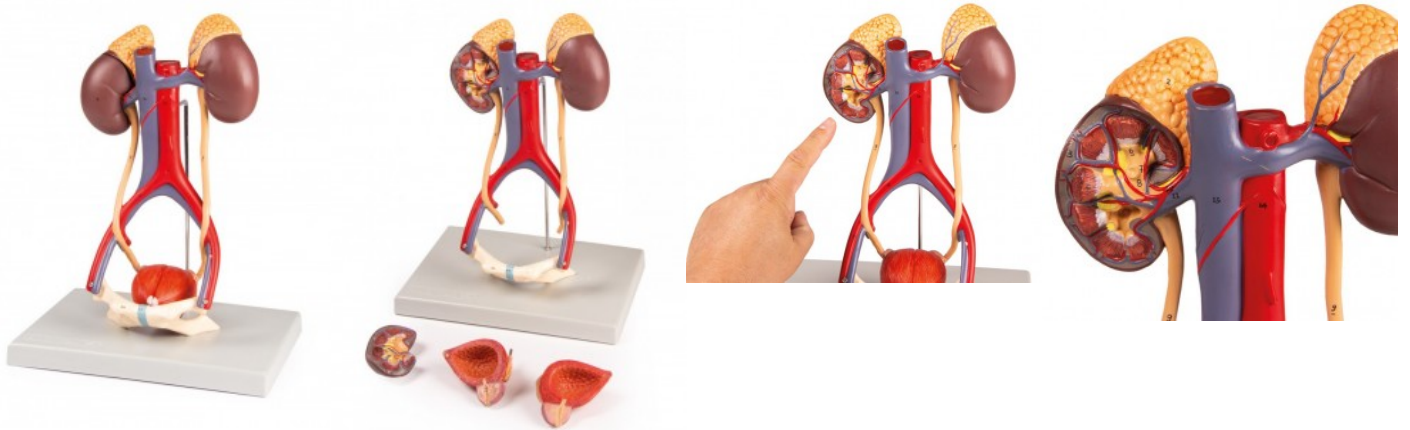


## Model of the urinary system

**Price inquiry:** +48 605999769, [kontakt@openmedis.pl](mailto:kontakt@openmedis.pl)

Product code: MA02589



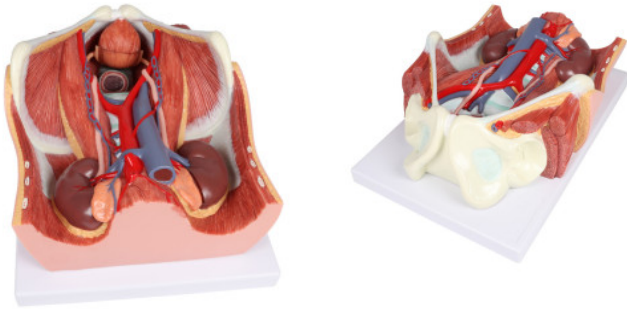
This 5 piece life-size model shows the most important components of the urinary tract, as well as the vena cava and abdominal aorta. The right kidney is open and shows the renal cortex, the renal medulla, the pyramids, the calyces, the renal pelvis, and the accesses of the renal vessels. The bladder can be opened. In the center are the mucosa, bladder triangle, urethra, seminal vesicles, ejaculation duct and vas deferens.

**Dimensions:** 24.5 x 18 x 36 cm, **weight:** 0.7 kg

## Urinary system, dual sex, 6-part

Price: 343.17 EUR + shipping cost

Product code: MA04007



This dual-sex Urinary System all-in-one model provides a comprehensive view of the urinary system, highlighting the structures of the retroperitoneal cavity, the large and small pelvis with bones and muscles, the inferior vena cava, the aorta with its branches, including the iliac vessels, the upper urinary tract, the rectum, and the kidney with the adrenal gland. Notably, one front half of a kidney is removable for detailed examination. With interchangeable male and female inserts (bladder and prostate for males, bladder, womb, and ovaries for females), this anatomical model serves as an invaluable teaching tool, making it an ideal resource for educational purposes. The model is conveniently mounted on a baseboard for easy display and study.