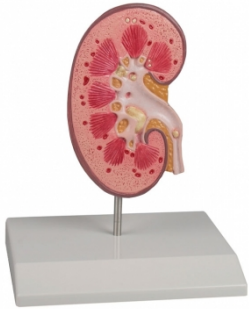


## Kidney Stone Model

**Price inquiry:** +48 605999769, [kontakt@openmedis.pl](mailto:kontakt@openmedis.pl)

Product code: MA01085



This model is designed to inform patients about urinary stones (urolithiasis) and kidney stones (nephrolithiasis). A right kidney in natural size is opened to show the internal structures. The renal pelvis, the renal calices and the ureter are opened to show concretions and stones in the following locations which are typical:

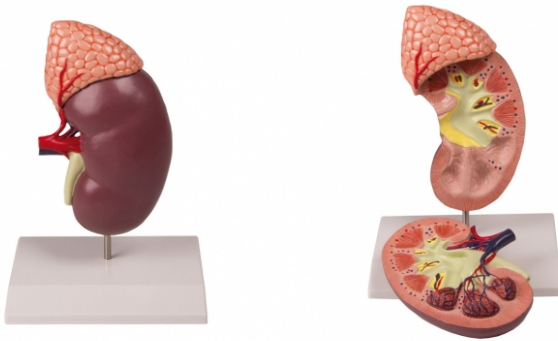
- origin of the upper calix group
- connecting tubule of the lower calyx group, resulting in congestion of the minor calices
- renal cortex
- ureter
- renal pyramids

Mounted on base.

## Kidney with Adrenal Gland, 2 times enlarged, 2-part

**Price inquiry:** +48 605999769, [kontakt@openmedis.pl](mailto:kontakt@openmedis.pl)

Product code: MA00933



This 2-part model shows the human kidney in about double life size. It shows internal structures including cortex, medulla, pyramids, calyces, renal pelvis, ureter and origins of the renal artery and vein. The front of the model is removable for inner examination. Mounted on stand.

Size: 19 x 12 x 7 cm, weight: 0.4 kg

## Kidney model

**Price inquiry:** +48 605999769, [kontakt@openmedis.pl](mailto:kontakt@openmedis.pl)

Product code: MA00932



This model of a human kidney in almost life size shows hand painted details of renal pelvis, renal medulla, renal calyx, renal cortex, renal artery and vein, ureter and adrenal gland. With educational card and stand.

Size: 10 x 6 x 4 cm

Weight: 0.2 kg

## Kidney model, 2 times life size

**Price inquiry:** +48 605999769, [kontakt@openmedis.pl](mailto:kontakt@openmedis.pl)

Product code: MA01546



This model of a human kidney in about 2 times life size shows hand painted details of renal pelvis, renal medulla, renal calyx, renal cortex, renal artery and vein, ureter and adrenal gland. With educational card and stand.  
Size: 16 x 10 x 5 cm, weight: 0.3 kg

## Kidney, Nephron and Glomerulus

**Price inquiry:** +48 605999769, [kontakt@openmedis.pl](mailto:kontakt@openmedis.pl)

Product code: MA08012



This 3 models set shows the basic structure of the kidney. We can find as a first model a frontal section of the kidney, enlarged 3 times, illustrates adrenal gland, cortex, medulla, pyramids with papillae, renal pelvis and blood vessels. The second model, representing a nephron enlarged 120 times, shows renal tubules, a collecting tube system and Henle's loop. The third one illustrates Malpighian corpuscle with the Bowman's capsule, 700 times life size. All these models are a great instrument to understand the kidney anatomy in all the inner details. The three models are mounted on board.

Size: 70 x 29 x 12 cm

Weight: 4.1 kg